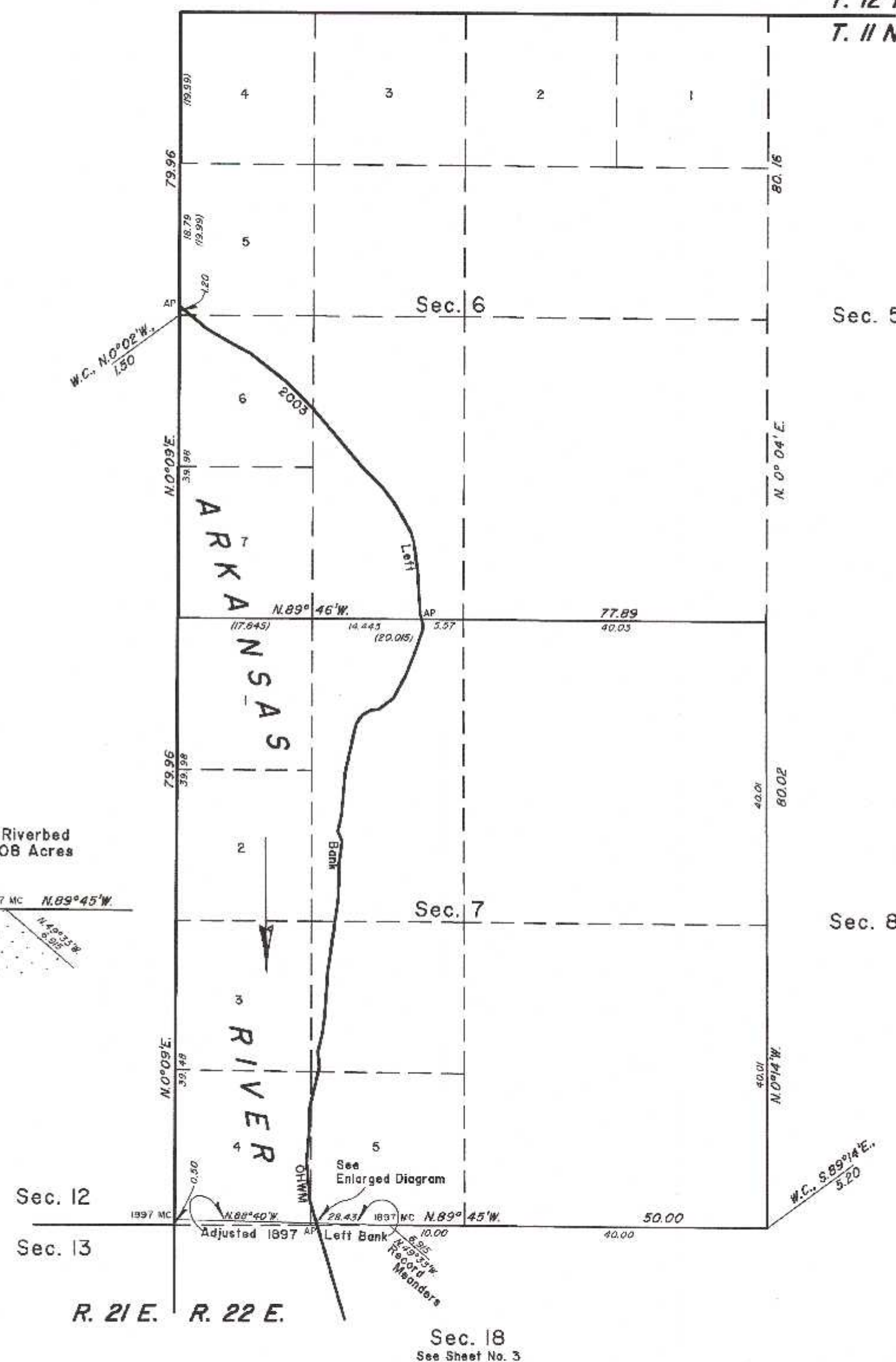


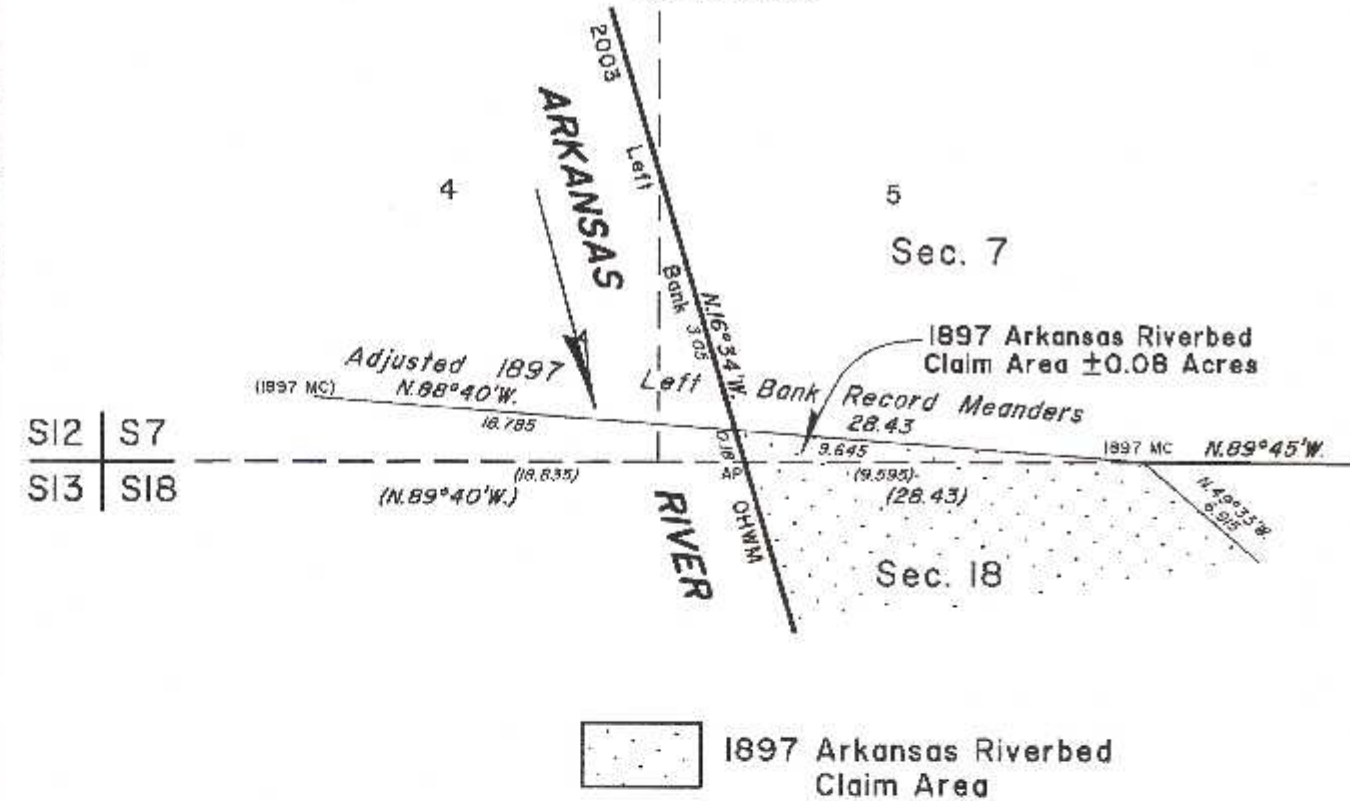
TOWNSHIP II NORTH, RANGE 22 EAST, OF THE INDIAN MERIDIAN, OKLAHOMA  
DEPENDENT RESURVEY AND SURVEY



T. 12 N.  
T. 11 N.



ENLARGED DIAGRAM  
(Not to Scale)



2003 Arkansas River  
in Section 6  
Left Bank OHWM as Digitized

From AP, sections 6 and 7,  
at 2003 Left Bank OHWM,  
thence upstream in section 6;

N.14°42'W.	0.68
N. 4°01'W.	5.83
N. 7°01'W.	2.33
N. 7°48'W.	1.48
N.17°10'W.	1.43
N.29°57'W.	4.26
N.37°31'W.	2.91
N.46°11'W.	3.28
N.40°19'W.	9.96
N.44°26'W.	5.22
N.5°46'W.	6.20
N.6°38'W.	3.08
N.60°29'W.	3.37
N.50°36'W.	4.95

AP sections 1 and 6

2003 Arkansas River  
in Section 7  
Left Bank OHWM as Digitized

From AP, sections 7 and 18,  
at 2003 Left Bank OHWM,  
thence upstream in section 7;

N.16°34'W.	0.18
Adj. 1897 L.B. Meander	
N.16°34'W.	3.05
N. 4°51'W.	5.13
N. 4°17'E.	3.87
N. 1°31'E.	3.36
N.13°23'E.	4.19
N.12°58'E.	1.29
N. 5°53'W.	2.09
N.14°12'E.	2.33
N. 8°30'E.	2.27
N. 3°32'E.	5.94
N. 8°01'E.	9.89
N. 1°09'E.	4.53
N. 7°36'E.	3.02
N.22°56'W.	1.42
N.11°25'E.	2.53
N. 4°40'E.	5.17
N.12°21'E.	6.74
N.34°51'E.	1.43
N.6°59'E.	1.22
N.80°53'E.	1.14
N.52°20'E.	2.39
N.28°44'E.	3.48
N.21°03'E.	3.65
N.19°07'E.	2.77
N. 4°00'E.	0.58
N.14°42'W.	0.78

AP sections 6 and 7

2003  
Arkansas Riverbed  
in Section 6  
Claim Area ± 89.18 Acres

2003  
Arkansas Riverbed  
in Section 7  
Claim Area ± 174.15 Acres  
1897 Arkansas Riverbed  
Claim Area ± 0.08 Acres

Reference should be made to sheet No. 1 for survey  
and disclaimer information.

UNITED STATES DEPARTMENT OF THE INTERIOR  
BUREAU OF LAND MANAGEMENT

Sante Fe, New Mexico July 22, 2011

This plat is strictly conformable to the approved  
field notes, and the survey, having been correctly  
executed in accordance with the requirements of  
law and the regulations of this Bureau, is hereby  
accepted.

For the Director

Chief Cadastral Surveyor for New Mexico

