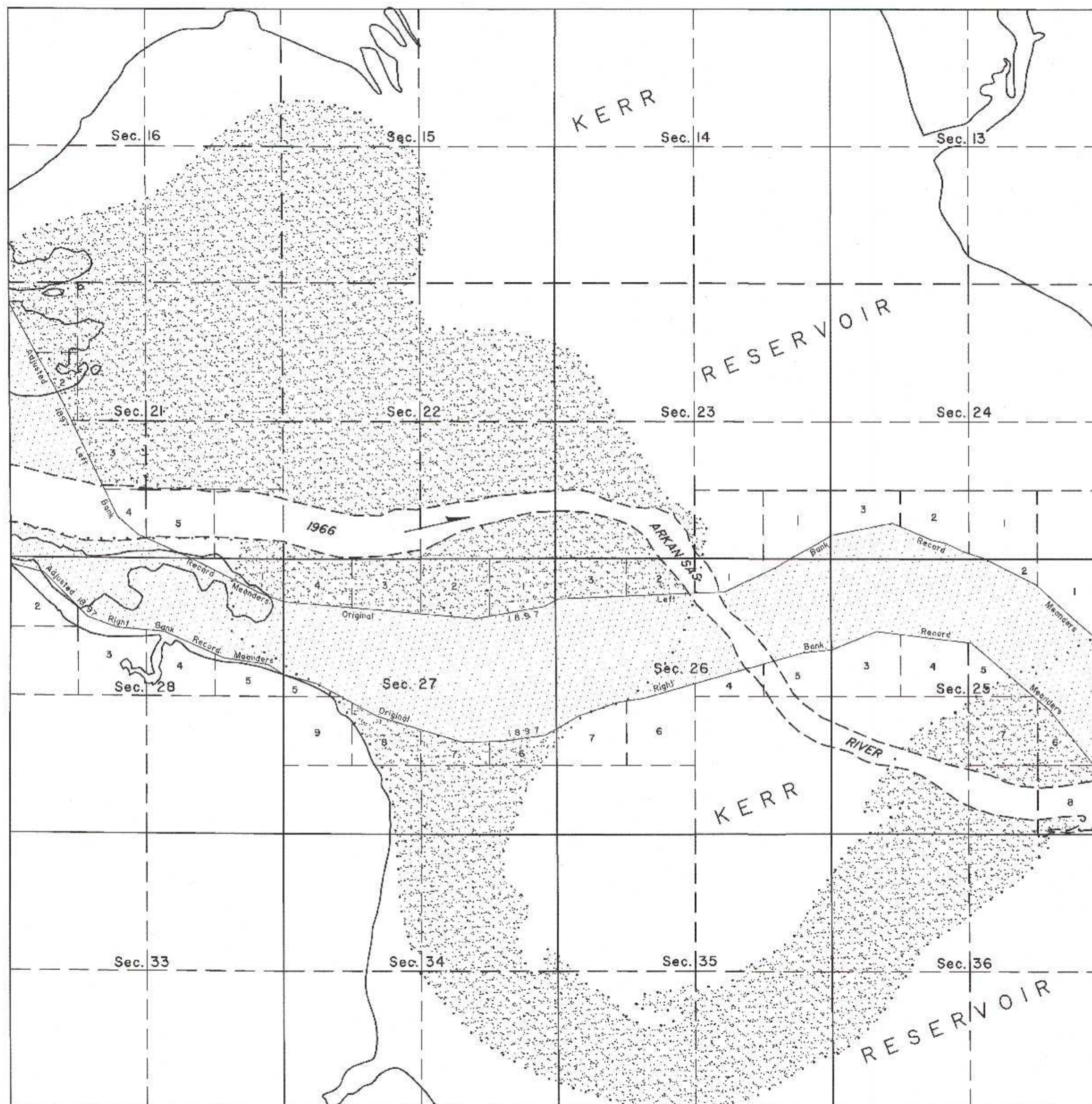


TOWNSHIP II NORTH, RANGE 22 EAST, OF THE INDIAN MERIDIAN, OKLAHOMA

KERR RESERVOIR CLAIM AREAS



1966 Arkansas Riverbed Claim Area

Section 21	±119.38 Acres
Section 22	±81.38 Acres
Section 23	±31.30 Acres
Section 25	±71.94 Acres
Section 26	±48.92 Acres

1897 Arkansas Riverbed Claim Area

Section 21	±95.34 Acres
Section 23	±4.22 Acres
Section 24	±29.33 Acres
Section 25	±221.83 Acres
Section 26	±212.17 Acres
Section 27	±254.12 Acres
Section 28	±140.42 Acres

Historic Riverbed Claim Area

Section 15	±199.97 Acres
Section 16	±234.20 Acres
Section 21	±411.18 Acres
Section 22	±500.37 Acres
Section 23	±124.24 Acres
Section 25	±157.61 Acres
Section 26	±39.23 Acres
Section 27	±248.81 Acres
Section 28	±13.35 Acres
Section 34	±212.59 Acres
Section 35	±281.60 Acres
Section 36	±205.17 Acres

Reference should be made to sheet No. 1 for survey information.

UNITED STATES DEPARTMENT OF THE INTERIOR
BUREAU OF LAND MANAGEMENT

Santa Fe, New Mexico July 22, 2011

This plat is strictly conformable to the approved field notes, and the survey, having been correctly executed in accordance with the requirements of law and the regulations of this Bureau, is hereby accepted.

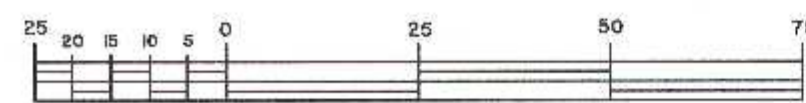
For the Director

John A. Casias

Chief Cadastral Surveyor for New Mexico



Boundary of Historic Riverbed (.....)
See Sheet No. 6 for Table of Historic Riverbed
See Sheet No. 7 for Table of 1966 Arkansas River



Scale in Chains