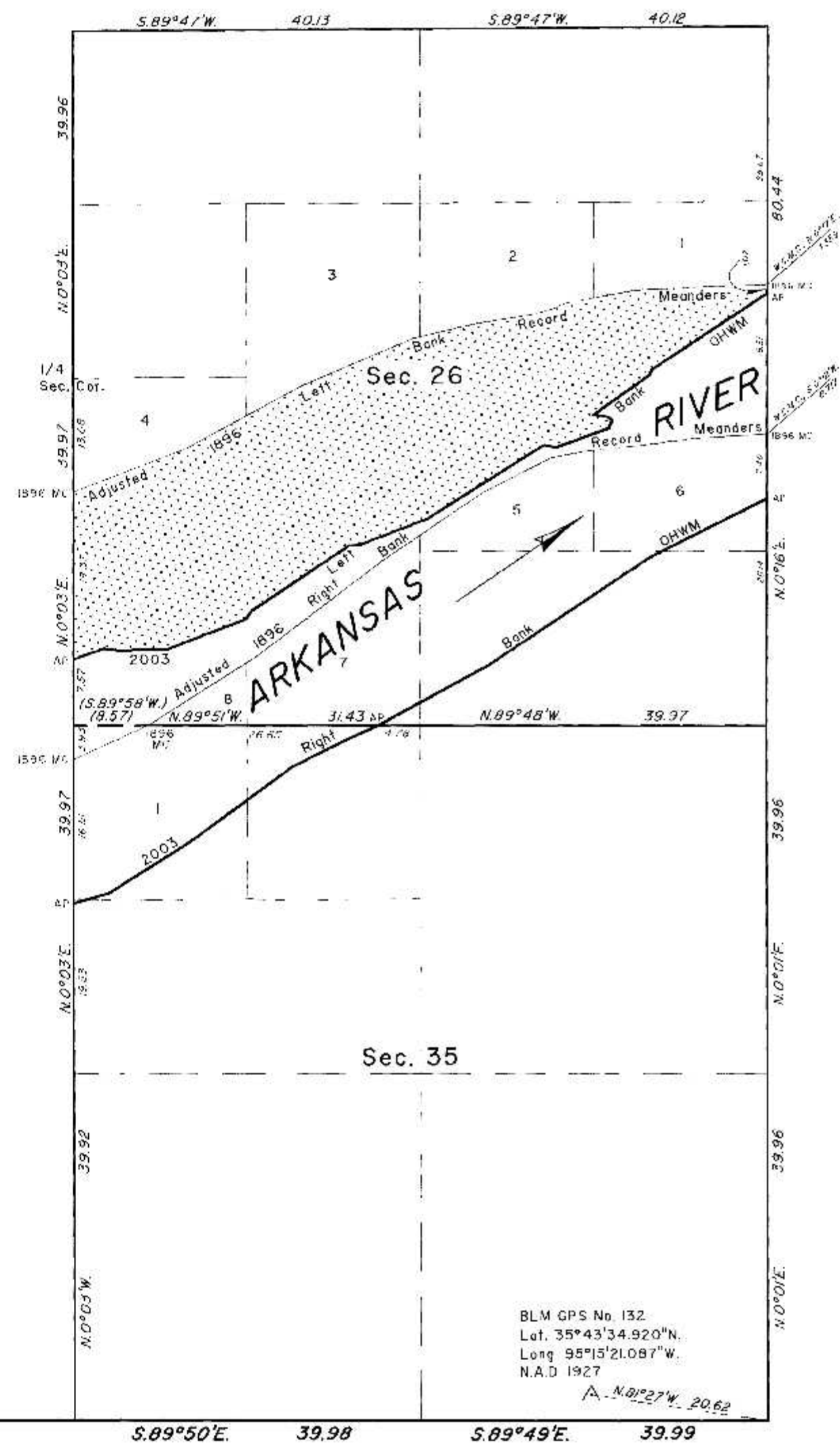


TOWNSHIP 15 NORTH, RANGE 19 EAST, OF THE INDIAN MERIDIAN, OKLAHOMA
DEPENDENT RESURVEY AND SURVEY

Sec. 22



Sec. 27
See Sheet No. 6

Sec. 25
See Sheet No. 8

Sec. 34
See Sheet No. 6

Sec. 36

T. 15 N.
T. 14 N.

BLM GPS No. 132
Lat. 35°43'34.920"N.
Long 95°15'21.087"W.
N.A.D. 1927
A. N. 01°27'W. 20.62

2003 Arkansas River
in Section 26
Left Bank OHWM as Digitized

From AP, sections 25 and 26,
at 2003 Left Bank OHWM,
thence upstream in section 26:

S.56°39'W.,	15.94
S.25°15'W.,	0.74
S.55°00'W.,	7.93
S.84°01'E.,	1.66
S.48°33'E.,	0.72
S.26°44'W.,	0.94
S.69°43'W.,	6.40
N.79°41'W.,	1.37
S.64°41'W.,	0.90
S.57°58'W.,	15.07
S.69°03'W.,	8.38
S.83°55'W.,	1.27
S.56°19'W.,	13.34
S.37°37'W.,	1.35
S.68°25'W.,	9.62
N.89°39'W.,	3.59
S.75°17'W.,	1.14
N.82°50'W.,	2.67
S.70°32'W.,	3.73
AP sections 26 and 27	

2003 Arkansas River
in Sections 26 and 35
Right Bank OHWM as Digitized

From AP, sections 25 and 26,
at 2003 Right Bank OHWM,
thence upstream in section 26:

S.63°42'W.,	15.01
S.66°19'W.,	22.47
S.6°36'W.,	14.45
AP sections 26 and 35	
S.66°11'W.,	4.65
S.63°30'W.,	6.39
S.53°57'W.,	14.72
S.57°46'W.,	11.03
S.74°39'W.,	4.19
AP sections 34 and 35	

Adjusted 1896
Left Bank
Record Meanders

From the 1896 MC,
sections 25 and 26 thence;

S.87°43'W.,	15.44
S.78°58'W.,	8.02
S.69°29'W.,	3.01
S.80°57'W.,	8.02
S.76°43'W.,	7.02
S.67°00'W.,	14.04
S.62°00'W.,	2.84
2003 Left Bank OHWM	
S.62°00'W.,	12.20
S.68°59'W.,	14.04
1896 MC Secs. 26 and 27	

Adjusted 1896
Right Bank
Record Meanders

From the 1896 MC,
sections 25 and 26 thence;

S.87°03'W.,	8.01
S.82°48'W.,	7.01
S.84°33'W.,	6.01
S.78°49'W.,	4.01
S.63°21'W.,	9.02
S.56°07'W.,	14.04
S.52°52'W.,	18.05
S.57°49'W.,	14.86
1896 MC Secs. 26 and 35	
S.65°22'W.,	9.43
1896 MC Secs. 34 and 35	

Reference should be made to sheet No. 1 for survey and disclaimer information.

Bearings and distances depicted in parenthesis on certain lines represent calculated data.

UNITED STATES DEPARTMENT OF THE INTERIOR
BUREAU OF LAND MANAGEMENT

Sante Fe, New Mexico December 19, 2012

This plat is strictly conformable to the approved field notes, and the survey, having been correctly executed in accordance with the requirements of law and the regulations of this Bureau, is hereby accepted.

2003 Arkansas Riverbed
in Section 26
Claim Area ± 140.86 Acres
1896 Arkansas Riverbed
Claim Area ± 136.88 Acres

2003 Arkansas Riverbed
in Section 35
Claim Area ± 36.44 Acres

For the Director

Chief Cadastral Surveyor for New Mexico

1896 Riverbed Claim Area

