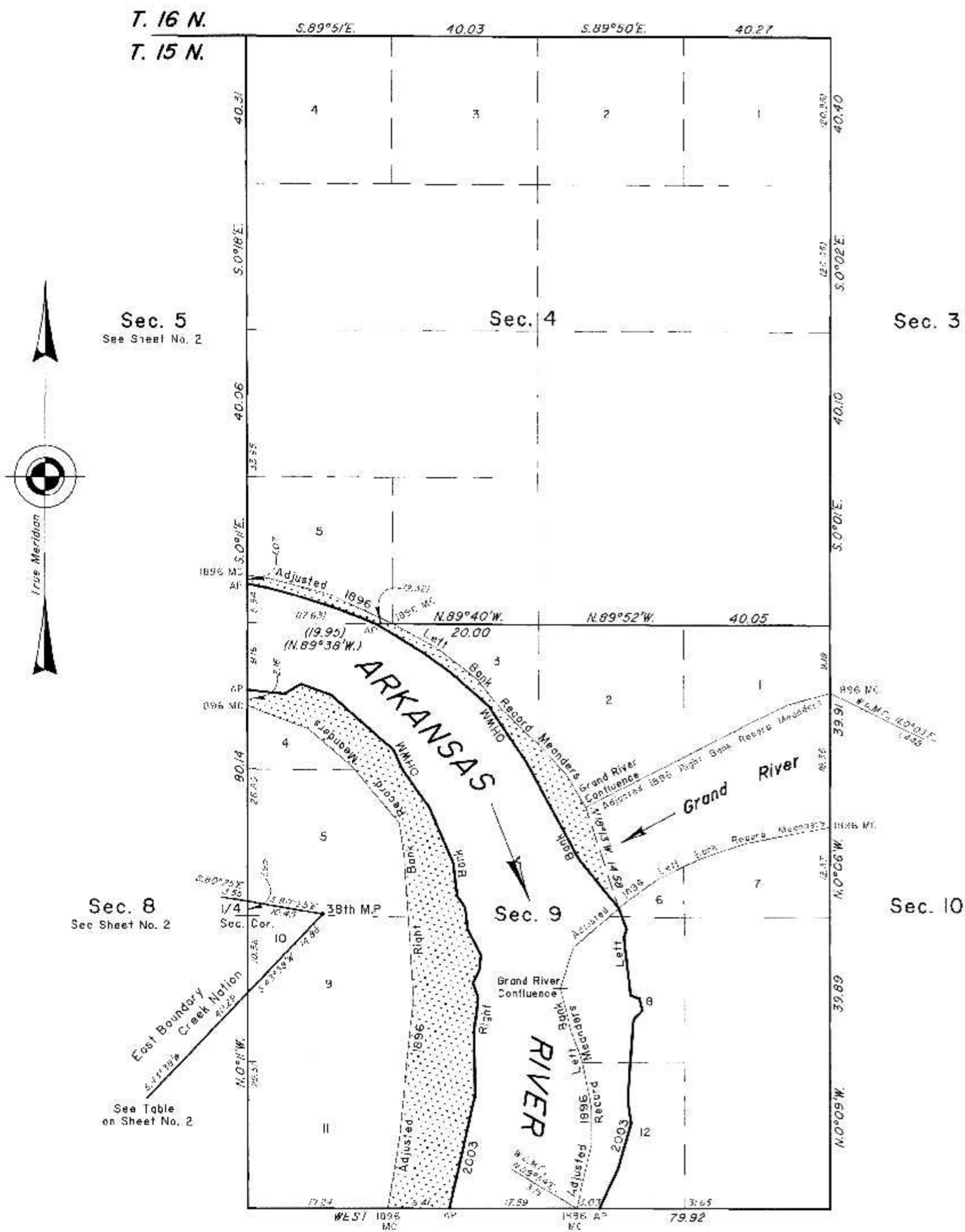


TOWNSHIP 15 NORTH, RANGE 19 EAST, OF THE INDIAN MERIDIAN, OKLAHOMA

DEPENDENT RESURVEY AND SURVEY



2003 Arkansas River in Sections 4 and 9 Left Bank OHWM as Digitized

From AP, sections 9 and 16, at 2003 Left Bank OHWM, thence upstream in section 9;

N.25°00'E.,	5.92
N.16°24'E.,	6.56
N. 8°25'W.,	3.42
N. 4°07'E.,	10.87
N.44°19'E.,	1.69
N.12°39'W.,	1.68
N.71°17'W.,	1.27
N. 7°01'W.,	8.02
N.17°46'E.,	1.21
N.20°24'W.,	3.06
Adj. 1896 Left Bank Meanders of Grand River	
N.39°12'W.,	8.76
N.28°34'W.,	14.87
N.34°09'W.,	9.23
N.48°39'W.,	7.02
N.53°34'W.,	4.57
N.58°47'W.,	7.83
AP sections 4 and 9	
N.68°46'W.,	5.33
N.72°19'W.,	6.77
N.75°17'W.,	3.36
N.78°28'W.,	3.04
AP sections 4 and 5	

2003 Arkansas River in Section 9 Right Bank OHWM as Digitized

From AP, sections 9 and 16, at 2003 Right Bank OHWM, thence upstream in section 9;

N.12°46'E.,	15.84
N. 0°55'W.,	8.75
N. 7°02'E.,	4.61
N.19°11'W.,	2.19
N.25°48'W.,	1.91
N. 6°47'E.,	2.13
N.27°49'W.,	3.92
N. 6°38'W.,	3.11
N.34°12'W.,	1.93
N. 6°37'W.,	4.37
N.23°24'W.,	8.51
N.36°11'W.,	6.17
N.25°07'W.,	3.02
N.48°44'W.,	11.35
N.69°46'W.,	4.47
S.59°43'W.,	2.64
N.83°36'W.,	5.11
AP sections 8 and 9	

Adjusted 1896 Left Bank Record Meanders Arkansas River

From the 1896 MC, sections 9 and 16 thence;

N.11°10'E.,	4.99
N.14°11'E.,	3.99
N. 0°07'W.,	4.99
N.1°53'W.,	6.99
N.20°54'W.,	3.99
N.14°09'W.,	5.99
Confluence with Grand River at Adjusted 1896 Left Bank Record Meanders of Arkansas River.	

Adjusted 1896 Right Bank Record Meanders Arkansas River

From the 1896 MC, sections 9 and 16 thence;

N. 9°23'E.,	10.01
N. 5°08'E.,	10.01
N. 5°53'E.,	9.01
N. 3°51'W.,	19.03
N. 8°36'W.,	5.01
N.39°46'W.,	10.02
N.49°30'W.,	8.02
N.69°27'W.,	8.94
1896 MC Secs. 8 and 9	

Adjusted 1896 Left Bank Record Meanders Arkansas River

From the confluence with Grand River at Adjusted 1896 Right Bank Record Meanders of the Arkansas River thence;

N.3°13'W.,	5.01
N.42°28'W.,	5.01
N.45°57'W.,	9.01
N.37°28'W.,	4.00
N.52°12'W.,	5.07
Historic Bank	
N.52°12'W.,	1.94
N.81°41'W.,	6.99
1896 MC Secs. 4 and 9	
N.64°46'W.,	7.91
Historic Bank	
N.64°46'W.,	1.22
N.75°06'W.,	9.14
N.84°13'W.,	2.89
1896 MC Secs. 4 and 5	

Adjusted 1896 Left Bank Record Meanders Grand River

From the confluence with Grand River at Adjusted 1896 Left Bank Record Meanders of the Arkansas River thence;

N.17°26'E.,	5.98
N.49°32'E.,	0.42
2003 Left Bank OHWM	
N.49°32'E.,	8.15
Historic Bank	
N.49°32'E.,	1.39
N.54°33'E.,	4.98
N.64°35'E.,	5.98
N.70°51'E.,	6.98
N.79°07'E.,	11.72
1896 MC Secs. 9 and 10	

Adjusted 1896 Right Bank Record Meanders Grand River

From the 1896 MC, sections 9 and 10 thence;

S.73°48'W.,	6.04
S.64°34'W.,	6.00
S.6°19'W.,	2.00
S.63°04'W.,	8.62
Historic Bank	
S.63°04'W.,	12.97
Historic Bank	
S.63°04'W.,	1.41
Confluence with Arkansas River at Adjusted 1896 Left Bank Record Meanders of Arkansas River	

Reference should be made to sheet No. 1 for survey and disclaimer information.

Bearings and distances depicted in parenthesis on certain lines represent calculated data.

UNITED STATES DEPARTMENT OF THE INTERIOR  
BUREAU OF LAND MANAGEMENT

Sante Fe, New Mexico December 19, 2012

This plat is strictly conformable to the approved field notes, and the survey, having been correctly executed in accordance with the requirements of law and the regulations of this Bureau, is hereby accepted.

For the Director

*John A. Casado*

Chief Cadastral Surveyor for New Mexico

2003 Arkansas Riverbed in Section 4

Claim Area ± 5.25 Acres  
1896 Arkansas Riverbed  
Claim Area ± 2.54 Acres

2003 Arkansas Riverbed in Section 9

Claim Area ± 164.94 Acres  
1896 Arkansas Riverbed  
Claim Area ± 70.42 Acres

 1896 Riverbed Claim Area

