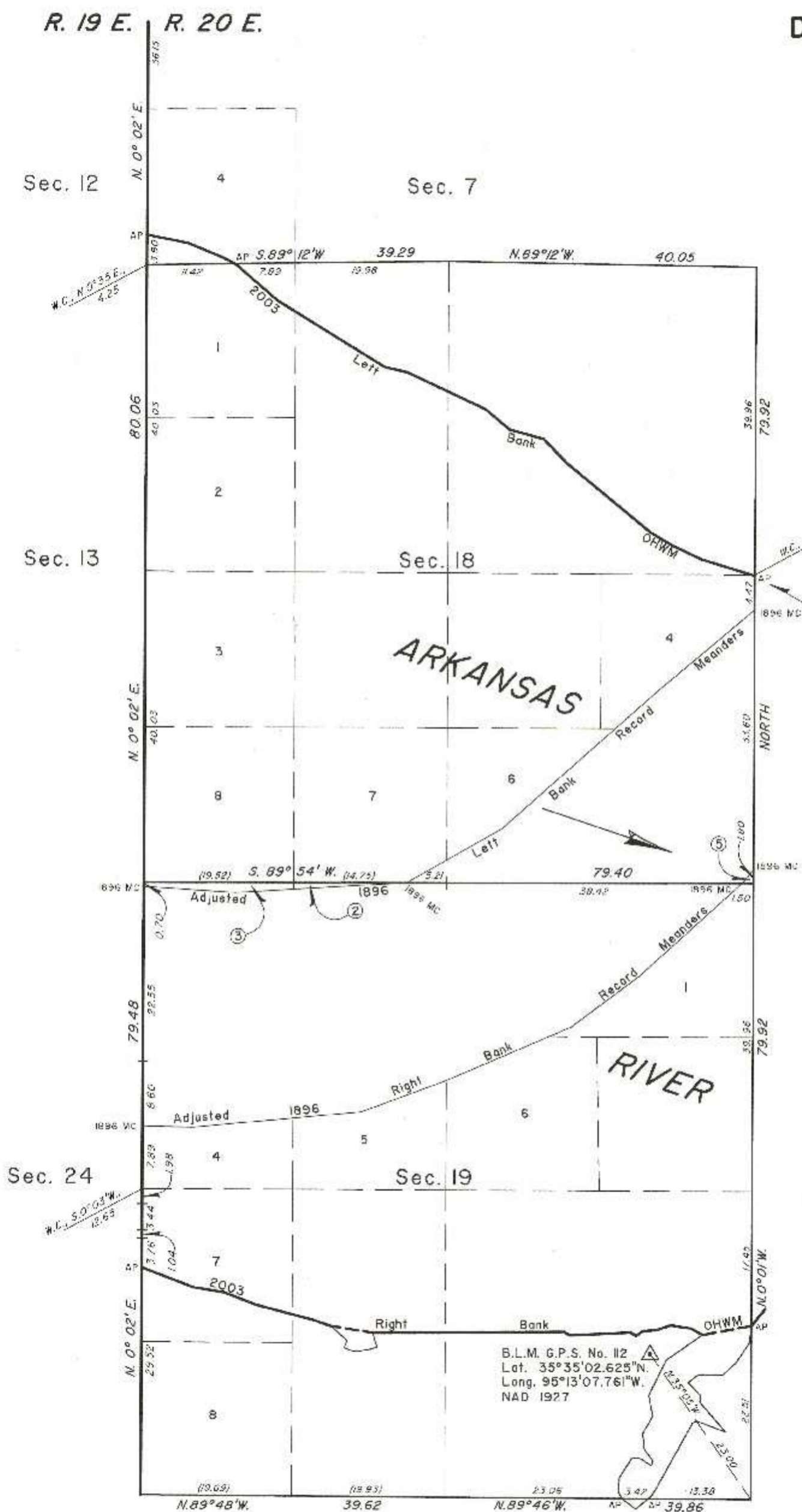


TOWNSHIP 13 NORTH, RANGE 20 EAST, OF THE INDIAN MERIDIAN, OKLAHOMA

DEPENDENT RESURVEY AND SURVEY



2003 Arkansas River in Sections 7 and 18 Left Bank OHWM as Digitized

From AP. sections 17 and 18, at 2003 Left Bank OHWM, thence upstream in section 18:

N.73°28'W.,	7.23
N.64°47'W.,	4.33
N.59°11'W.,	3.22
N.50°39'W.,	14.00
N.44°49'W.,	4.54
N.74°36'W.,	4.55
N.50°25'W.,	4.14
N.65°02'W.,	11.13
N.76°22'W.,	3.08
N.58°39'W.,	16.36
N.49°17'W.,	7.12
N.60°46'W.,	0.28
N.60°46'W.,	1.19
N.67°44'W.,	5.17
N.78°48'W.,	5.44

AP sections 7 and 12

2003 Arkansas River in Section 19 Right Bank OHWM as Digitized

From AP. sections 19 and 20, at 2003 Right Bank OHWM, thence upstream in section 19:

S.79°34'W.,	6.46
N.62°04'W.,	1.78
N.80°53'W.,	2.62
S.70°23'W.,	1.85
S.84°29'W.,	1.97
S.52°56'W.,	1.00
N.58°05'W.,	0.86
S.87°00'W.,	7.95
N.58°33'W.,	0.88
S.89°27'W.,	24.90
N.80°47'W.,	5.50
N.71°56'W.,	2.48
N.75°18'W.,	7.72
N.69°07'W.,	4.41
N.80°29'W.,	4.14
N.69°19'W.,	7.13

AP sections 19 and 24

Adjusted 1896 Right Bank Record Meanders

From the 1896 MC, sections 19 and 24 thence:

S.88°40'E.,	6.97
N.64°18'E.,	13.11
N.84°18'E.,	8.80
N.69°30'E.,	11.46
N.66°30'E.,	17.94
N.52°42'E.,	10.98
N.47°27'E.,	17.97
N.39°44'E.,	2.34

1896 MC Secs. 18 and 19
1896 MC Secs. 17 and 18

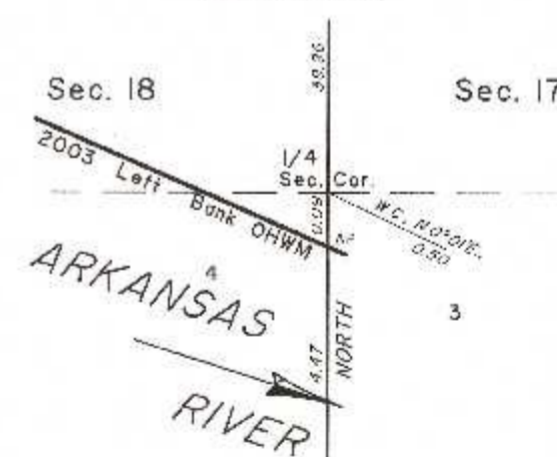
Adjusted 1896 Left Bank Record Meanders

From the 1896 MC, sections 19 and 24 thence:

S.86°42'E.,	11.97
N.86°17'E.,	22.37
N.60°37'E.,	14.06
N.48°26'E.,	27.13
N.49°55'E.,	16.44

1896 MC Secs. 17 and 18

ENLARGED DIAGRAM (Not to Scale)



Reference should be made to sheet No. 1 for survey and disclaimer information.

UNITED STATES DEPARTMENT OF THE INTERIOR
BUREAU OF LAND MANAGEMENT

Sante Fe, New Mexico December 14, 2011

This plat is strictly conformable to the approved field notes, and the survey, having been correctly executed in accordance with the requirements of law and the regulations of this Bureau, is hereby accepted.

For the Director

Chief Cadastral Surveyor for New Mexico

2003 Arkansas Riverbed in Section 7
Claim Area ±2.67 Acres

2003 Arkansas Riverbed in Section 18
Claim Area ±493.45 Acres

2003 Arkansas Riverbed in Section 19
Claim Area ±451.53 Acres

