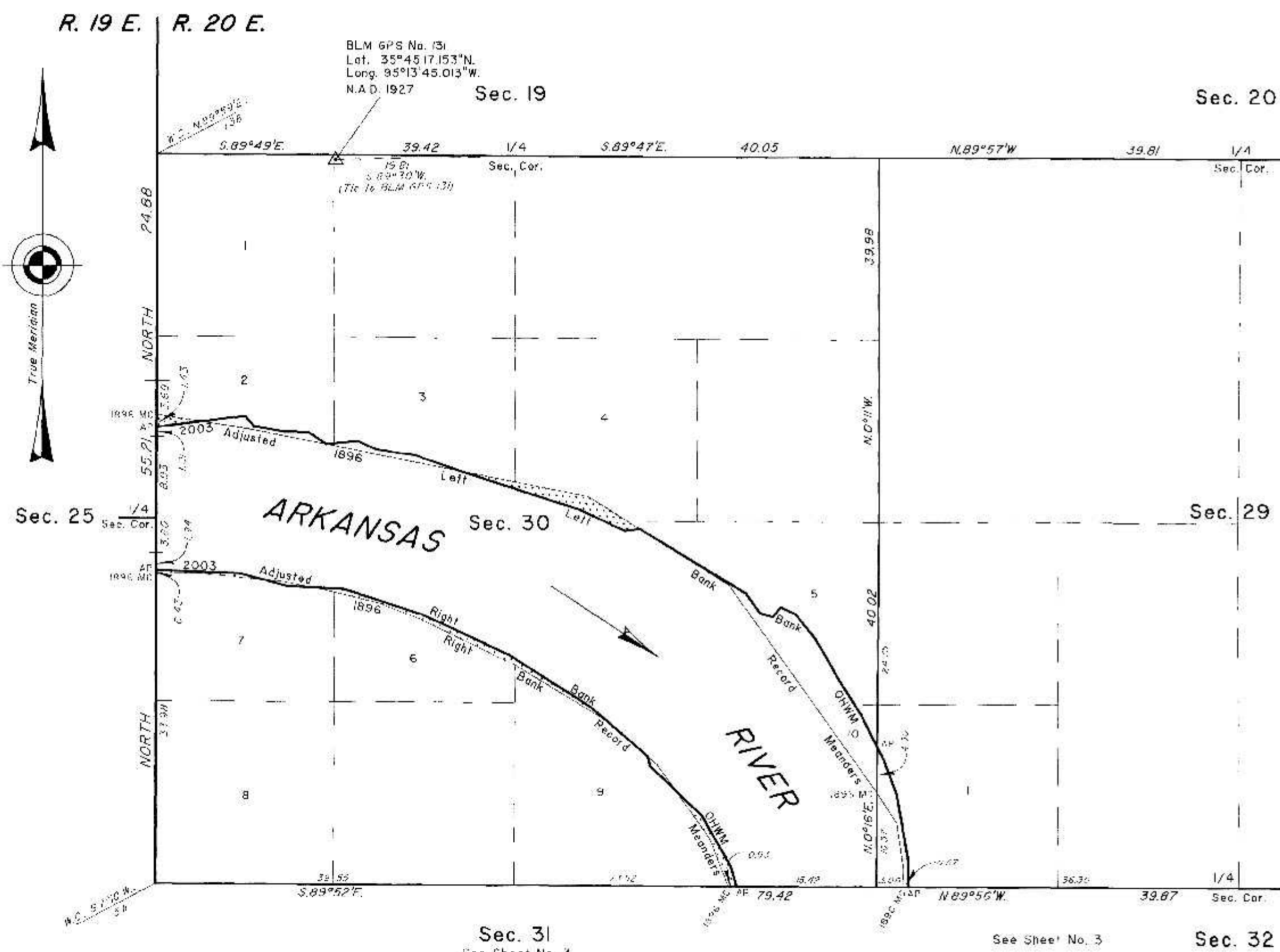


TOWNSHIP 15 NORTH, RANGE 20 EAST, OF THE INDIAN MERIDIAN, OKLAHOMA
DEPENDENT RESURVEY AND SURVEY



2003 Arkansas River in Sections 29 and 30 Left Bank OHWM as Digitized

From AP, sections 29 and 32, or 2003 Left Bank OHWM, thence upstream in section 29;

N.0°39'W.,	2.58
N.9°51'W.,	7.59
N.21°05'W.,	4.08
N.26°40'W.,	1.57
N.26°40'W.,	4.05
N.32°38'W.,	3.90
N.30°13'W.,	5.71
N.38°37'W.,	3.62
N.65°29'W.,	1.81
S.39°47'W.,	1.36
N.76°14'W.,	1.42
N.35°47'W.,	2.79
N.58°57'W.,	13.58
S.83°14'W.,	1.67
N.65°03'W.,	5.41
N.72°14'W.,	13.88
Adj. 1896 L.B. Meander	
N.7°14'W.,	5.26
N.8°50'W.,	4.32
N.65°57'W.,	2.21
S.85°09'W.,	3.56
N.56°29'W.,	2.46
S.89°34'W.,	2.58
N.79°15'W.,	3.40
N.40°22'W.,	1.44
S.82°42'W.,	4.77
Adj. 1896 L.B. Meander	
S.82°42'W.,	5.08
AP Sections 25 and 30	

2003 Arkansas River in Section 30 Right Bank OHWM as Digitized

From AP, sections 30 and 31, at 2003 Right Bank OHWM, thence upstream in section 30;

N.16°03'W.,	2.29
N.29°53'W.,	6.38
N.46°29'W.,	5.95
Adj. 1896 R.B. Meander	
N.46°29'W.,	3.95
N.13°19'W.,	1.07
Adj. 1896 R.B. Meander	
N.49°18'W.,	8.30
N.57°40'W.,	10.53
N.65°04'W.,	10.41
N.71°59'W.,	9.34
N.86°56'W.,	3.55
Adj. 1896 R.B. Meander	
N.86°56'W.,	2.69
N.75°25'W.,	2.93
Adj. 1896 R.B. Meander	
N.75°25'W.,	2.57
N.88°07'W.,	9.15
AP Sections 25 and 30	

Adjusted 1896 Left Bank Record Meanders

From the 1896 MC, sections 29 and 32 thence;	
N.1°39'W.,	2.44
N.8°39'W.,	4.60
N.32°56'W.,	4.03
1896 MC Secs. 29 and 30	
N.35°45'W.,	6.44
Historic Bank	
N.35°45'W.,	7.33
Historic Bank	
N.36°45'W.,	14.25
N.57°58'W.,	11.58
2003 Left Bank OHWM	
N.57°58'W.,	6.71
N.78°55'W.,	14.36
2003 Left Bank OHWM	
N.78°55'W.,	23.77
N.0°09'W.,	0.21
Historic Bank	
N.8°09'W.,	3.21
Historic Bank	
N.8°09'W.,	1.78
2003 Left Bank OHWM	
N.8°09'W.,	5.09
1896 MC Secs. 25 and 30, W. Bdy. of Tp.	

Adjusted 1896 Right Bank Record Meanders

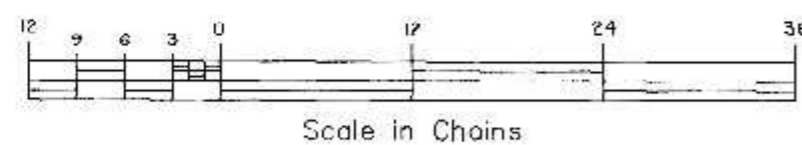
From the 1896 MC, sections 30 and 31 thence;	
N.2°05'W.,	5.66
N.35°42'W.,	6.36
2003 Right Bank OHWM	
N.35°42'W.,	3.55
N.49°50'W.,	1.56
2003 Right Bank OHWM	
N.58°55'W.,	10.89
N.64°13'W.,	11.80
N.69°01'W.,	4.95
N.76°20'W.,	5.94
N.78°52'W.,	1.66
2003 Right Bank OHWM	
N.78°52'W.,	3.29
N.83°25'W.,	1.56
N.84°55'W.,	0.72
2003 Right Bank OHWM	
N.84°55'W.,	7.20
S.89°47'W.,	1.98
S.87°30'W.,	2.48
1896 MC Secs. 25 and 30, W. Bdy. of Tp.	

2003 Arkansas Riverbed in Section 29
Claim Area ± 3.66 Acres

2003 Arkansas Riverbed in Section 30
Claim Area ± 165.41 Acres

1896 Arkansas Riverbed
Claim Area ± 5.13 Acres

1896 Riverbed Claim Area



Reference should be made to sheet No. 1 for survey and disclaimer information.

UNITED STATES DEPARTMENT OF THE INTERIOR
BUREAU OF LAND MANAGEMENT

Sante Fe, New Mexico September 28, 2012

This plat is strictly conformable to the approved field notes, and the survey, having been correctly executed in accordance with the requirements of law and the regulations of this Bureau, is hereby accepted.

For the Director

Robert A. Casan

Chief Cadastral Surveyor for New Mexico