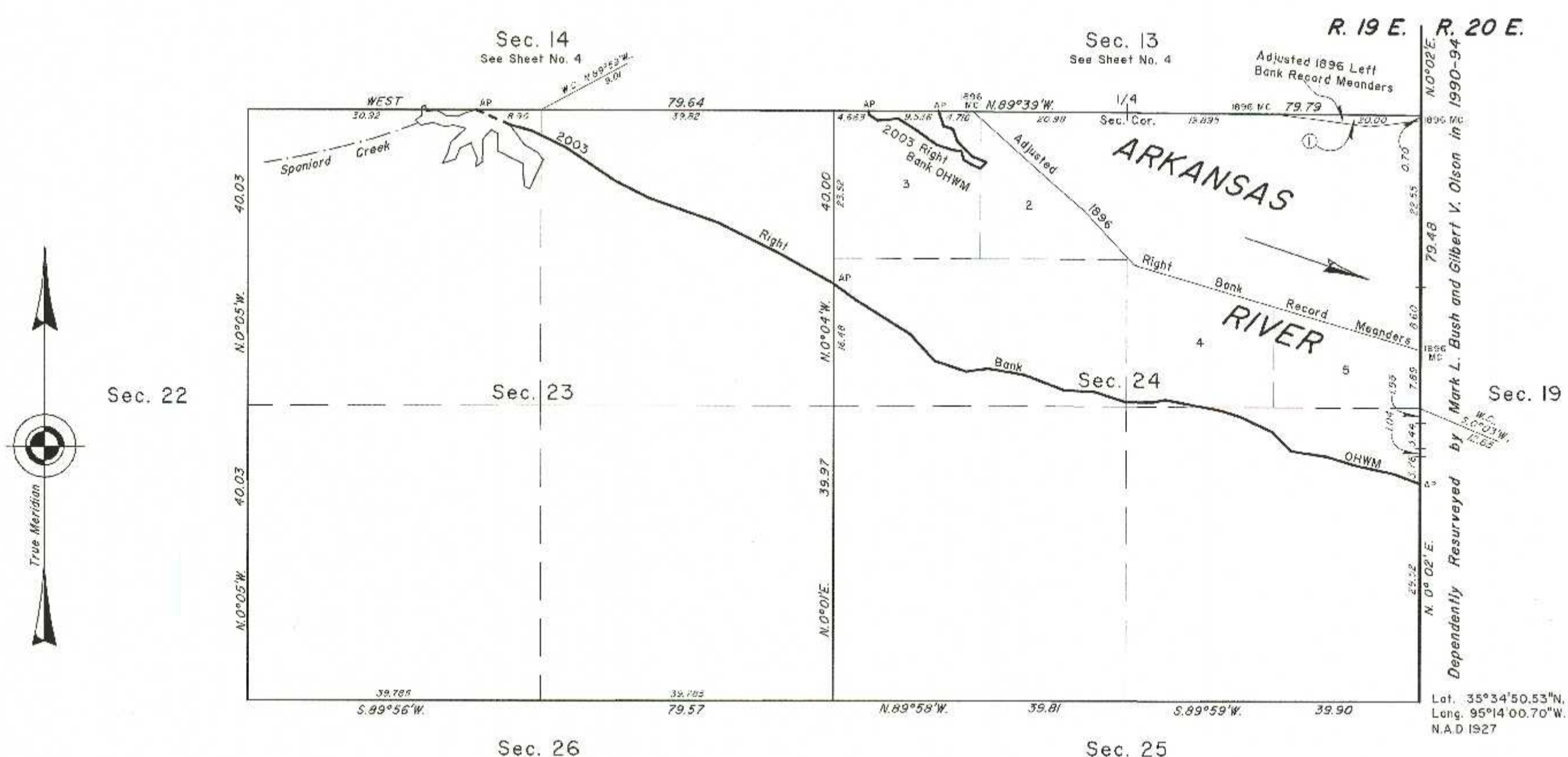


TOWNSHIP 13 NORTH, RANGE 19 EAST, OF THE INDIAN MERIDIAN, OKLAHOMA  
DEPENDENT RESURVEY AND SURVEY

Adjusted 1896 Right Bank Record Meanders	Adjusted 1896 Left Bank Record Meanders
From the 1896 MC, sections 19 and 24 thence;	From the 1896 MC, sections 19 and 24 thence;
N.73°36'W. 37.75	S.83°04'W. 7.00
Historic Bank	N.82°42'W. 10.20
N.73°36'W. 2.77	Historic Bank
N.42°59'W. 10.10	N.82°42'W. 2.95
N.48°56'W. 6.06	1896 MC Secs. 3 and 24
N.48°06'W. 14.15	
1896 MC Secs. 13 and 24	

2003 Arkansas River in Section 24 Right Bank OHWM as Digitized	2003 Arkansas River in Section 24 Right Bank OHWM as Digitized
From AP, sections 19 and 24, at 2003 Right Bank OHWM, thence upstream in section 24;	From AP, sections 13 and 24, at 2003 Right Bank OHWM, thence upstream in section 24;
N.69°19'W. 3.87	S. 8°28'E. 0.55
N.78°06'W. 5.07	S.55°35'E. 1.44
N.73°28'W. 4.34	N.84°25'E. 2.82
N.81°18'W. 4.89	S.57°37'E. 2.83
N.44°11'W. 3.57	S.54°27'E. 3.50
N.64°44'W. 4.81	S.72°13'E. 2.17
N.72°42'W. 2.80	S.81°14'E. 1.29
N.79°13'W. 7.72	S.18°14'E. 1.26
S.79°09'W. 1.59	S.59°5'E. 1.37
S.89°42'W. 3.72	S.66°52'E. 1.13
N.72°05'W. 4.55	N.43°11'E. 1.6
N.87°04'W. 4.06	N.68°51'W. 1.99
N.69°26'W. 5.86	N.44°55'W. 2.98
N.79°43'W. 4.95	N.19°51'W. 1.77
S.81°43'W. 3.07	N.74°12'W. 1.27
N.70°49'W. 4.54	N.19°34'W. 2.21
N.42°34'W. 4.84	AP sections 13 and 24
N.58°03'W. 8.71	
N.54°14'W. 3.76	
AP sections 23 and 24	

2003 Arkansas River in Section 23 Right Bank OHWM as Digitized
From AP, sections 23 and 24, at 2003 Right Bank OHWM, thence upstream in section 23;
N.54°14'W. 0.18
N.61°02'W. 8.27
N.63°30'W. 9.26
N.70°42'W. 10.09
N.62°52'W. 5.1
N.56°00'W. 8.13
N.64°06'W. 5.18
N.75°04'W. 3.05
N.66°31'W. 5.08
AP sections 14 and 23



Lat. 35°34'50.53"N,  
Long. 95°14'00.70"W,  
N.A.D 1927

Reference should be made to sheet No. 1 for survey and disclaimer information.

UNITED STATES DEPARTMENT OF THE INTERIOR  
BUREAU OF LAND MANAGEMENT

Sante Fe, New Mexico April 20, 2012

This plat is strictly conformable to the approved field notes, and the survey, having been correctly executed in accordance with the requirements of law and the regulations of this Bureau, is hereby accepted.

For the Director

*Robert A. Casan*

Chief Cadastral Surveyor for New Mexico

2003 Arkansas Riverbed in Section 23  
Claim Area ±56.02 Acres

2003 Arkansas Riverbed in Section 24  
Claim Area ±304.93 Acres

