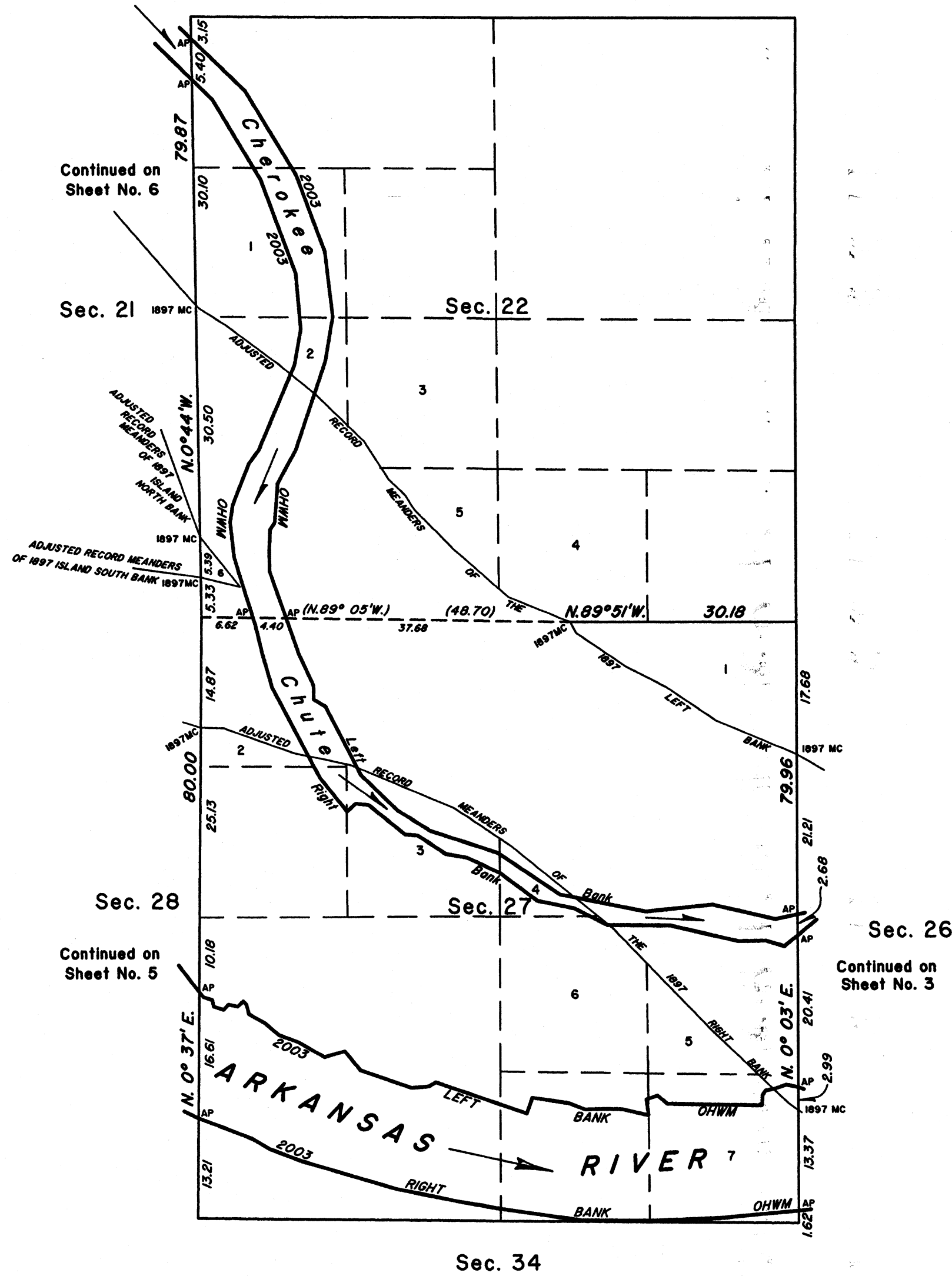


TOWNSHIP 10 NORTH, RANGE 26 EAST, OF THE INDIAN MERIDIAN, OKLAHOMA
SUPPLEMENTAL PLAT

2003
Arkansas Riverbed
in Section 27

From AP, sections 26 and 27,
at 2003 Left Bank OHWM,
thence upstream in section 27:

- N.69°39'W., 0.20
- N.78°20'W., 1.61
- S.71°25'W., 1.79
- S.78°43'W., 1.11
- S.34°01'W., 0.67
- S. 3°55'W., 1.41
- N.88°47'W., 2.44
- N.88°47'W., 10.13
- N.49°57'W., 1.71
- S.70°41'W., 1.29
- S.70°41'W., 0.29
- S. 7°54'E., 2.13
- N.76°33'W., 3.51
- N.88°32'W., 2.19
- S.88°37'W., 2.81
- N.68°45'W., 2.33
- N.81°09'W., 4.91
- S.19°16'W., 2.21
- N.70°59'W., 3.69
- N.70°59'W., 9.06
- S.59°22'W., 1.06
- S.85°33'W., 2.29
- N.70°57'W., 6.15
- N.70°50'W., 1.04
- N.39°08'W., 3.28
- S.74°01'W., 2.79
- N.59°57'W., 4.05
- N.69°28'W., 2.66
- N.49°37'W., 2.44
- N.59°57'W., 2.47
- N.13°29'W., 1.33
- N.47°44'W., 0.58
- S.48°16'W., 1.03
- N.76°07'W., 1.24
- S.40°17'W., 0.98
- N.70°17'W., 1.42
- N. 9°46'W., 0.85
- N.71°42'W., 1.28
- N.37°30'W., 0.46
- AP, sections 27 and 28,
S. 0°37'W., 16.61
- AP, sections 27 and 28 at
2003 Right Bank OHWM,
thence downstream:
- S.68°55'E., 7.41
- S.59°08'E., 2.60
- S.68°48'E., 4.38
- S.73°14'E., 9.41
- S.73°16'E., 3.90
- S.78°19'E., 9.25
- S.80°51'E., 4.81
- S.81°39'E., 10.82
- S.89°40'E., 9.08
- N.88°09'E., 9.26
- N.84°52'E., 10.59
- N.84°52'E., 0.17
- AP, sections 26 and 27,
N. 0°03'E., 16.36
- AP, sections 26 and 27, at
2003 Left Bank OHWM,
place of beginning, containing
± 120.72 Acres
Claim Area



2003 Cherokee Chute
of Arkansas River
in Section 27

From AP, sections 26 and 27,
at 2003 OHWM Right Bank
Cherokee Chute, thence
upstream in section 27:

- S.51°04'W., 2.44
- N.73°47'W., 2.57
- S.89°07'W., 3.59
- N.76°51'W., 9.35
- N.89°35'W., 8.32
- N.63°20'W., 4.90
- N.77°39'W., 3.30
- N.78°22'W., 1.74
- N.53°19'W., 6.20
- N.65°20'W., 4.82
- N.79°54'W., 2.83
- N.56°37'W., 4.41
- N.84°33'W., 1.71
- N.50°52'W., 6.17
- N.82°59'W., 1.72
- S.48°52'W., 1.57
- N.38°36'W., 5.76
- N.27°28'W., 13.52
- N.15°44'W., 4.73
- N.13°26'W., 3.86
- N.16°55'W., 1.12
- AP, sections 22 and 27,
S.89°05'E., 4.40
- AP, sections 22 and 27, at 2003
OHWM Left Bank Cherokee Chute,
thence downstream:
- S.19°00'E., 4.99
- S.24°24'E., 4.74
- S. 0°54'E., 1.89
- S.58°53'E., 1.78
- S.26°59'E., 10.31
- S.45°54'E., 6.68
- S.57°47'E., 5.19
- S.72°05'E., 9.38
- S.55°59'E., 9.91
- S.78°40'E., 11.60
- N.84°15'E., 8.91
- S.76°51'E., 8.57
- N.78°20'E., 3.15
- AP, sections 26 and 27,
S. 0°03'W., 2.68
- AP, sections 26 and 27, at
2003 OHWM Right Bank
Cherokee Chute, place of
beginning, containing
± 27.86 Acres
Claim Area

2003 Cherokee Chute
of Arkansas River
in Section 22

From AP, sections 22 and 27,
at 2003 OHWM Right Bank
Cherokee Chute, thence
upstream in section 22:

- N.16°55'W., 8.49
- N. 6°03'W., 4.63
- N. 8°50'E., 0.73
- N. 8°50'E., 1.62
- N.21°45'E., 5.87
- N.36°45'E., 2.21
- N.22°52'E., 12.33
- N.10°02'E., 4.77
- N. 4°45'W., 7.52
- N.20°06'W., 13.39
- N.30°51'W., 12.32
- N.45°43'W., 3.51
- AP, sections 21 and 22,
N. 0°44'W., 5.40
- AP, sections 21 and 22, at 2003
OHWM Left Bank Cherokee Chute,
thence downstream:
- S.45°52'E., 9.62
- S.31°08'E., 12.95
- S.20°03'E., 11.00
- S. 6°29'E., 8.77
- S. 9°35'W., 6.02
- S.18°34'W., 12.50
- S.28°53'W., 4.97
- S. 4°54'W., 5.22
- S.34°07'W., 1.08
- S. 2°26'W., 2.84
- S. 0°52'E., 2.76
- S.19°00'E., 6.61
- AP, sections 22 and 27,
N.89°05'W., 4.40
- AP, sections 22 and 27, at
2003 OHWM Right Bank
Cherokee Chute, place of
beginning, containing
± 35.20 Acres
Claim Area

Reference should be made to sheet No. 1 for survey information.

UNITED STATES DEPARTMENT OF THE INTERIOR
BUREAU OF LAND MANAGEMENT

Santa Fe, New Mexico October 2, 2008

This plat, showing amended boundaries and areas is based upon the official records and, having been correctly prepared in accordance with the regulations of this Bureau is hereby accepted.

For the Director

Mark A. Casias

Chief Cadastral Surveyor for New Mexico