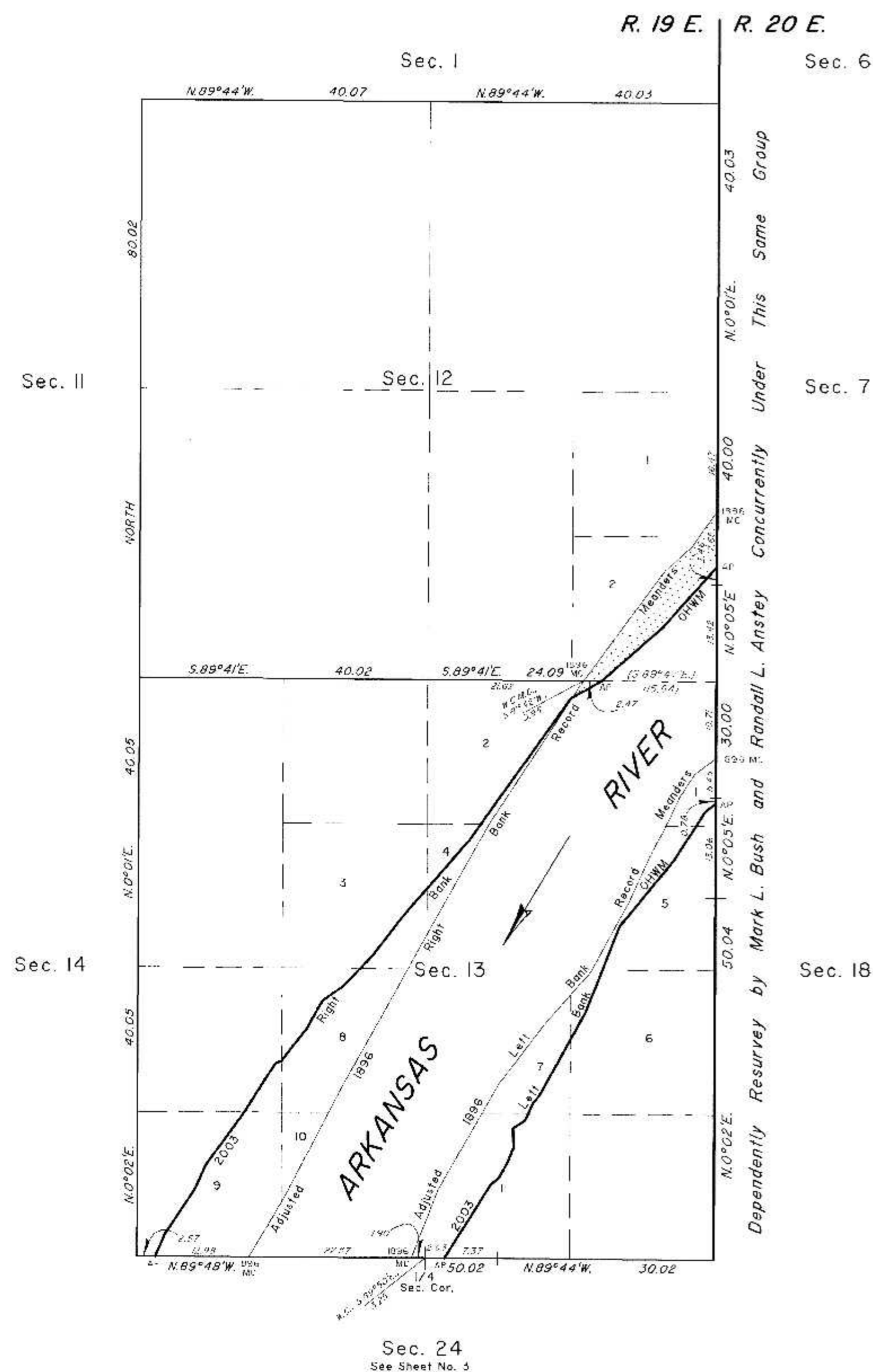


TOWNSHIP 14 NORTH, RANGE 19 EAST, OF THE INDIAN MERIDIAN, OKLAHOMA

DEPENDENT RESURVEY AND SURVEY



Dependently Resurveyed by Mark L. Bush and Randall L. Anstey Concurrently Under This Same Group

2003 Arkansas River in Section 13 Left Bank OHWM as Digitized	2003 Arkansas River in Sections 12 and 13 Right Bank OHWM as Digitized	Adjusted 1896 Left Bank Record Meanders	Adjusted 1896 Right Bank Record Meanders
From AP, sections 13 and 24, at 2003 Left Bank OHWM, thence upstream in section 13;	From AP, sections 13 and 24, at 2003 Right Bank OHWM, thence upstream in section 13;	From the 1896 MC, sections 13 and 24 thence;	From the 1896 MC, sections 13 and 24 thence;
N.32°06'E.. 12.03	N.23°26'E.. 3.38	N.2°01'E.. 10.01	N.3°05'E.. 4.30
N.53°13'E.. 1.40	N.33°14'E.. 7.66	N.29°45'E.. 17.02	N.29°50'E.. 6.00
N.28°20'E.. 2.84	N.24°14'E.. 3.43	N.37°15'E.. 10.01	N.27°35'E.. 17.99
N.22°15'E.. 1.91	N.36°02'E.. 9.08	N.4°14'E.. 10.01	N.29°20'E.. 10.00
N. 2°09'W.. 2.70	N.32°20'E.. 8.06	N.28°30'E.. 8.00	N.28°50'E.. 17.00
N.56°13'E.. 1.93	N.75°49'E.. 0.78	Historic Bank	N.29°20'E.. 7.86
N.25°57'E.. 2.71	N.35°53'E.. 1.40	N.28°30'E.. 3.02	Historic Bank
N.39°52'E.. 1.41	N.38°45'E.. 4.38	N.24°46'E.. 7.01	N.29°20'E.. 5.14
N.28°48'E.. 12.95	N.29°04'E.. 4.44	N.27°15'E.. 6.01	N.33°05'E.. 14.00
N.21°35'E.. 12.95	N.54°24'E.. 3.39	N.25°15'E.. 3.00	N.33°20'E.. 7.16
N.39°25'E.. 11.73	N.44°02'E.. 6.01	N.32°45'E.. 4.00	2003 Right Bank OHWM
N.32°22'E.. 7.96	N.37°40'E.. 7.43	N.54°29'E.. 3.55	N.33°20'E.. 2.84
N.52°17'E.. 1.93	N.4°11'E.. 13.23	1896 MC Secs. 13 and 18, E. Bdy. of Tp.	1896 MC Secs. 12 and 13
AP sections 13 and 18, E. Bdy. of Tp.	N.35°25'E.. 24.21		N.36°26'E.. 19.09
	N.59°41'E.. 0.31		N.48°38'E.. 5.02
	Adj. 1896 R. B. Meanders		N.33°27'E.. 3.01
	N.59°41'E.. 4.67		N.36°56'E.. 2.82
	AP sections 12 and 3		896 MC Secs. 7 and 12, c. Bdy. of Tp.
	N.48°52'E.. 11.12		
	N.42°32'E.. 1.07		
	N.4°18'E.. 3.62		
	N.4°52'E.. 6.72		
	AP sections 7 and 12, E. Bdy. of Tp.		

Bearings and distances depicted in parenthesis on certain lines represent calculated data.

Reference should be made to sheet No. 1 for survey and disclaimer information.

UNITED STATES DEPARTMENT OF THE INTERIOR
BUREAU OF LAND MANAGEMENT

Sante Fe, New Mexico September 11, 2012

This plat is strictly conformable to the approved field notes, and the survey, having been correctly executed in accordance with the requirements of law and the regulations of this Bureau, is hereby accepted.

2003 Arkansas Riverbed in Section 12 Claim Area ± 11.88 Acres	2003 Arkansas Riverbed in Section 13 Claim Area ± 268.66 Acres
1896 Arkansas Riverbed Claim Area ± 10.34 Acres	1896 Arkansas Riverbed Claim Area ± 0.29 Acres

1896 Riverbed Claim Area

For the Director

John A. Casian

Chief Cadastral Surveyor for New Mexico

