

TOWNSHIP 10 NORTH, RANGE 24 EAST, OF THE INDIAN MERIDIAN, OKLAHOMA  
DEPENDENT RESURVEY AND SURVEY

2003 Arkansas River  
in Section 10  
Left Bank OHWM as Digitized

From AP, sections 10 and 11, at  
2003 Left Bank OHWM,  
thence upstream in section 10;

N.63°39'W.	1.62
Bdy. Historic Riverbed	
N.63°39'W.	4.53
N.86°56'W.	7.43
S.63°44'W.	1.70
N.74°23'W.	5.85
N.77°55'W.	8.37
S.84°20'W.	3.59
N.83°47'W.	3.22
N.75°10'W.	3.01
N.68°35'W.	2.38
N.70°45'W.	2.98
S.75°55'W.	7.56
S.31°22'W.	1.83
S.84°35'W.	9.09
S.79°48'W.	8.62
S.76°48'W.	8.41
S.72°47'W.	3.63
AP sections 9 and 10	

2003 Arkansas River  
in Section 10  
Right Bank OHWM as Digitized

AP, sections 10 and 11, at  
2003 Right Bank OHWM,  
thence upstream in section 10;

N.73°34'W.	3.50
N.84°30'W.	4.36
N.79°52'W.	5.99
N.82°24'W.	7.94
N.84°05'W.	13.30
N.87°57'W.	5.60
S.74°39'W.	1.86
S.79°30'W.	7.75
S.78°05'W.	10.78
S.77°19'W.	9.11
S.76°08'W.	9.75
S.68°49'W.	1.95
AP sections 9 and 10	

2003 Arkansas River  
in Section 11  
Left Bank OHWM as Digitized

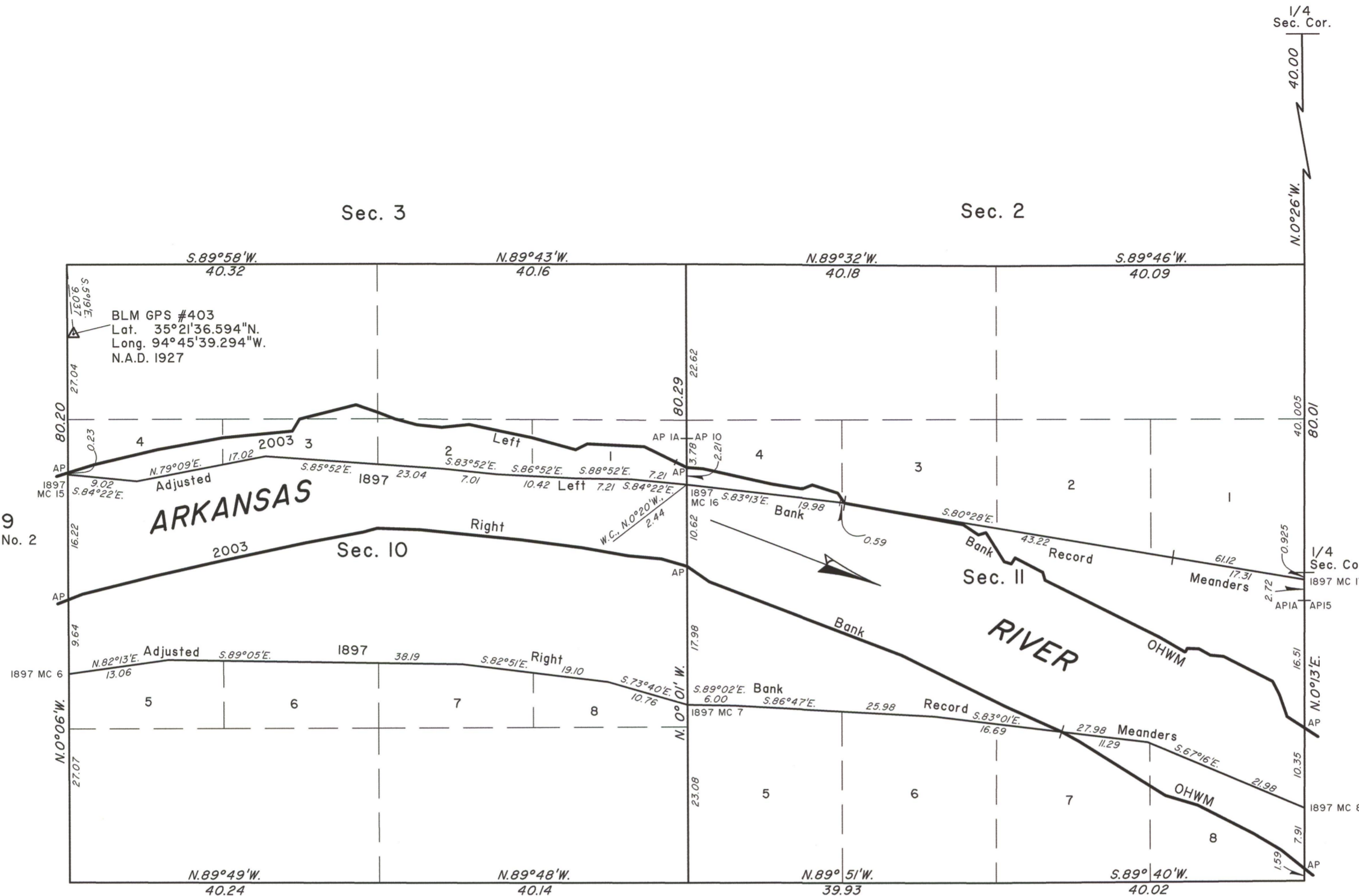
From AP, sections 11 and 12,  
at 2003 Left Bank OHWM,  
thence upstream in section 11;

N.56°50'W.	2.68
N.19°02'W.	2.97
N.26°43'W.	1.97
N.63°01'W.	7.15
N.84°25'W.	1.72
N.60°25'W.	1.68
N.87°52'W.	1.53
S.28°35'W.	0.56
N.59°32'W.	3.08
N.60°11'W.	0.90
N.63°29'W.	16.48
N.16°04'W.	1.06
N.62°26'W.	4.04
S.32°14'W.	0.91
N.73°00'W.	0.96
N.32°07'W.	4.46
S.74°04'W.	1.02
N.56°09'W.	2.38
N.79°36'W.	15.65
Adj. 1897 L. B. Record Meanders	
N.33°57'W.	1.59
N.72°14'W.	3.47
S.68°42'W.	1.46
N.80°34'W.	3.92
N.77°15'W.	9.14
N.85°44'W.	2.08
AP sections 10 and 11	

2003 Arkansas River  
in Section 11  
Right Bank OHWM as Digitized

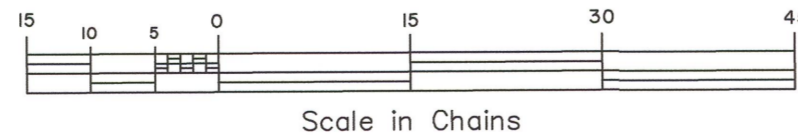
From AP, sections 11 and 12, at  
2003 Right Bank OHWM,  
thence upstream in section 11;

N.51°14'W.	3.87
N.59°10'W.	4.16
N.62°52'W.	8.13
N.73°16'W.	4.36
N.57°59'W.	2.37
N.57°53'W.	10.80
N.61°10'W.	2.61
Adj. 1897 R. B. Record Meanders	
N.65°39'W.	8.14
N.63°35'W.	14.90
N.68°57'W.	26.66
N.55°02'W.	3.51
AP sections 10 and 11	



2003 Arkansas Riverbed in Section 10  
Claim Area ±119.90 Acres

2003 Arkansas Riverbed in Section 11  
Claim Area ±148.65 Acres



Reference should be made to sheet No. 1 for survey and disclaimer information.

UNITED STATES DEPARTMENT OF THE INTERIOR  
BUREAU OF LAND MANAGEMENT

Sante Fe, New Mexico July 22, 2010

This plat is strictly conformable to the approved field notes, and the survey, having been correctly executed in accordance with the requirements of law and the regulations of this Bureau, is hereby accepted.

For the Director

*John A. Casias*

Chief Cadastral Surveyor for New Mexico