

TOWNSHIP 10 NORTH, RANGE 26 EAST, OF THE INDIAN MERIDIAN, OKLAHOMA  
SUPPLEMENTAL PLAT

2003  
Arkansas Riverbed  
In Section 17

From AP, sections 17 and 20,  
at 2003 Left Bank OHWM,  
thence upstream in section 17;  
N.73°15'W., 9.85  
AP, sections 17 and 18,  
S. 0°19'E., 3.07  
Cor. of S17-S18-S19-S20  
N.88°35'E., 9.41  
AP, sections 17 and 20, at  
2003 Left Bank OHWM, place  
of beginning, containing  
±1.44 Acres  
Claim Area

2003 Arkansas Riverbed and Cherokee Chute In Section 20

From AP, sections 20 and 21, at 2003 Left Bank OHWM, thence upstream in section 20;	N.56°56'W., 1.95	S.80°50'E., 2.88	S.8°15'E., 0.50
N.53°12'W., 2.86	N.83°58'W., 2.26	S.63°19'E., 2.17	S.73°59'E., 0.49
N.65°23'W., 4.60	S.12°13'W., 1.87	N.68°36'E., 1.93	S.60°02'E., 0.44
N.47°48'W., 3.41	N.7°43'W., 4.98	S.68°13'E., 5.82	S.46°47'E., 0.48
N. 8°58'E., 1.29	N.37°12'W., 4.24	S.20°19'W., 1.04	S.32°19'E., 0.26
N.37°38'W., 1.28	N.80°28'W., 2.51	S.14°16'E., 1.64	S.2°13'E., 0.19
AP, 2003 Right Bank OHWM Cherokee Chute, thence downstream;	S.4°31'W., 1.38	S.34°26'W., 1.77	S.30°38'W., 0.48
N.60°03'E., 3.62	N.67°18'W., 3.42	S.56°05'E., 3.10	S.15°39'W., 0.19
N.73°46'E., 1.88	N.74°32'W., 3.83	S.68°28'E., 2.61	S.10°00'E., 0.17
N.59°44'E., 1.85	S.75°19'W., 2.05	S.43°30'E., 0.42	S.39°35'E., 0.58
N.30°04'E., 3.52	N.60°51'W., 2.01	S.30°58'E., 0.42	S.2°36'E., 0.67
S.72°42'E., 0.64	N.60°51'W., 5.04	S.23°14'E., 1.38	S.38°09'E., 0.45
S.10°29'E., 1.22	S.87°44'W., 5.69	S.5°45'E., 1.79	S.8°24'E., 0.21
S.58°14'E., 0.385	S.8°05'W., 2.98	N.66°02'E., 5.06	N.7°57'E., 0.56
AP, sections 20 and 21, N. 0°31'W., 2.62	N.52°50'W., 3.91	S.55°16'E., 1.16	N.86°47'E., 0.27
1897 MC, sections 20 and 21, N. 0°31'W., 1.676	N.26°12'W., 5.28	S.39°51'E., 1.13	S.7°05'E., 0.12
AP, sections 20 and 21, 2003 Right Bank OHWM Cherokee Chute, N.55°53'W., 0.061	N.40°12'W., 3.75	S.50°44'E., 2.72	S.30°10'E., 0.65
N. 8°07'E., 0.333	1897 MC, sections 20 and 21, N. 0°31'W., 0.48	S.57°58'W., 8.96	S.43°48'E., 1.27
AP, sections 20 and 21, N. 0°31'W., 12.42	N.73°15'W., 0.48	S.25°21'E., 3.17	S.37°36'E., 3.58
AP, sections 20 and 21, 2003 Left Bank OHWM Cherokee Chute, thence upstream; S.63°24'W., 1.05	AP, sections 17 and 20, S.88°35'W., 9.41	AP, sections 17 and 20, S.88°35'W., 9.41	S.20°02'E., 0.96
S.74°40'W., 7.28	Cor. of S17-S18-S19-S20 S. 0°19'E., 29.06	Cor. of S17-S18-S19-S20 S. 0°19'E., 29.06	S.60°38'E., 5.31
S.64°46'W., 11.50	AP, sections 19 and 20 at 2003 Right Bank OHWM, thence downstream;	AP, sections 19 and 20 at 2003 Right Bank OHWM, thence downstream;	S.65°38'E., 1.66
S.22°33'E., 5.74	S.89°01'E., 3.57	S.89°01'E., 3.57	S.44°58'E., 0.81
S. 9°16'E., 2.04	N.79°19'E., 10.02	N.79°19'E., 10.02	S. 0°36'W., 0.76
AP, 2003 Left Bank OHWM Arkansas River, thence upstream; continued on next column	S.8°43'E., 6.14	S.8°43'E., 6.14	S. 0°19'E., 29.06
	S.80°54'E., 4.24	S.80°54'E., 4.24	AP, sections 20 and 21, at 2003 Left Bank OHWM, place of beginning, containing ±222.76 Acres Claim Area
	S.79°20'E., 1.00	S.79°20'E., 1.00	
	S.15°57'W., 0.91	S.15°57'W., 0.91	
	S.33°28'E., 0.73	S.33°28'E., 0.73	
	S.59°1'E., 0.85	S.59°1'E., 0.85	
	S.63°49'E., 8.29	S.63°49'E., 8.29	
	continued on next column	continued on next column	

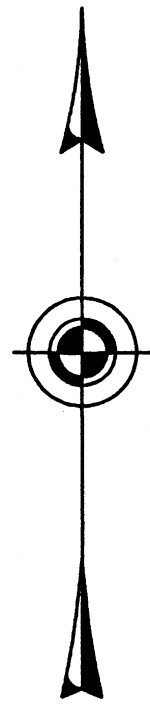
Sec. 18

Sec. 17

Sec. 19

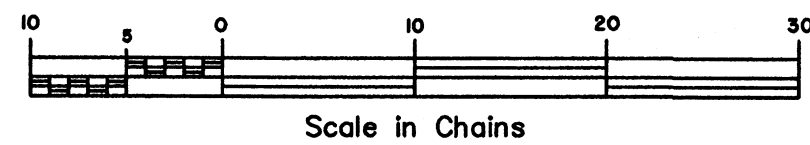
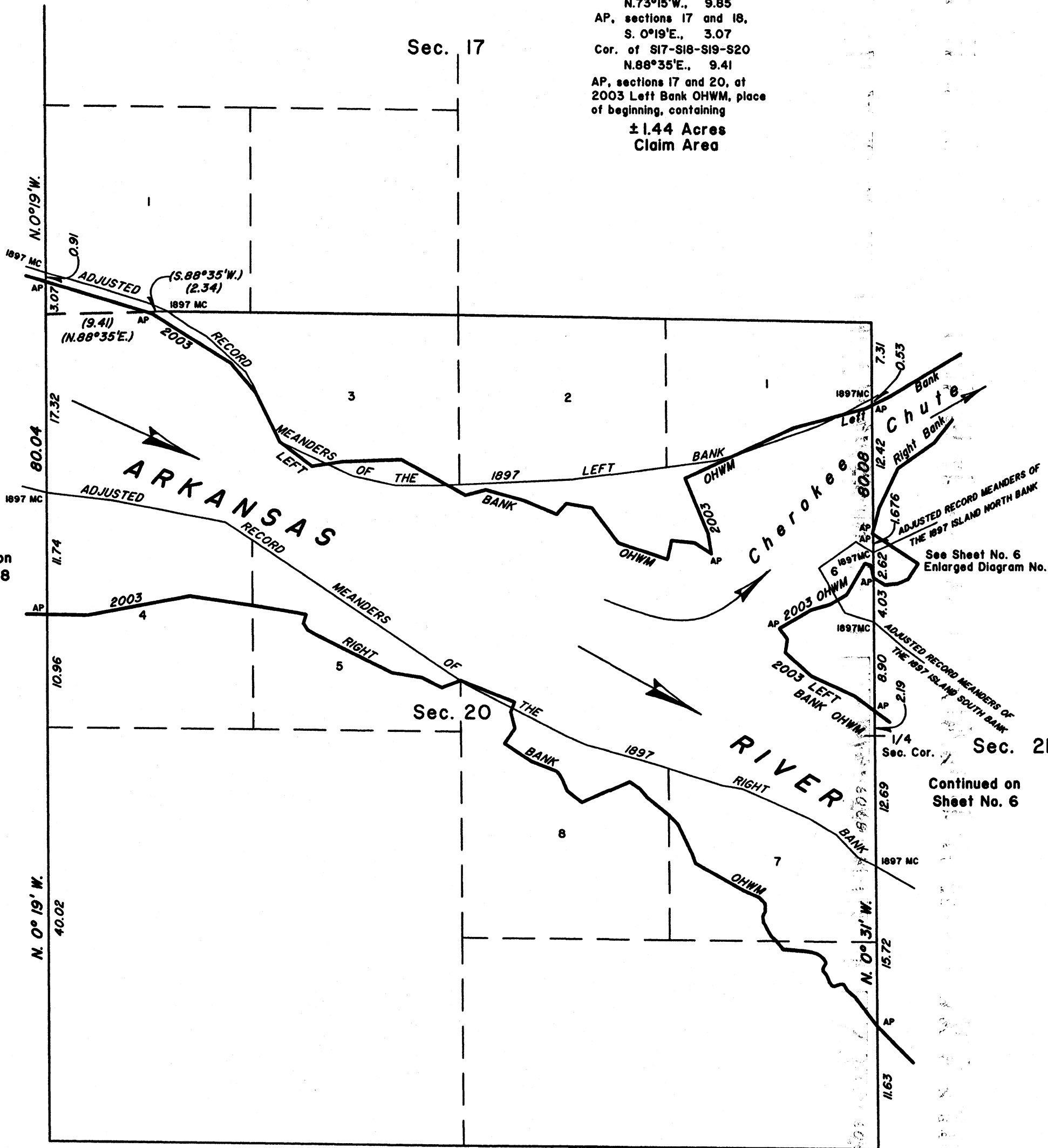
Sec. 20

Sec. 21



Continued on  
Sheet No. 8

Continued on  
Sheet No. 6



Reference should be made to sheet No. 1 for survey information.

UNITED STATES DEPARTMENT OF THE INTERIOR  
BUREAU OF LAND MANAGEMENT

Santa Fe, New Mexico October 2, 2008

This plat, showing amended boundaries and areas is based upon the official records and, having been correctly prepared in accordance with the regulations of this Bureau is hereby accepted.

For the Director

*John A. Casian*

Chief Cadastral Surveyor for New Mexico

RLS