

TOWNSHIP II NORTH, RANGE 22 EAST, OF THE INDIAN MERIDIAN, OKLAHOMA
DEPENDENT RESURVEY AND SURVEY

A history of surveys and additional information are contained in the field notes.

This plat, in eight sheets, represents the dependent resurvey of a portion of the west boundary, a portion of the subdivisional lines and the adjusted record meanders, in certain sections, of the 1897 right and left banks of the Arkansas River, designed to restore the corners in their true original locations according to the best available evidence, the informative traverse, in certain sections, of the 2003 right and left banks ordinary high water mark (OHWM) of the Arkansas River, as digitized from aerial photography (identifying said riverbed as instructed by Public Law No. 107-331, enacted December 13, 2002), and the calculated acreages of the Arkansas Riverbed, Township II North, Range 22 East, Indian Meridian, Oklahoma.

The boundaries of the 1966 Arkansas River in sections 21-23, 25 and 26 were digitized from the 1967/1982, 7.5 minute series, U.S.G.S. "Vian Quadrangle" and is the best available evidence documenting movements of said river prior to construction of Kerr Dam. This evidence indicates the river moved northerly into sections 21-23 and southerly at the eastern side of the township by accretive and erosive processes until 1966 after which the reservoir behind Kerr Dam inundated both the upland and riverbed areas in an avulsive action. The boundaries of the Historic Riverbed are based on examination of the best available evidence including aerial photography and historic maps.

Except as indicated hereon, the lottings and areas are as shown on the plat approved November 1, 1898. Rectangular survey lines not showing bearings and distances were surveyed by George Nick and Fred Watts Jr. in 1897.

Bearings and distances depicted in parenthesis on certain lines represent calculated data. The intersections of the 2003 and 1966 digitized banks with surveyed lines were not verified by a field survey.

Survey executed by Mark L. Bush, Supervisory Cadastral Surveyor and Randall L. Anstey, Cadastral Surveyor, beginning March 16, 1990 and completed May 31, 1990, pursuant to Special Instructions dated March 7, 1990 for Group No. 66, Oklahoma.

SETTLEMENT ACT

The Settlement Act of January 23, 2002, set forth in Public Law No. 107-331, dated December 13, 2002, defines in Sections 602 (17), 604 (2),(4) and (6) and 605 of said act, the Indian Nations claim to certain riverbed and wetbed lands. Further defined, said Section 602 (17), provides that "... each Indian Nation expressly reserved all of its beneficial interest and title to all other Riverbed lands, including minerals", pursuant to United States Supreme Court decision 397 U.S. 620 (1970), "and further reserved any and all right, title, or interest that each nation may have in and to the water flowing in the Arkansas River and its tributaries." The status of lands are as defined in said act.

UNITED STATES DEPARTMENT OF THE INTERIOR
BUREAU OF LAND MANAGEMENT

Santa Fe, New Mexico

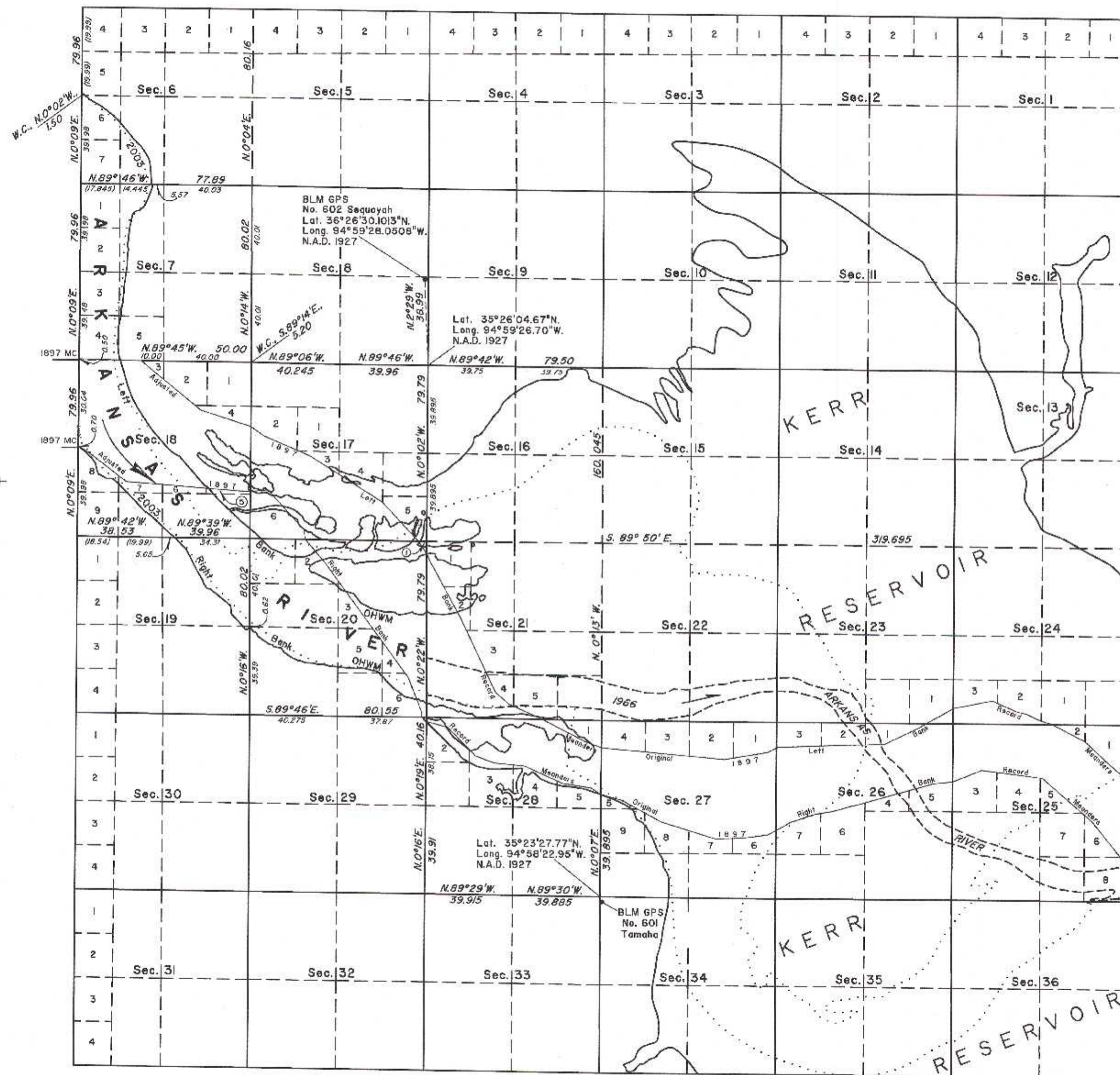
July 22, 2011

This plat is strictly conformable to the approved field notes, and the survey, having been correctly executed in accordance with the requirements of law and the regulations of this Bureau, is hereby accepted.

For the Director

Phil A. Casian

Chief Cadastral Surveyor for New Mexico



INDEX OF SECTION ENLARGEMENTS

SECTION 6	See Sheet No. 2	SECTION 19	See Sheet No. 4
SECTION 7	See Sheet No. 2	SECTION 20	See Sheet No. 4
SECTION 17	See Sheet No. 3	SECTION 21	See Sheet No. 5
SECTION 18	See Sheet No. 3	SECTION 28	See Sheet No. 5

Boundary of Historic Riverbed (.....)
See Sheet No. 6 for Table of Historic Riverbed
See Sheet No. 7 for Table of 1966 Arkansas River
See Sheet No. 8 for Kerr Reservoir Claim Areas

