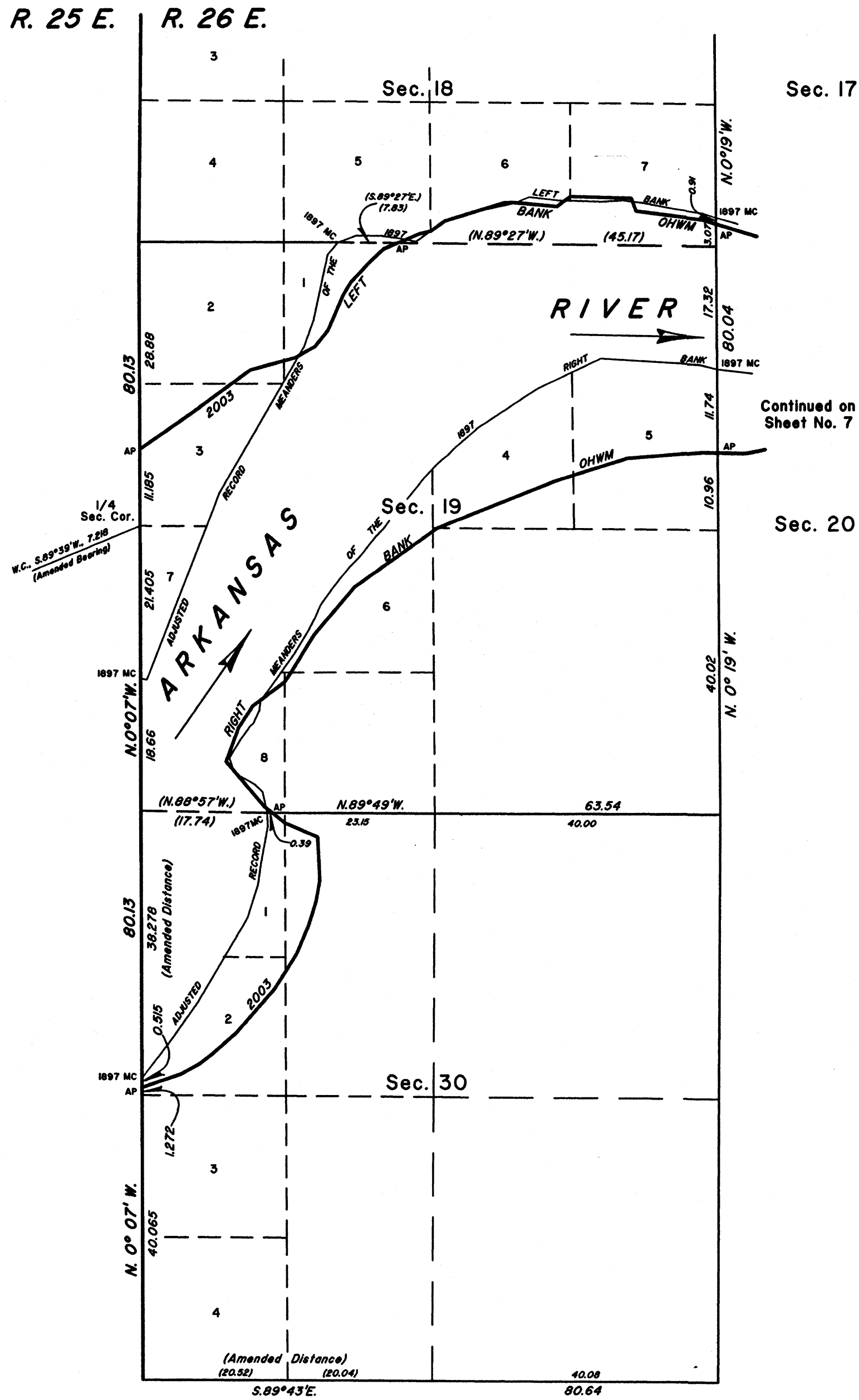


TOWNSHIP 10 NORTH, RANGE 26 EAST, OF THE INDIAN MERIDIAN, OKLAHOMA
SUPPLEMENTAL PLAT



2003 Arkansas Riverbed in Section 18

From AP, sections 17 and 18, at 2003 Left Bank OHWM, thence upstream in section 18:

N.73°15'W.,	0.45
N.73°15'W.,	2.00
N.82°45'W.,	9.36
N.19°14'W.,	1.93
N.88°23'W.,	8.60
S.53°19'W.,	0.98
S.53°05'W.,	1.35
N.84°40'W.,	6.15
S.86°53'W.,	1.37
S.72°46'W.,	8.60
S.54°33'W.,	2.46
S.76°05'W.,	1.62
S.67°10'W.,	3.41
AP, sections 18 and 19,	
N.89°27'E.,	45.17
Cor. of S17-S18-S19-S20	
N. 0°19'W.,	3.07
AP, sections 17 and 18, at	
2003 Left Bank OHWM, place	
of beginning, containing	
± 21.02 Acres	
Claim Area	

2003 Arkansas Riverbed in Section 19

From AP, sections 18 and 19, at 2003 Left Bank OHWM, thence upstream in section 19:

S.67°10'W.,	2.02
S.46°55'W.,	2.63
S.43°17'W.,	3.96
S.31°00'W.,	2.13
S.23°23'W.,	5.38
S.38°27'W.,	2.94
S.60°23'W.,	3.18
S.74°41'W.,	1.64
S.74°41'W.,	4.94
S.53°27'W.,	3.30
S.53°27'W.,	6.41
S.55°07'W.,	8.90
AP, sections 19 and 24,	
S. 0°07'E.,	51.25
Cor. of S19-S24-S25-S30	
S.88°57'E.,	17.74
1897 MC, sections 19 and 30,	
S.89°49'E.,	0.39
AP, sections 19 and 30 at	
2003 Right Bank OHWM,	
thence downstream:	
N.51°09'W.,	0.05
N.51°09'W.,	1.48
N.40°14'W.,	8.26
N.19°46'E.,	5.06
N.33°07'E.,	3.67
N.53°00'E.,	5.62
N.34°13'E.,	1.64
N.31°29'E.,	6.14
N.40°32'E.,	8.86
N.54°24'E.,	13.50
N.54°24'E.,	0.78
N.68°12'E.,	17.57
N.72°16'E.,	2.89
N.72°16'E.,	7.95
N.85°20'E.,	10.69
S.89°01'E.,	2.03
S.89°01'E.,	0.37
AP, sections 19 and 20,	
N. 0°19'W.,	29.06
Cor. of S17-S18-S19-S20	
N.89°27'W.,	45.17
AP, sections 18 and 19, at	
2003 Left Bank OHWM, place	
of beginning, containing	
± 329.00 Acres	
Claim Area	

2003 Arkansas Riverbed in Section 30

From AP, sections 19 and 30, at 2003 Right Bank OHWM, thence upstream in section 30:

S.5°09'E.,	2.20
S.66°48'E.,	5.00
S. 2°39'E.,	6.14
S.10°08'W.,	3.02
S.17°35'W.,	3.56
S.22°51'W.,	4.27
S.32°09'W.,	2.95
S.32°09'W.,	2.86
S.40°54'W.,	8.08
S.48°16'W.,	4.40
S.52°26'W.,	2.53
S.6°10'W.,	3.01
S.7°02'W.,	5.36
AP, sections 25 and 30,	
N.0°07'W.,	38.793
Cor. of S19-S24-S25-S30	
S.88°57'E.,	17.74
1897 MC, sections 19 and 30,	
S.89°49'E.,	0.39
AP, sections 19 and 30, at	
2003 Right Bank OHWM,	
place of beginning, containing	
± 71.73 Acres	
Claim Area	

Reference should be made to sheet No. 1 for survey information.

UNITED STATES DEPARTMENT OF THE INTERIOR
BUREAU OF LAND MANAGEMENT

Santa Fe, New Mexico

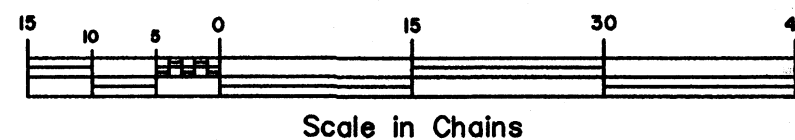
October 2, 2008

This plat, showing amended boundaries and areas is based upon the official records and, having been correctly prepared in accordance with the regulations of this Bureau is hereby accepted.

For the Director

John A. Casias

Chief Cadastral Surveyor for New Mexico



Scale in Chains