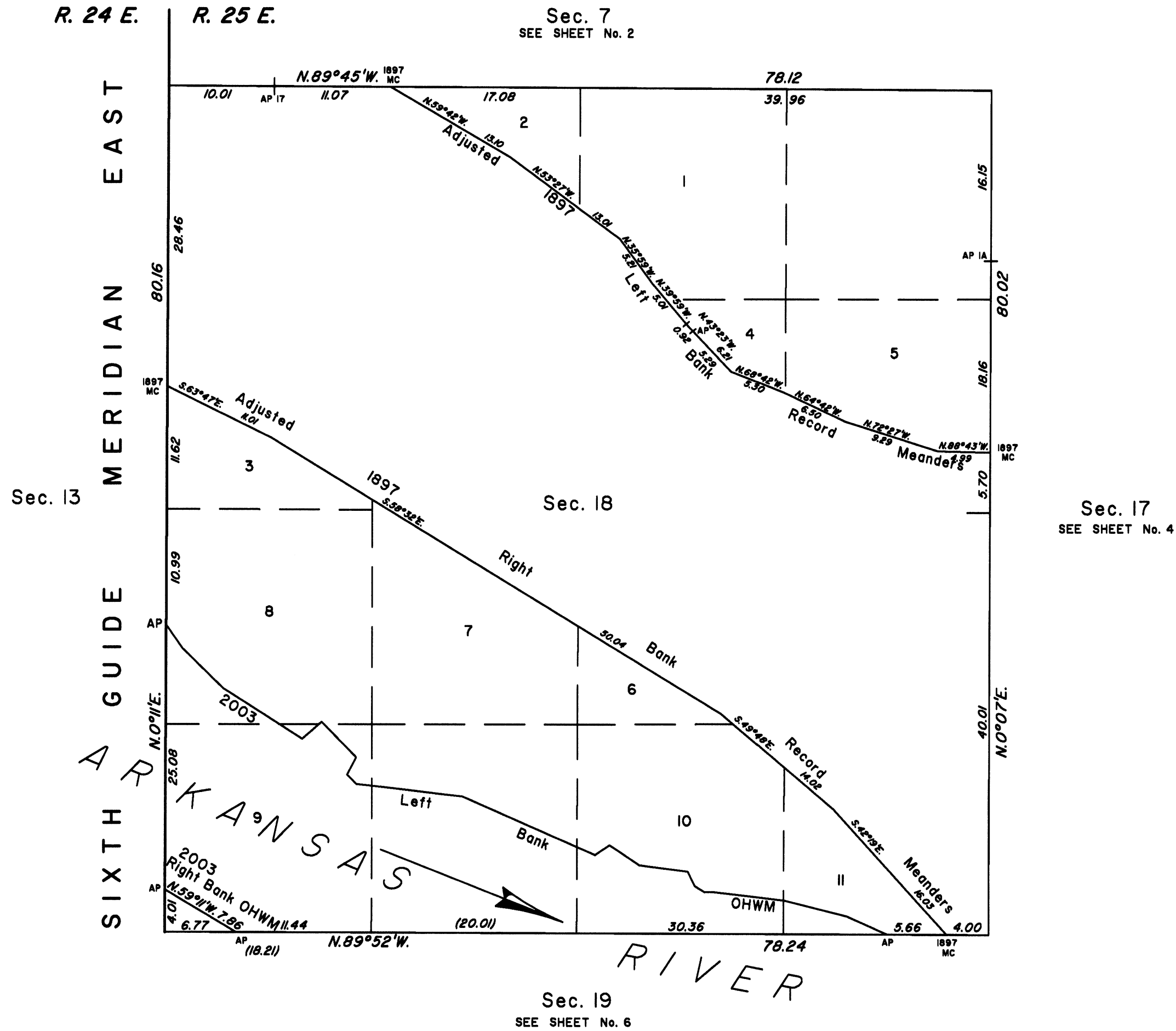
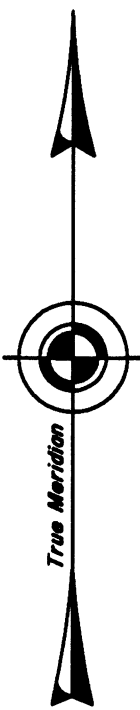


TOWNSHIP 10 NORTH, RANGE 25 EAST, OF THE INDIAN MERIDIAN, OKLAHOMA
DEPENDENT RESURVEY AND SURVEY



2003 Arkansas River in Section 18 Left Bank OHWM as Digitized

From AP, sections 18 and 19, at 2003 Left Bank OHWM, thence upstream in section 18:

N.65°58'W.,	4.23
N.63°01'W.,	0.01
N.75°53'W.,	6.09
N.83°16'W.,	6.82
S.88°08'W.,	0.80
N.58°25'W.,	1.12
N.25°18'W.,	1.50
N.82°39'W.,	4.63
N.56°11'W.,	3.41
S.55°59'W.,	1.66
N.66°17'W.,	1.86
N.66°17'W.,	11.88
N.83°20'W.,	8.61
N.83°20'W.,	1.52
N.45°17'W.,	1.25
N.27°55'E.,	1.86
N.44°18'W.,	4.69
S.49°19'W.,	2.45
N.57°32'W.,	2.97
N.57°32'W.,	5.94
N.45°33'W.,	5.41
N.35°13'W.,	2.71

AP, sections 13 and 18

Reference should be made to sheet No. 1 for survey and disclaimer information.

UNITED STATES DEPARTMENT OF THE INTERIOR
BUREAU OF LAND MANAGEMENT
Sante Fe, New Mexico April 30, 2010

This plat is strictly conformable to the approved field notes, and the survey, having been correctly executed in accordance with the requirements of law and the regulations of this Bureau, is hereby accepted.

For the Director
Robert A. Cassia
Chief Cadastral Surveyor for New Mexico

