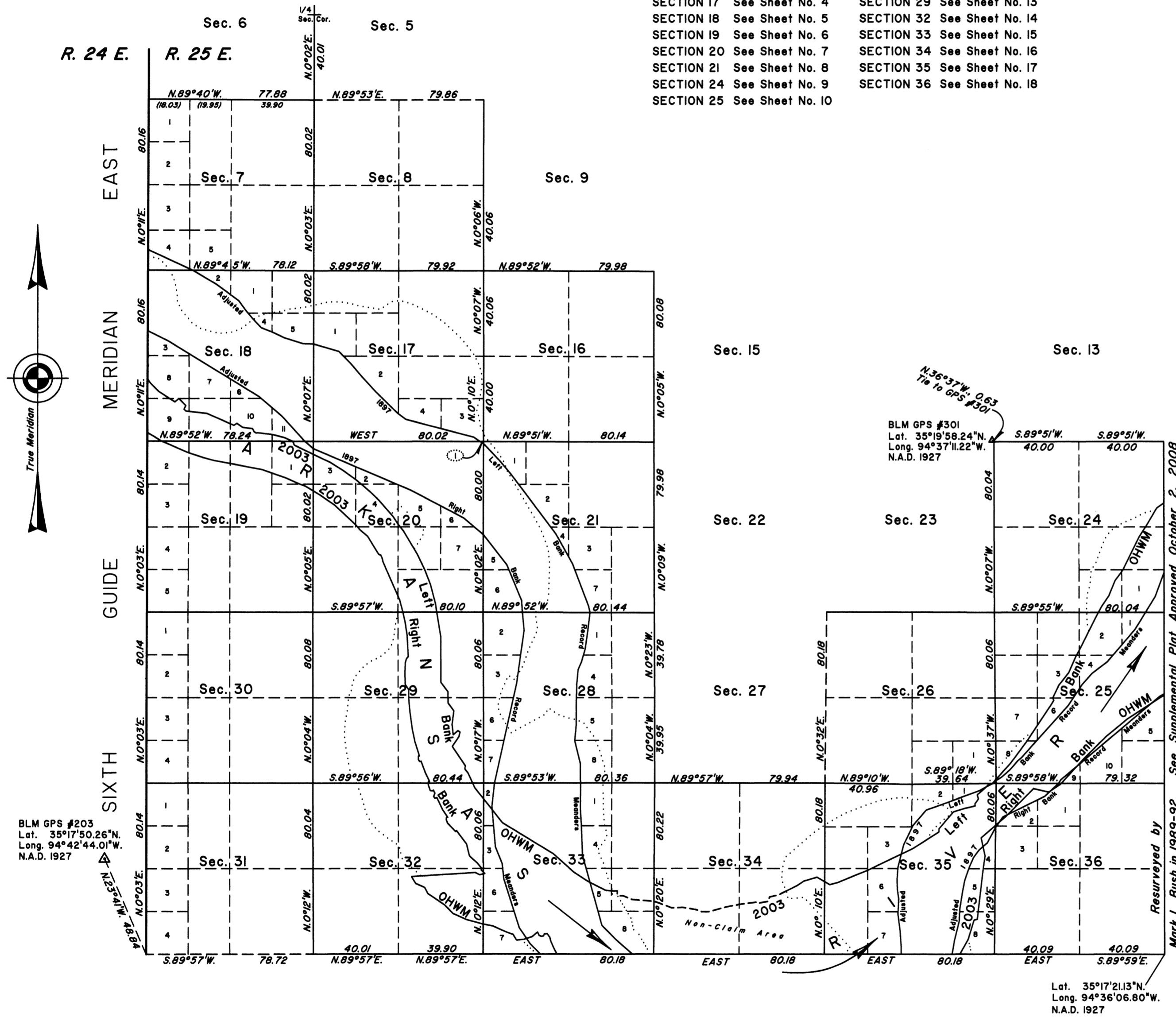


TOWNSHIP 10 NORTH, RANGE 25 EAST, OF THE INDIAN MERIDIAN, OKLAHOMA
DEPENDENT RESURVEY AND SURVEY

INDEX OF SECTION ENLARGEMENTS

SECTION 7	See Sheet No. 2	SECTION 26	See Sheet No. 11
SECTION 16	See Sheet No. 3	SECTION 28	See Sheet No. 12
SECTION 17	See Sheet No. 4	SECTION 29	See Sheet No. 13
SECTION 18	See Sheet No. 5	SECTION 32	See Sheet No. 14
SECTION 19	See Sheet No. 6	SECTION 33	See Sheet No. 15
SECTION 20	See Sheet No. 7	SECTION 34	See Sheet No. 16
SECTION 21	See Sheet No. 8	SECTION 35	See Sheet No. 17
SECTION 24	See Sheet No. 9	SECTION 36	See Sheet No. 18
SECTION 25	See Sheet No. 10		



A history of surveys and additional information are contained in the field notes.

This plat, in eighteen sheets, represents the dependent resurvey of a portion of the Sixth Guide Meridian East (west boundary), the south boundary, a portion of the subdivisional lines, and the adjusted record meanders of the 1897 left and right banks of the Arkansas River, designed to restore the corners in their true original locations according to the best available evidence, the informative traverse of the 2003 right and left banks ordinary high water mark (OHWM) of the Arkansas River, as digitized from aerial photography (identifying said riverbed as instructed by Public Law No. 107-331, enacted December 13, 2002), the calculated acreages of the Arkansas Riverbed and the informative survey of the boundary of the historic riverbed of the Arkansas River, Township 10 North, Range 25 East, Indian Meridian, Oklahoma.

Except as indicated hereon, the lottings and areas are as shown on the plat approved November 2, 1898 and the supplemental plat of T. 10 N., R. 26 E., approved October 2, 2008. The intersections of the 2003 digitized banks with surveyed lines were not verified by a field survey.

Survey executed by Mark L. Bush, Supervisory Cadastral Surveyor, beginning February 1, 1990 and completed July 10, 1993, pursuant to Special Instructions dated June 23, 1989, and Supplemental Special Instructions dated July 5, 1989, January 22, 1990 and February 26, 1990 for Group No. 61, Oklahoma.

Rectangular survey lines not showing bearings and distances were surveyed by F.M. Johnson and J.C. Wilkinson in 1897.

DISCLAIMER WITH EXCLUSIONS

This disclaimer, as set forth in Public Law No. 107-331, Sec 603, dated December 13, 2002, provides: "...that the Indian Nations are forever disclaiming any right, title, or interest in the Disclaimed Drybed Lands, which are contiguous to the channel of this title in certain townships in eastern Oklahoma". Sec. 604, of said title, lists the affected townships and defines the term "Drybed Lands". Sec. 605(b)(2)(A), of said title, provides: "Notwithstanding any provision of this title, the Indian Nations do not relinquish any right, title, or interest in any lands which constitute the Wetbed Lands subject to the navigational servitude exercised by the United States on the Wetbed Lands." Sec. 604, defines "Wetbed Lands" as "...those Riverbed Lands which lie below the mean high water mark of the Arkansas River...". Sec. 605(b)(2)(C) of said title, provides: "...the Indian Nations do not relinquish any right, title, or interest in any lands or minerals of certain unallotted tracts which are identified in the official records of the Eastern Oklahoma Regional Office, Bureau of Indian Affairs." The specific exclusions in this township are: Unallotted Tract 219, located within Lot 1, Sec. 19, and also including Lots 2 and 6 and also within Lots 3,4,5 and 7, Sec. 20, and also within Lots 5 and 6, Sec. 21; and Unallotted Tract 222, located within Lots 3 and 7, and also including Lot 6, Sec. 33.

UNITED STATES DEPARTMENT OF THE INTERIOR
BUREAU OF LAND MANAGEMENT

Santa Fe, New Mexico April 30, 2010

This plat is strictly conformable to the approved field notes, and the survey, having been correctly executed in accordance with the requirements of law and the regulations of this Bureau, is hereby accepted.

For the Director

Robert A. Casias

Chief Cadastral Surveyor for New Mexico

Boundary of Historic Riverbed

