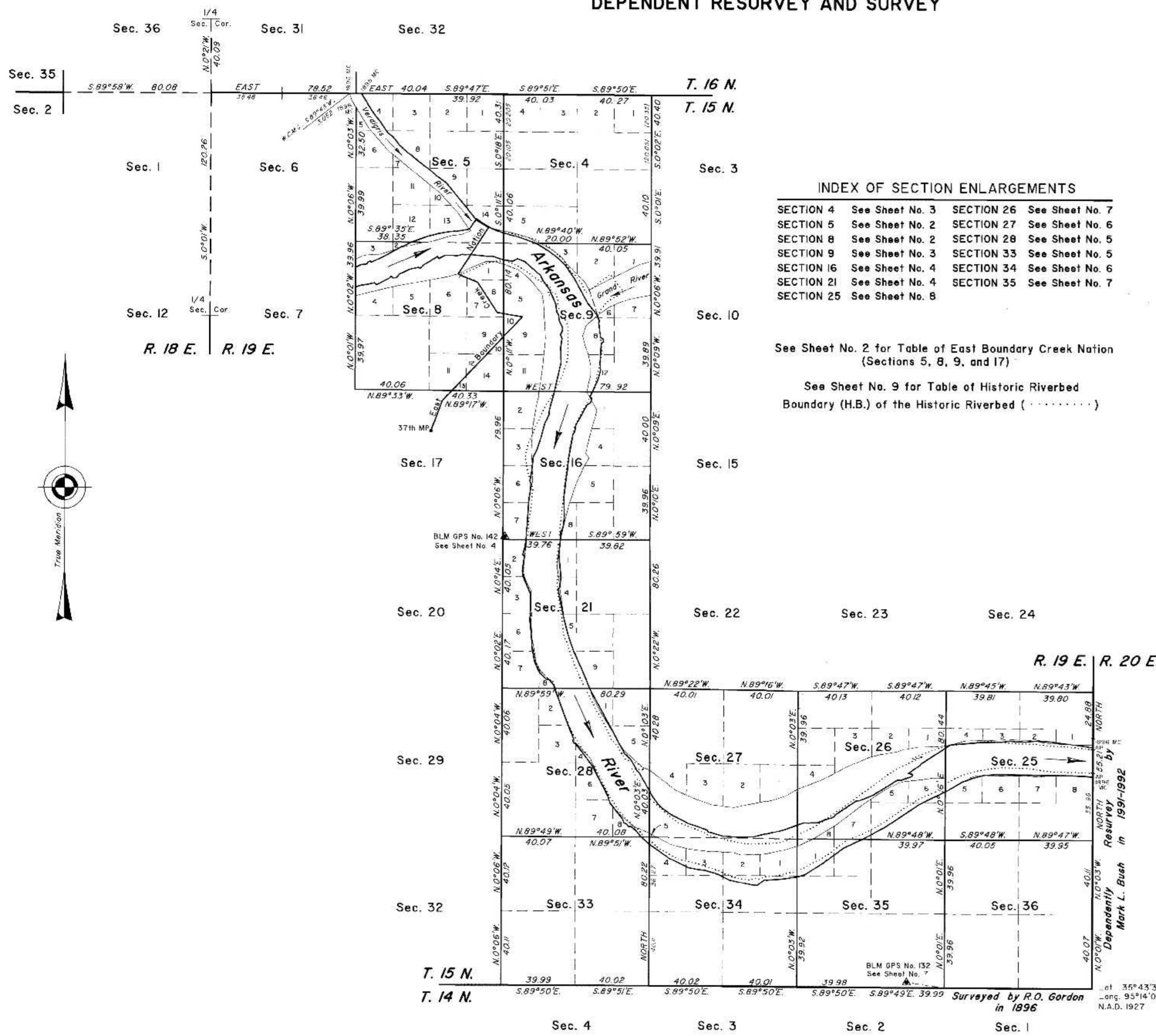


TOWNSHIP 15 NORTH, RANGE 19 EAST, OF THE INDIAN MERIDIAN, OKLAHOMA

DEPENDENT RESURVEY AND SURVEY



INDEX OF SECTION ENLARGEMENTS

SECTION 4	See Sheet No. 3	SECTION 26	See Sheet No. 7
SECTION 5	See Sheet No. 2	SECTION 27	See Sheet No. 6
SECTION 8	See Sheet No. 2	SECTION 28	See Sheet No. 5
SECTION 9	See Sheet No. 3	SECTION 33	See Sheet No. 5
SECTION 16	See Sheet No. 4	SECTION 34	See Sheet No. 6
SECTION 21	See Sheet No. 4	SECTION 35	See Sheet No. 7
SECTION 25	See Sheet No. 8		

See Sheet No. 2 for Table of East Boundary Creek Nation (Sections 5, 8, 9, and 17)

See Sheet No. 9 for Table of Historic Riverbed Boundary (H.B.) of the Historic Riverbed (.....)

A history of surveys and additional information are contained in the field notes.

This plat, in nine sheets, represents the dependent resurvey of a portion of the east boundary of the Creek Nation, a portion of the north and south boundaries, a portion of the subdivisional lines, the adjusted record meanders of the 1896 right and left banks of the Arkansas River, a portion of the 1896 left and right banks of the Grand River and the 1896 left bank of the Verdigris River, designed to restore the corners in their true original locations according to the best available evidence, the informative traverse of the 2003 right and left banks ordinary high water mark (OHWM) of the Arkansas River, as digitized from aerial photography (identifying said riverbed as instructed by Public Law No. 107-331, enacted December 13, 2002), and the informative survey of the right and left boundaries of the historic riverbed of the Arkansas River and the calculated acreages of the Arkansas Riverbed, Township 15 North, Range 19 East, Indian Meridian, Oklahoma.

Except as indicated hereon, the lattings and areas are as shown on the plat approved July 11, 1898.

The intersections of the 2003 digitized banks with surveyed lines were not verified by a field survey.

Survey executed by Mark L. Bush, Supervisory Cadastral Surveyor, beginning July 15, 1991 and completed September 9, 1993, pursuant to Special Instructions dated July 23, 1990, for Group No. 67, Oklahoma.

SETTLEMENT ACT

The Settlement Act of January 23, 2002, set forth in Public Law No. 107-331, dated December 13, 2002, defines in Sections 602 (17), 604 (2),(4) and (6) and 605 of said act, the Indian Nations claim to certain riverbed and wetbed lands. Further defined, said Section 602 (17), provides that "... each Indian Nation expressly reserved all of its beneficial interest and title to all other Riverbed lands, including minerals", pursuant to United States Supreme Court decision 397 U.S. 620 (1970), "and further reserved any and all right, title, or interest that each nation may have in and to the water flowing in the Arkansas River and its tributaries." The status of lands are as defined in said act.

UNITED STATES DEPARTMENT OF THE INTERIOR
BUREAU OF LAND MANAGEMENT

Santa Fe, New Mexico December 19, 2012

This plat is strictly conformable to the approved field notes, and the survey, having been correctly executed in accordance with the requirements of law and the regulations of this Bureau, is hereby accepted.

For the Director

Chief Cadastral Surveyor for New Mexico

Lat. 35° 43' 32.73" N.
Long. 95° 14' 00.67" W.
N.A.D. 1927

Surveyed by R.O. Gordon
in 1896

Resurveyed by Mark L. Bush in 1991-1992