

TOWNSHIP 10 NORTH, RANGE 25 EAST, OF THE INDIAN MERIDIAN, OKLAHOMA
DEPENDENT RESURVEY AND SURVEY

2003 Arkansas River in Section 35
Left Bank OHWM as Digitized

From AP, sections 26 and 35, at 2003 Left Bank OHWM, thence upstream in section 35;

- S.45°04'W., 0.36
- Adj. 1897 L. B. Meanders
- S.45°04'W., 0.16
- 28
- S.83°30'W., 0.12
- Adj. 1897 L. B. Meanders
- S.83°30'W., 0.80
- Bdy. Historic Riverbed
- S.83°30'W., 0.37
- 29
- S.46°53'W., 1.71
- Adj. 1897 L. B. Meanders
- S.46°53'W., 1.40
- 30
- S.49°32'W., 4.21
- S.16°07'E., 1.98
- S.34°38'W., 2.86
- S. 8°17'E., 0.94
- S.76°12'W., 1.82
- S.76°01'W., 3.23
- S.73°07'W., 5.58
- S.40°32'W., 10.55
- S. 0°52'W., 1.39
- 39
- S.57°28'W., 7.24
- AP3A, Bdy. Historic Riverbed
- S.57°28'W., 7.09
- 40
- S.64°23'W., 6.30
- Adj. 1897 L. B. Meanders
- S.64°23'W., 15.58
- S.65°58'W., 1.98
- S.67°39'W., 15.05
- S.74°54'W., 3.89
- N.60°16'W., 2.80
- AP, sections 34 and 35

2003 Arkansas River in Section 35
Right Bank OHWM as Digitized

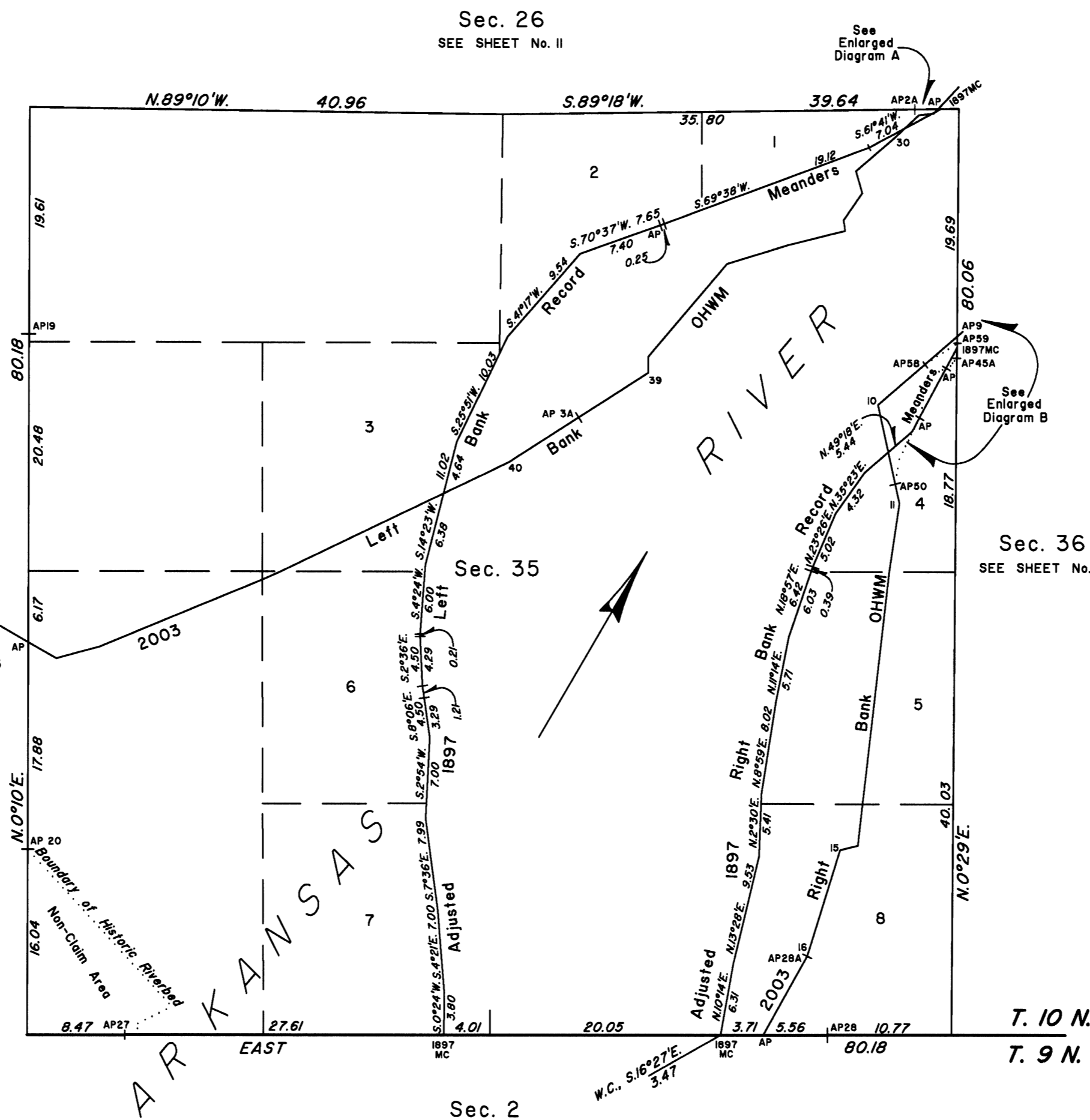
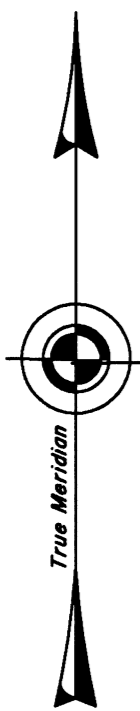
From AP, sections 35 and 36, at 2003 Right Bank OHWM, thence upstream in section 35;

- S.49°13'W., 3.71
- AP5B, Bdy. Historic Riverbed
- S.49°13'W., 5.34
- 10
- S.12°18'E., 4.18
- Adj. 1897 R. B. Meanders
- S.12°18'E., 2.82
- AP50, Bdy. Historic Riverbed
- S.12°18'E., 1.73
- 11
- S. 8°37'W., 5.97
- S. 6°34'W., 20.26
- S. 6°34'W., 3.56
- S.76°10'W., 1.59
- 15
- S.17°19'W., 9.59
- 16
- S.29°13'W., 0.01
- AP28A, Bdy. Historic Riverbed
- S.29°13'W., 7.82
- AP, sections 2 and 35

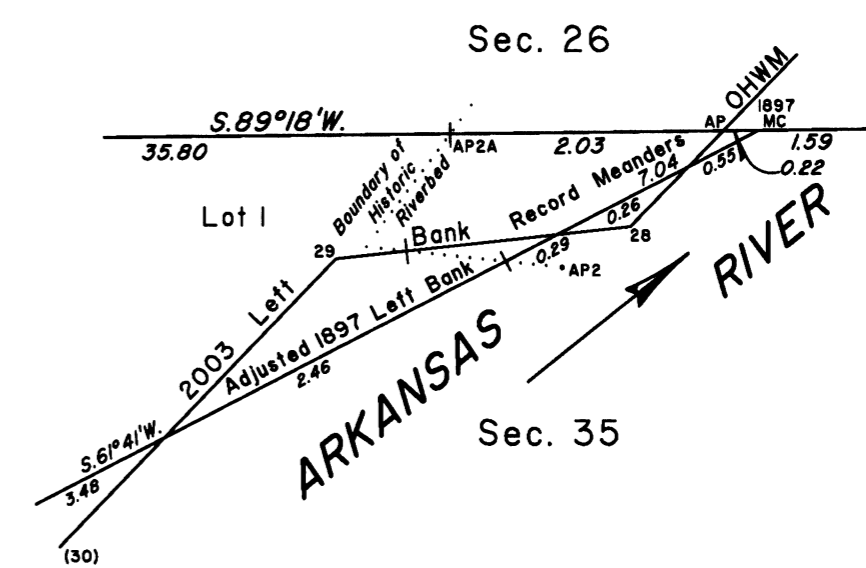
Boundary of Historic Riverbed in Section 35

From AP 20, sections 34 and 35, at Bdy. of Historic Riverbed, thence;

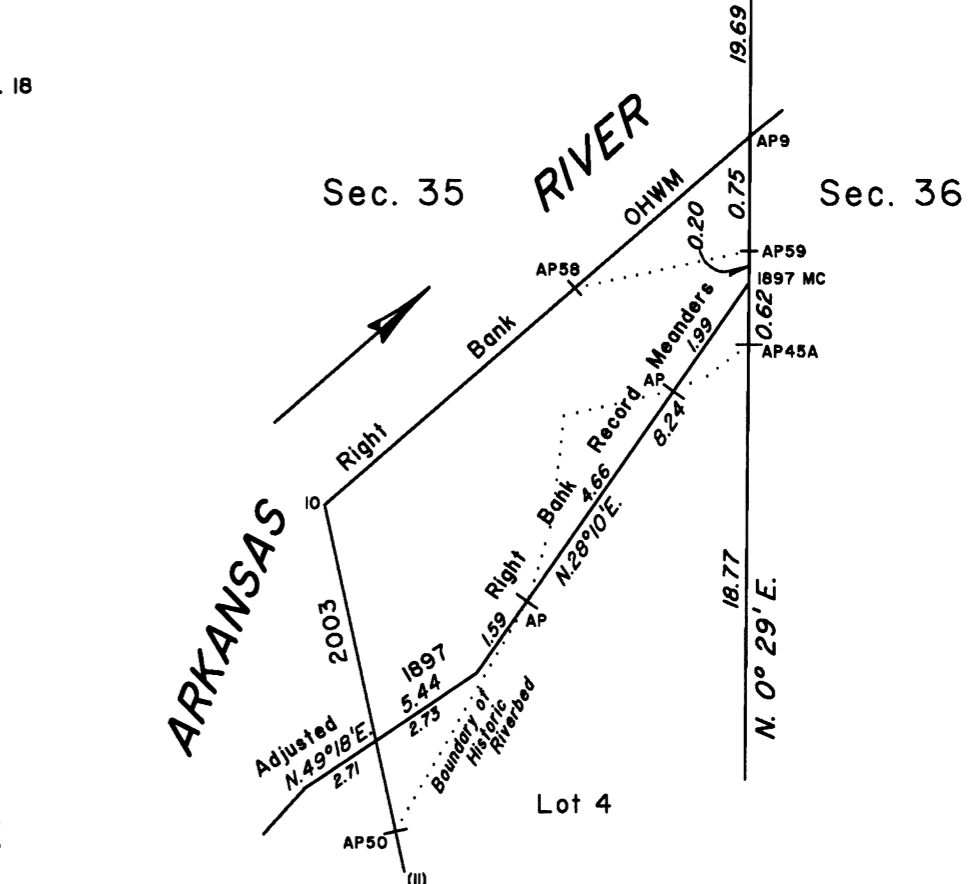
- S.42°34'E., 1.63
- S.42°35'E., 10.45
- S.42°35'E., 6.05
- S.25°12'W., 0.55
- S.63°35'W., 2.77
- S. 2°34'W., 0.43
- S.64°09'W., 1.24
- AP 27, sections 2 and 35



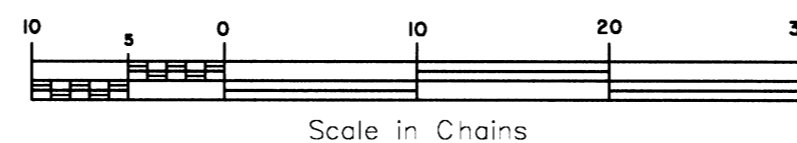
ENLARGED DIAGRAM A
(Not to Scale)



ENLARGED DIAGRAM B
(Not to Scale)



2003
Arkansas Riverbed
in Section 35
Claim Area ±360.10 Acres
Non-Claim Area ±11.06 Acres



Reference should be made to sheet No. 1 for survey and disclaimer information.

UNITED STATES DEPARTMENT OF THE INTERIOR
BUREAU OF LAND MANAGEMENT

Sante Fe, New Mexico April 30, 2010

This plat is strictly conformable to the approved field notes, and the survey, having been correctly executed in accordance with the requirements of law and the regulations of this Bureau, is hereby accepted.

For the Director

Phet A. Casias

Chief Cadastral Surveyor for New Mexico