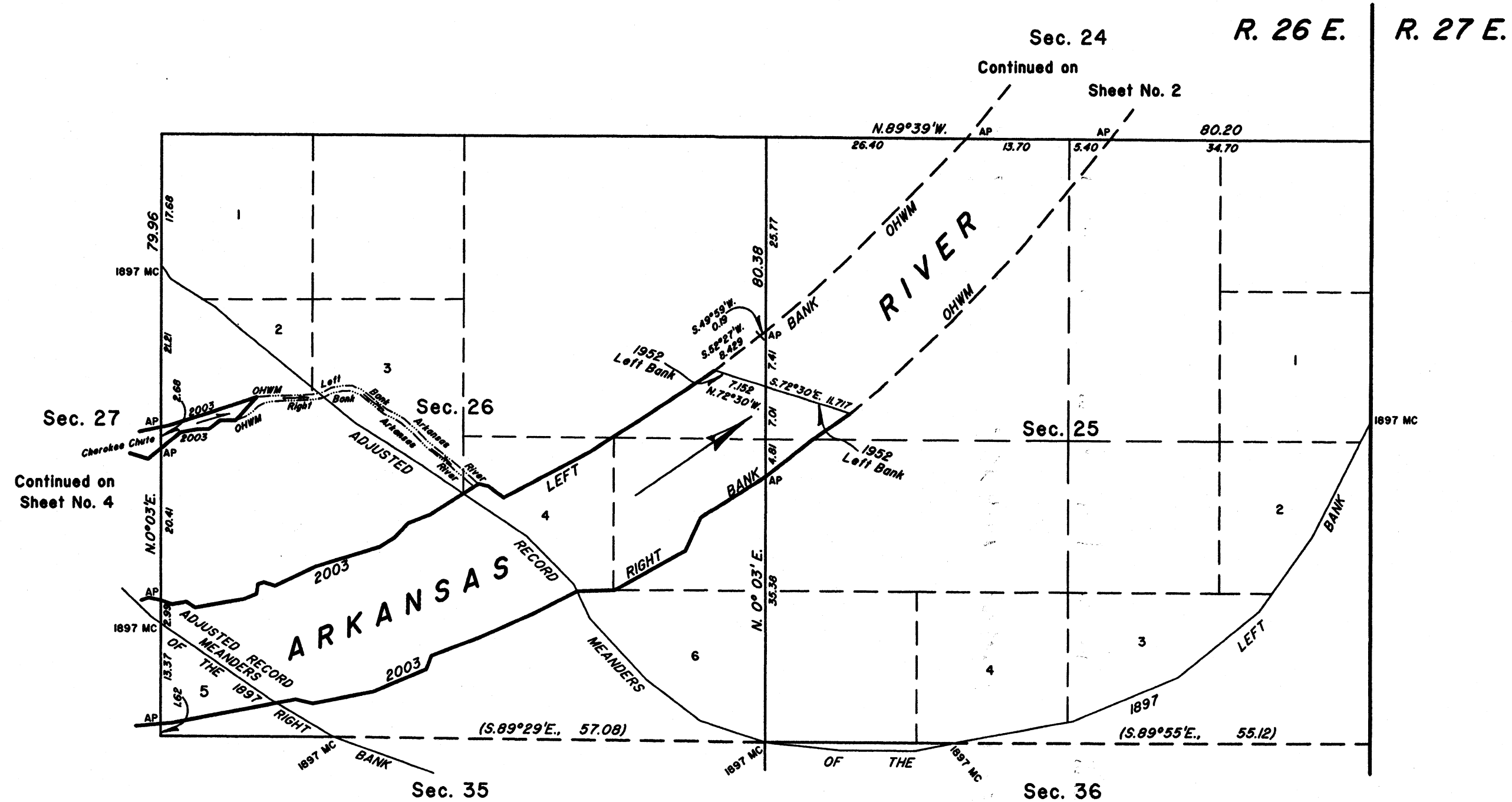


TOWNSHIP 10 NORTH, RANGE 26 EAST, OF THE INDIAN MERIDIAN, OKLAHOMA  
SUPPLEMENTAL PLAT



2003 Cherokee Chute of Arkansas River in Section 26

From AP, sections 26 and 27, at 2003 OHWM Left Bank Cherokee Chute, thence downstream in section 26;

N.78°20'E.,	0.89
N.72°37'E.,	5.32
N.71°40'E.,	6.93
thence across Chute;	
S.42°16'W.,	4.14
2003 OHWM Right Bank Cherokee Chute, thence upstream;	
S.89°07'W.,	2.08
S.52°15'W.,	1.89
S.89°07'W.,	1.51
S.79°39'W.,	2.30
S.51°04'W.,	3.08
AP, sections 26 and 27, N. 0°03'E.,	2.68
AP, sections 26 and 27, at 2003 OHWM Left Bank Cherokee Chute, place of beginning, containing	
<b>± 2.07 Acres</b>	
<b>Claim Area</b>	

2003 Arkansas Riverbed in Section 26

From AP, sections 26 and 27 at 2003 Right Bank OHWM, thence downstream in section 26;

N.84°52'E.,	1.51
N.79°13'E.,	16.57
S.76°42'E.,	2.36
N.78°43'E.,	8.16
N.66°48'E.,	7.62
N.20°29'E.,	1.95
N.68°52'E.,	6.84
N.65°48'E.,	7.91
N.62°39'E.,	6.39
N.88°18'E.,	4.99
N.60°37'E.,	10.75
N.24°51'E.,	4.90
N.57°29'E.,	10.14
N.52°04'E.,	0.14
continued on next column	
AP, sections 25 and 26, S.72°48'W.,	2.54
N. 0°03'E.,	11.82
1952 Left Bank	
N.72°30'W.,	7.152
2003 Left Bank OHWM, thence upstream;	
S.52°27'W.,	0.771
S.56°29'W.,	11.53
S.57°56'W.,	4.10
S.57°15'W.,	3.48
S.62°06'W.,	12.88
N.53°07'W.,	2.51
N.76°20'W.,	1.31
S.57°43'W.,	2.43
S.57°04'W.,	5.16
S.68°03'W.,	3.20
S.43°35'W.,	2.62
S.57°04'W.,	2.32
continued on next column	

**± 143.69 Acres**  
**Claim Area**

2003 Arkansas Riverbed in Section 25

From AP, sections 24 and 25, at 2003 Left Bank OHWM, thence upstream in section 25;

S.44°12'W.,	22.13
S.46°47'W.,	7.05
S.49°59'W.,	7.65
AP, sections 25 and 26, S. 0°03'W.,	7.41
1952 Left Bank	
S.72°30'E.,	11.717
2003 Right Bank OHWM, thence downstream;	
N.55°10'E.,	0.279
N.50°22'E.,	4.45
N.46°42'E.,	13.65
N.43°15'E.,	13.27
N.38°45'E.,	9.99
N.39°23'E.,	8.55
AP, sections 24 and 25, N.89°39'W.,	19.10
AP, sections 24 and 25, at 2003 Left Bank OHWM, place of beginning, containing	
<b>± 71.13 Acres</b>	
<b>Non-Claim Area</b>	

2003 Arkansas Riverbed in Section 25

From AP, sections 25 and 26, at 2003 Right Bank OHWM, thence downstream in section 25;

N.52°04'E.,	7.77
N.55°10'E.,	6.161
1952 Left Bank, thence	
N.72°30'W.,	11.717
sections 25 and 26, S. 0°03'W.,	11.82
AP, sections 25 and 26, at 2003 Right Bank OHWM, place of beginning, containing	
<b>± 6.48 Acres</b>	
<b>Claim Area</b>	

Reference should be made to sheet No. 1 for survey information.

UNITED STATES DEPARTMENT OF THE INTERIOR  
BUREAU OF LAND MANAGEMENT

Santa Fe, New Mexico

October 2, 2008

This plat, showing amended boundaries and areas is based upon the official records and, having been correctly prepared in accordance with the regulations of this Bureau is hereby accepted.

For the Director

*John A. Casias*

Chief Cadastral Surveyor for New Mexico

