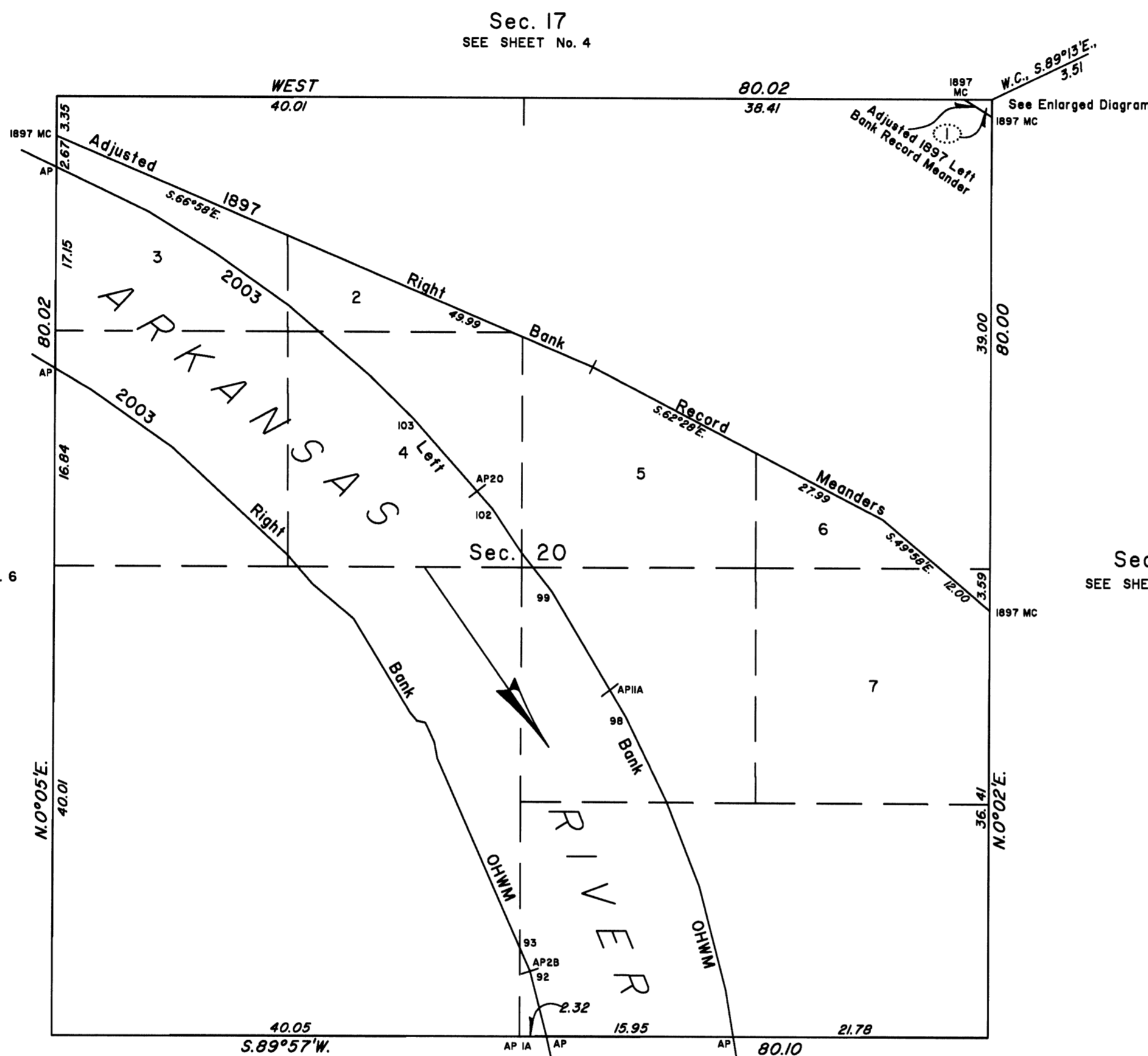


TOWNSHIP 10 NORTH, RANGE 25 EAST, OF THE INDIAN MERIDIAN, OKLAHOMA
DEPENDENT RESURVEY AND SURVEY

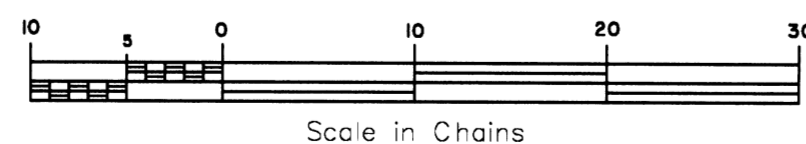


Sec. 19
SEE SHEET No. 6

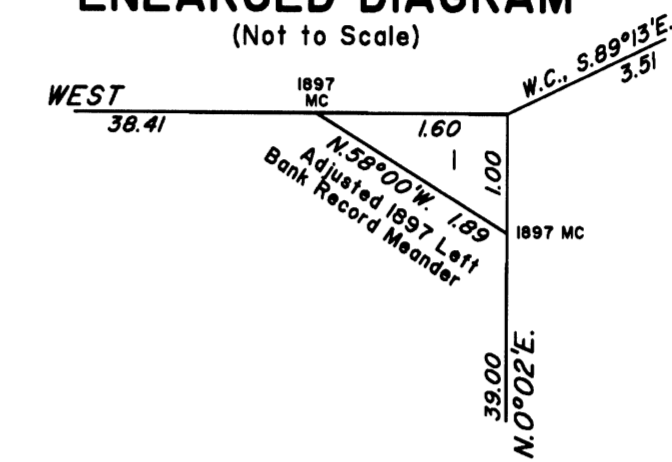


Sec. 29
SEE SHEET No. 13

2003
Arkansas Riverbed
in Section 20
Claim Area ±134.56 Acres



ENLARGED DIAGRAM
(Not to Scale)



2003 Arkansas River in Section 20
Left Bank OHWM as Digitized Right Bank OHWM as Digitized

<p>From AP, sections 20 and 29, at 2003 Left Bank OHWM, thence upstream in section 20;</p> <p>N. 9°20'W., 4.04 N.14°29'W., 9.11 N.21°20'W., 7.68 N.25°56'W., 8.11 98 N.30°46'W., 2.66 APIIA, Bdy. Historic Riverbed N.30°46'W., 9.76 99 N.38°21'W., 2.64 N.38°20'W., 1.55 N.33°46'W., 4.44 102 N.41°40'W., 1.38 AP20, Bdy. Historic Riverbed N.41°40'W., 8.91 103 N.45°32'W., 5.37 N.49°35'W., 5.60 N.49°35'W., 3.46 N.54°54'W., 7.76 N.58°26'W., 6.69 N.64°29'W., 8.75 AP, sections 19 and 20</p>	<p>From AP, sections 20 and 29, at 2003 Right Bank OHWM, thence upstream in section 20;</p> <p>N.14°31'W., 5.74 92 N.23°50'W., 0.08 AP2B, Bdy. Historic Riverbed N.23°50'W., 2.08 93 N.23°50'W., 17.63 N.10°37'W., 1.41 N.24°59'W., 1.84 N.77°41'W., 0.74 N.39°49'W., 0.90 N.31°26'W., 9.38 N.50°03'W., 4.58 N.41°11'W., 1.97 N.41°11'W., 1.25 N.47°16'W., 13.55 N.55°04'W., 8.48 N.59°17'W., 3.59 AP, sections 19 and 20</p>
--	---

Reference should be made to sheet No. 1 for survey and disclaimer information.

UNITED STATES DEPARTMENT OF THE INTERIOR
BUREAU OF LAND MANAGEMENT

Sante Fe, New Mexico April 30, 2010

This plat is strictly conformable to the approved field notes, and the survey, having been correctly executed in accordance with the requirements of law and the regulations of this Bureau, is hereby accepted.

For the Director

Chief Cadastral Surveyor for New Mexico