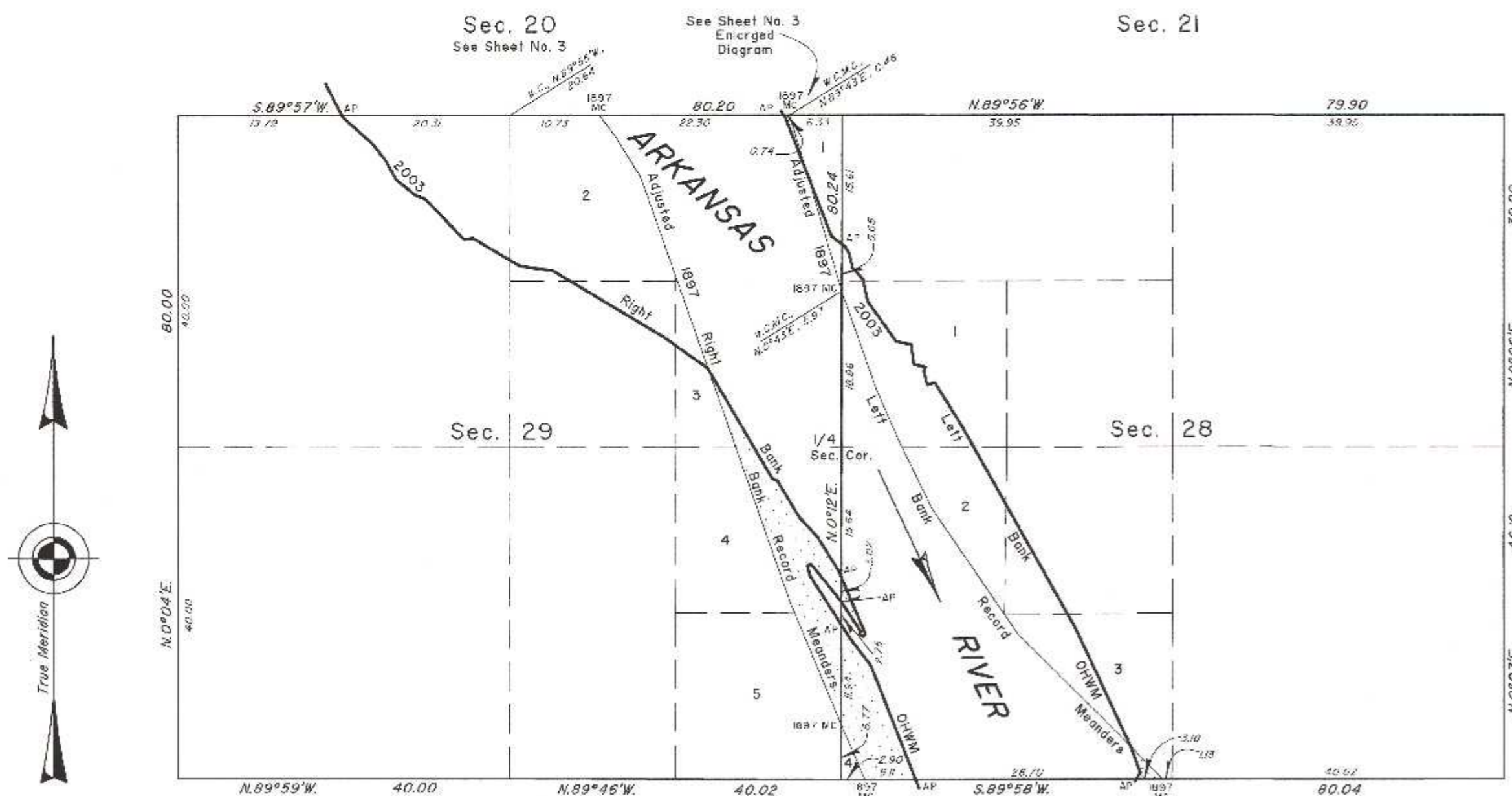


TOWNSHIP 12 NORTH, RANGE 21 EAST, OF THE INDIAN MERIDIAN, OKLAHOMA  
DEPENDENT RESURVEY AND SURVEY



2003 Arkansas River in Sections 28 and 29 Right Bank OHWM as Digitized

From AP, sections 28 and 33, at 2003 Right Bank OHWM, thence upstream through sections 28 and 29;

N.21°11'W.	14.68
N.37°40'W.	4.22
N.32°25'W.	1.99
AP Sections 28 and 29	
N.32°25'W.	7.13
N.13°27'W.	1.12
N.70°21'E.	0.50
S.38°49'E.	5.63
S.33°25'E.	0.165
AP Sections 28 and 29	
S.33°25'E.	4.325
S.29°45'W.	0.38
S.66°01'E.	0.49
N.41°03'E.	0.39
N.22°50'W.	7.45
AP Sections 28 and 29	
N.22°50'W.	0.73
N.31°40'W.	4.80
N.43°06'W.	3.31
N.31°12'W.	5.3
N.66°17'W.	0.62
N.30°22'W.	15.16
Adj. 1897 R.B. Meander	
N.30°22'W.	0.34
N.54°16'W.	6.55
N.59°10'W.	15.49
N.81°55'W.	4.10
N.59°21'W.	6.55
S.79°26'W.	1.05
N.43°22'W.	6.80
N.69°32'W.	1.25
N.5°19'W.	3.03
N.28°09'W.	2.56
N.37°59'W.	2.56
N.47°51'W.	4.91
N.27°16'W.	0.22

AP Sections 20 and 29

2003 Arkansas River in Sections 28 and 29 Left Bank OHWM as Digitized

From AP, sections 28 and 33, at 2003 Left Bank OHWM, thence upstream through sections 28 and 29;

N.30°18'E.	0.94
N.20°33'W.	3.27
Adj. 1897 L.B. Meander	
N.20°33'W.	0.04
N.24°52'W.	4.85
N.24°52'W.	4.42
N.24°52'W.	6.59
N.29°16'W.	27.86
N.31°55'W.	6.20
S.74°16'W.	0.96
N.14°48'W.	1.62
N.18°14'E.	0.57
N.74°46'W.	1.43
N.8°04'W.	2.41
N.79°11'W.	1.82
N.35°41'W.	5.97
N.11°24'W.	2.70
N.4°29'W.	1.85
N.14°11'W.	1.75
N.28°11'W.	0.99
N.52°41'W.	0.55
AP Sections 28 and 29	
N.52°41'W.	1.55
N.21°12'W.	8.34
Adj. 1897 L.B. Meander	
N.21°12'W.	7.05
N.34°55'W.	0.38

AP Sections 20 and 29

Adjusted 1897 Right Bank Record Meanders

From the 1897 MC, sections 28 and 33, thence;	
N.23°15'W.	7.35
1897 MC Secs. 28 and 29	
N.22°32'W.	16.02
N.19°18'W.	29.46
2003 Right Bank OHWM and Historic Bank	
N.19°18'W.	24.63
N.31°47'W.	6.01
N.37°31'W.	3.15
1897 MC Secs. 20 and 29	

Adjusted 1897 Left Bank Record Meanders

From the 1897 MC, sections 28 and 33, thence;	
N.44°51'W.	5.46
2003 Left Bank OHWM	
N.44°51'W.	5.84
Historic Bank	
N.44°51'W.	13.67
N.34°21'W.	17.99
N.25°50'W.	9.00
N.23°50'W.	7.00
N.19°20'W.	12.60
1897 MC Secs. 28 and 29	
N.16°24'W.	9.24
Historic Bank	
N.16°24'W.	5.74
2003 Left Bank OHWM	
N.16°24'W.	7.17
1897 MC Secs. 20 and 29	

Reference should be made to sheet No. 1 for survey and disclaimer information.

UNITED STATES DEPARTMENT OF THE INTERIOR  
BUREAU OF LAND MANAGEMENT

Sante Fe, New Mexico September 30, 2011

This plat is strictly conformable to the approved field notes, and the survey, having been correctly executed in accordance with the requirements of law and the regulations of this Bureau, is hereby accepted.

For the Director

Chief Cadastral Surveyor for New Mexico

2003 Arkansas Riverbed in Section 29	2003 Arkansas Riverbed in Section 28
Claim Area ±140.74 Acres	Claim Area ±116.58 Acres
1897 Arkansas Riverbed	1897 Arkansas Riverbed
Claim Area ±14.34 Acres	Claim Area ±9.04 Acres

1897 Riverbed Claim Area

