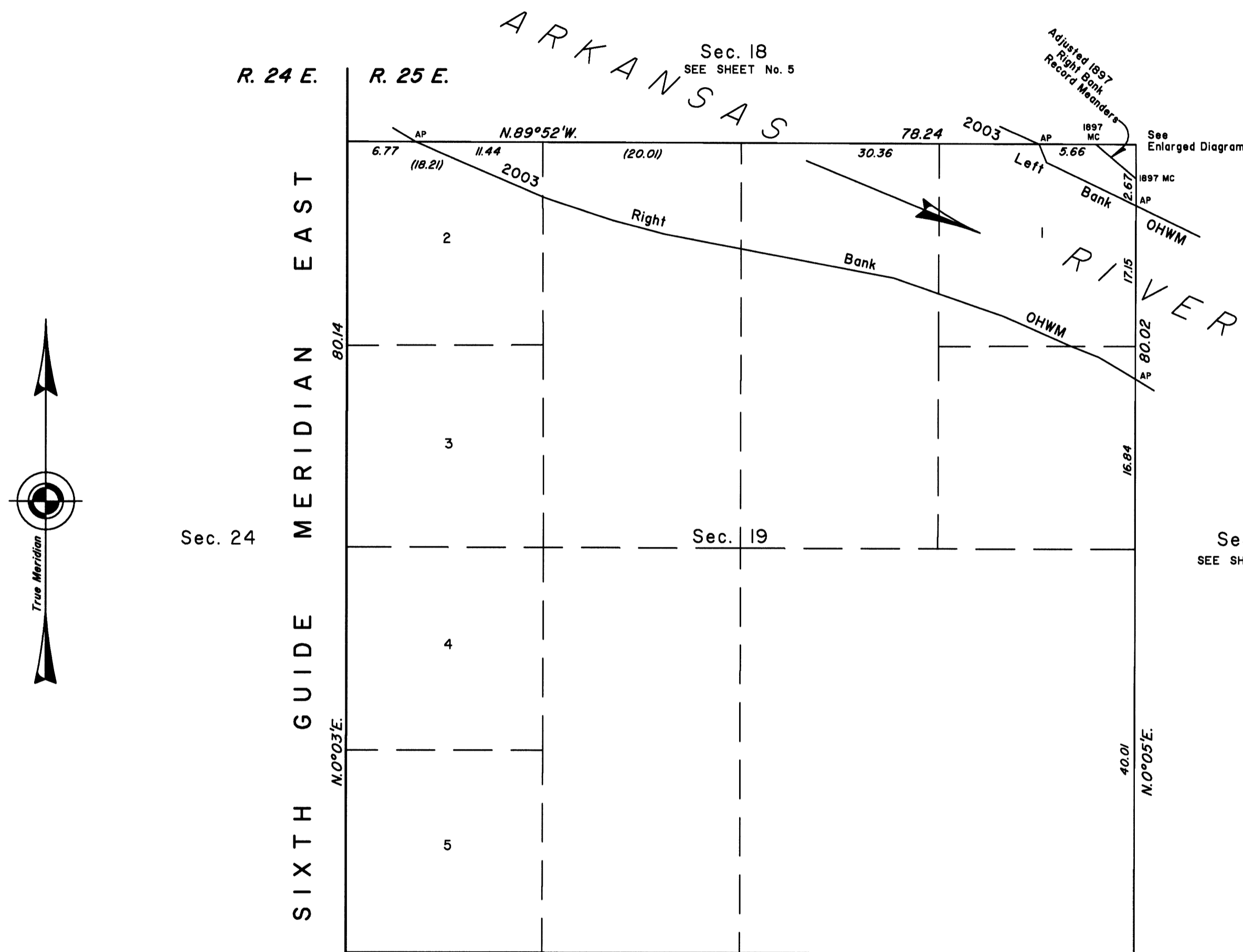
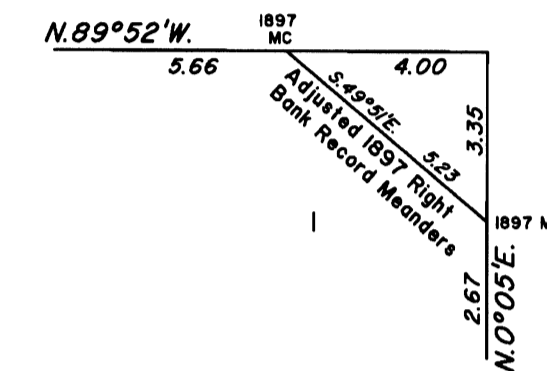


TOWNSHIP 10 NORTH, RANGE 25 EAST, OF THE INDIAN MERIDIAN, OKLAHOMA

DEPENDENT RESURVEY AND SURVEY



ENLARGED DIAGRAM  
(Not to Scale)



2003 Arkansas River  
in Section 19  
Left Bank OHWM as Digitized

From AP, sections 19 and 20,  
at 2003 Left Bank OHWM,  
thence upstream in section 19;  
N.64°29'W., 9.86  
N.22°27'W., 1.96  
AP, sections 18 and 19

2003 Arkansas River  
in Section 19  
Right Bank OHWM as Digitized

From AP, sections 19 and 20,  
at 2003 Right Bank OHWM,  
thence upstream in section 19;  
N.59°17'W., 4.30  
N.69°04'W., 2.71  
N.66°17'W., 7.60  
N.70°55'W., 6.64  
N.70°56'W., 4.77  
N.79°14'W., 15.37  
N.79°14'W., 7.73  
N.75°20'W., 5.36  
N.71°56'W., 7.01  
N.66°52'W., 9.80  
N.66°21'W., 4.27  
AP, sections 18 and 19

Reference should be made to sheet No. 1 for survey and disclaimer information.

UNITED STATES DEPARTMENT OF THE INTERIOR  
BUREAU OF LAND MANAGEMENT

Sante Fe, New Mexico

April 30, 2010

This plat is strictly conformable to the approved field notes, and the survey, having been correctly executed in accordance with the requirements of law and the regulations of this Bureau, is hereby accepted.

For the Director

*Robert A. Casias*

Chief Cadastral Surveyor for New Mexico

2003  
Arkansas Riverbed  
in Section 19  
Claim Area ±76.74 Acres

