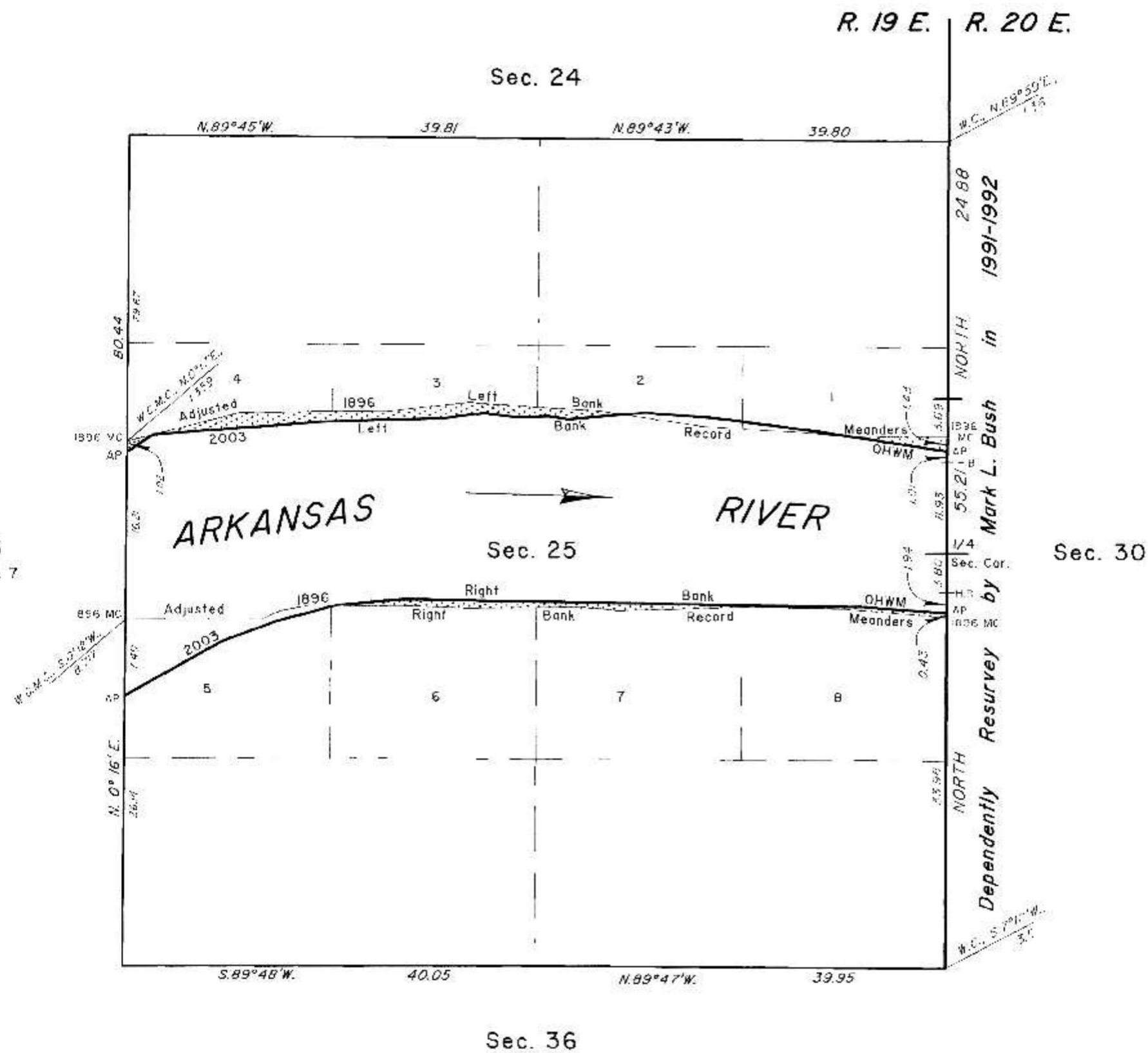
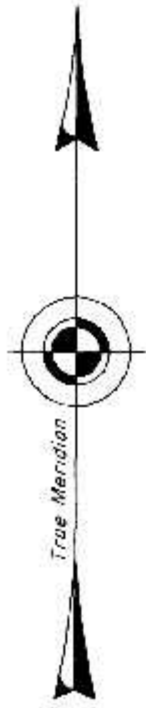


TOWNSHIP 15 NORTH, RANGE 19 EAST, OF THE INDIAN MERIDIAN, OKLAHOMA
DEPENDENT RESURVEY AND SURVEY



2003 Arkansas River in Sections 25 Left Bank OHWM as Digitized

From AP. sections 25 and 30, of 2003 Left Bank OHWM, thence upstream in section 25:

N.81°32'W.,	9.89
Adj. 1896 L.B. Meander	
N.61°32'W.,	2.99
N.82°35'W.,	10.43
N.86°18'W.,	6.39
S.85°08'W.,	2.08
Adj. 1896 L.B. Meander	
S.85°09'W.,	5.41
N.82°14'W.,	1.97
S.87°45'W.,	2.93
N.82°51'W.,	3.28
S.82°17'W.,	3.98
S.88°14'W.,	11.53
S.85°28'W.,	16.73
Adj. 1896 L.B. Meander	
S.56°39'W.,	3.06
AP Sections 25 and 26	

2003 Arkansas River in Section 25 Right Bank OHWM as Digitized

From AP. sections 25 and 30, of 2003 Right Bank OHWM, thence upstream in section 25:

N.86°03'W.,	7.99
N.89°13'W.,	44.86
S.84°36'W.,	6.48
Adj. 1896 R.B. Meander	
S.75°12'W.,	6.20
S.69°38'W.,	5.54
S.60°38'W.,	10.78
AP Sections 25 and 26	

Adjusted 1896 Left Bank Record Meanders

From the 1896 MC, sections 25 and 30, E. Bdy. of Tp., thence:

N.89°52'W.,	9.79
2003 Left Bank OHWM	
N.88°52'W.,	0.92
N.83°42'W.,	2.91
N.86°32'W.,	5.83
N.86°17'W.,	4.86
N.81°54'W.,	7.33
2003 Left Bank OHWM	
N.81°54'W.,	2.38
N.86°47'W.,	4.86
N.85°30'W.,	2.92
N.80°32'W.,	4.86
S.83°43'W.,	7.80
S.89°21'W.,	6.81
S.88°51'W.,	7.79
2003 Left Bank OHWM	
S.75°32'W.,	2.63
1896 MC Secs. 25 and 26.	

Adjusted 1896 Right Bank Record Meanders

From the 1896 MC, sections 25 and 30, E. Bdy. of Tp., thence:

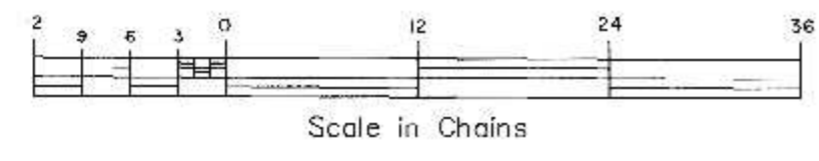
N.85°36'W.,	9.99
N.88°22'W.,	8.99
S.87°38'W.,	7.99
S.88°53'W.,	4.99
N.85°21'W.,	4.00
S.89°08'W.,	9.99
N.88°22'W.,	6.99
N.89°52'W.,	6.41
2003 Right Bank OHWM	
N.89°52'W.,	2.58
S.79°22'W.,	2.99
S.66°21'W.,	2.00
S.89°47'W.,	7.01
Historic Bank	
S.89°47'W.,	6.17
1896 MC Secs. 25 and 26.	

Sec. 26
See Sheet No. 7

Sec. 30

2003 Arkansas Riverbed in Section 25
Claim Area ± 146.25 Acres
1896 Arkansas Riverbed
Claim Area ± 7.80 Acres

1896 Riverbed Claim Area



Reference should be made to sheet No. 1 for survey and disclaimer information.

UNITED STATES DEPARTMENT OF THE INTERIOR
BUREAU OF LAND MANAGEMENT

Sante Fe, New Mexico December 19, 2012

This plat is strictly conformable to the approved field notes, and the survey, having been correctly executed in accordance with the requirements of law and the regulations of this Bureau, is hereby accepted.

For the Director

Chief Cadastral Surveyor for New Mexico