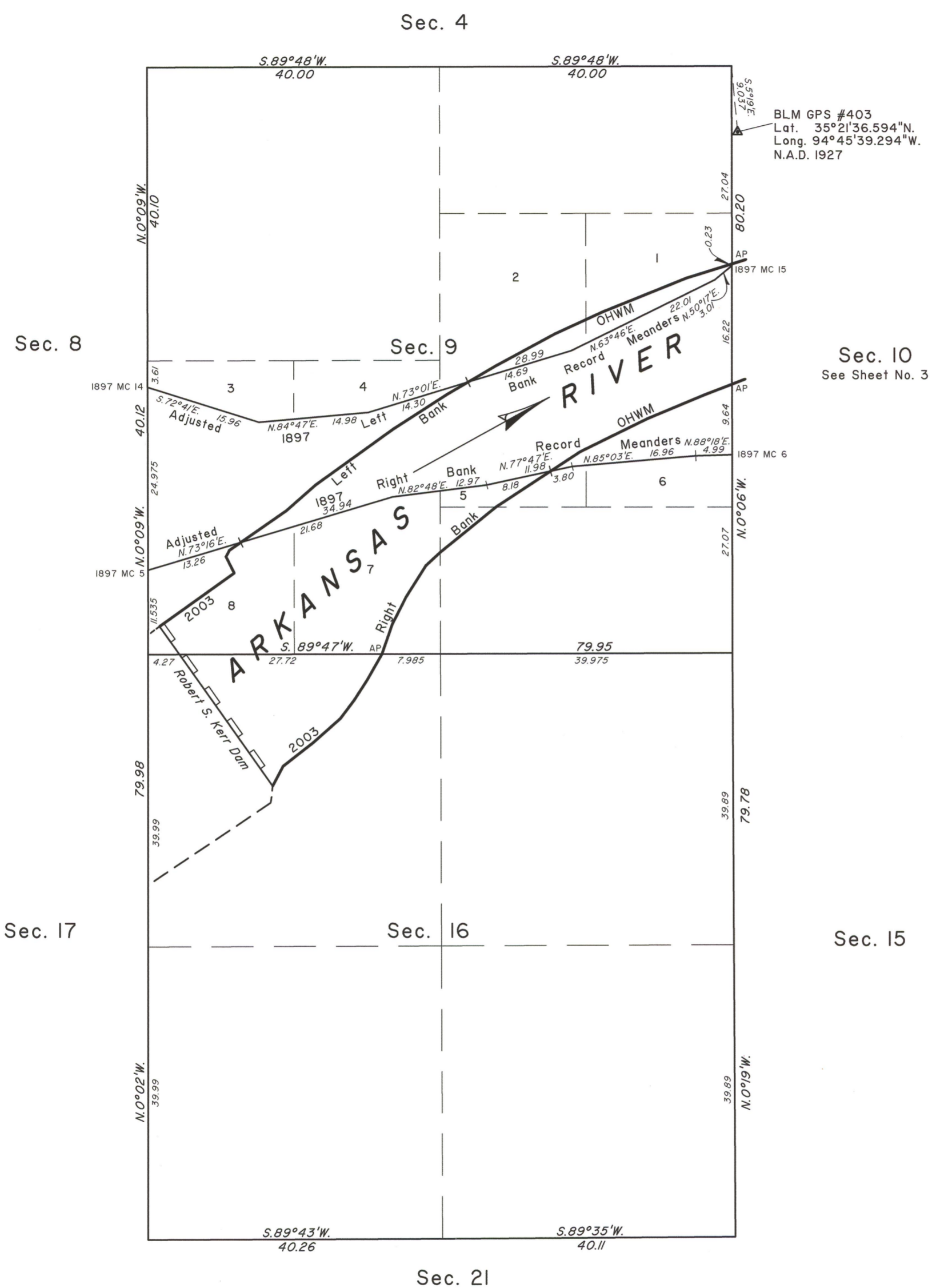


TOWNSHIP 10 NORTH, RANGE 24 EAST, OF THE INDIAN MERIDIAN, OKLAHOMA
DEPENDENT RESURVEY AND SURVEY



2003 Arkansas River
in Section 9
Left Bank OHWM as Digitized

From AP, sections 9 and 10,
at 2003 Left Bank OHWM,
thence upstream in section 9;

S.72°47'W.	6.51
S.68°05'W.	12.34
S.65°21'W.	2.55
S.65°21'W.	4.68
S.61°30'W.	9.27
S.59°32'W.	4.32
Adj: 1897 L. B. Record Meanders	
S.59°32'W.	3.31
S.57°04'W.	8.83
S.54°15'W.	13.04
S.48°40'W.	5.31
S.55°12'W.	7.61
Adj: 1897 R. B. Record Meanders	
S.55°12'W.	1.89
S.28°09'W.	0.98
S.26°47'E.	2.49
S.54°20'W.	12.58
Robert S. Kerr Dam	

2003 Arkansas River
in Section 9
Right Bank OHWM as Digitized

From AP, sections 9 and 10,
at 2003 Right Bank OHWM,
thence upstream in section 9;

S.68°49'W.	4.07
S.67°19'W.	8.46
S.63°52'W.	10.23
S.59°33'W.	5.57
Adj: 1897 R. B. Record Meanders	
S.59°33'W.	0.02
S.54°55'W.	8.24
S.50°51'W.	4.55
S.51°05'W.	5.23
S.47°17'W.	2.68
S.32°09'W.	5.08
S.26°48'W.	4.21
S.18°54'W.	4.28
AP sections 9 and 16	

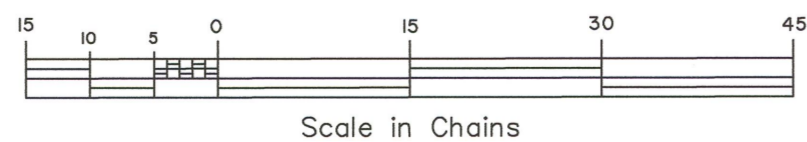
2003 Arkansas River
in Section 16
Right Bank OHWM as Digitized

From AP, sections 9 and 16,
at 2003 Right Bank OHWM,
thence upstream in section 16;

S.29°36'W.	4.09
S.32°49'W.	3.31
S.36°48'W.	3.14
S.48°30'W.	4.98
S.51°53'W.	5.20
S.27°44'W.	3.07
Robert S. Kerr Dam	

2003 Arkansas Riverbed in Section 9
Claim Area ± 143.41 Acres

2003 Arkansas Riverbed in Section 16
Claim Area ± 26.08 Acres



Reference should be made to sheet No. 1 for survey and disclaimer information.

UNITED STATES DEPARTMENT OF THE INTERIOR
BUREAU OF LAND MANAGEMENT

Sante Fe, New Mexico July 22, 2010

This plat is strictly conformable to the approved field notes, and the survey, having been correctly executed in accordance with the requirements of law and the regulations of this Bureau, is hereby accepted.

For the Director

John A. Casiano

Chief Cadastral Surveyor for New Mexico