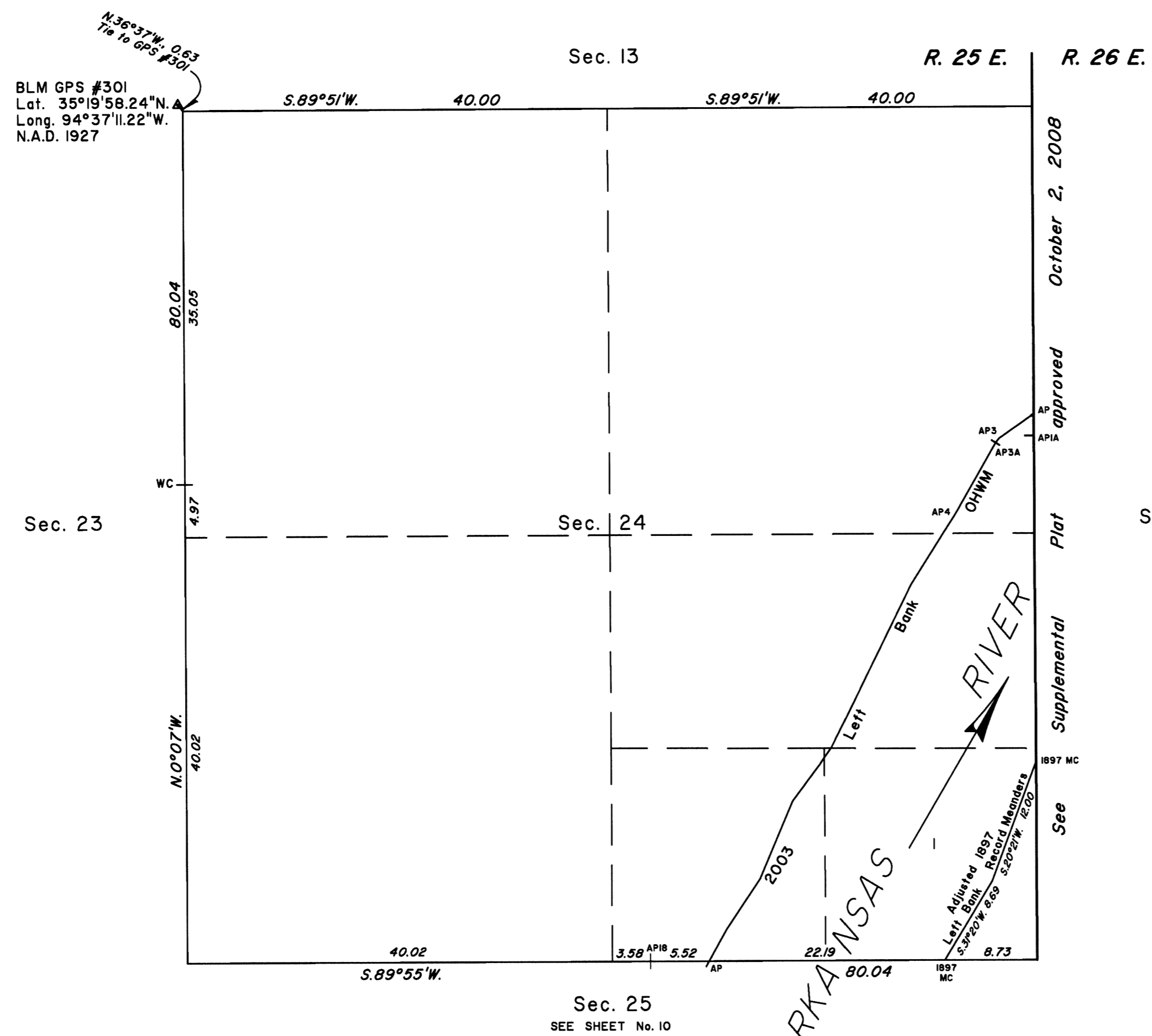
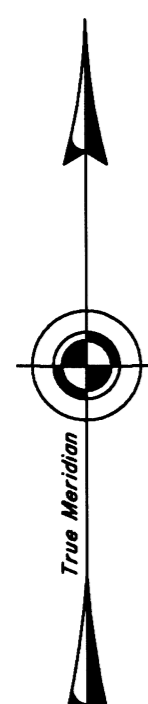


TOWNSHIP 10 NORTH, RANGE 25 EAST, OF THE INDIAN MERIDIAN, OKLAHOMA  
DEPENDENT RESURVEY AND SURVEY



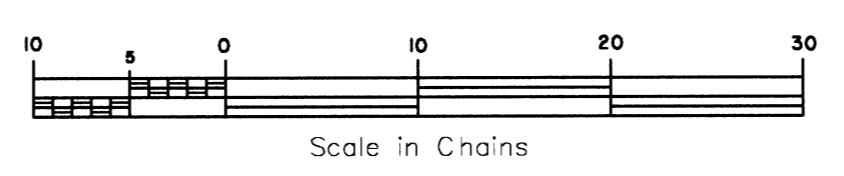
2003 Arkansas River in Section 24  
Left Bank OHWM as Digitized

From AP, sections 19 and 24,  
of 2003 Left Bank OHWM,  
thence upstream in section 24;

S.55°07'W.,	4.01
S.38°53'W.,	0.53
AP3 S.29°57'W.,	0.22
AP3A, Bdy. Historic Riverbed	
S.29°57'W.,	7.50
AP4 S.32°45'W.,	2.14
S.32°34'W.,	5.65
S.26°18'W.,	17.09
S.34°52'W.,	1.06
S.34°52'W.,	0.87
S.36°46'W.,	4.26
S.22°52'W.,	7.90
S.33°46'W.,	5.66
S.29°10'W.,	3.46

AP, sections 24 and 25

2003  
Arkansas Riverbed  
in Section 24  
Claim Area ± 84.78 Acres



Reference should be made to sheet No. 1 for survey and disclaimer information.

UNITED STATES DEPARTMENT OF THE INTERIOR  
BUREAU OF LAND MANAGEMENT

Sante Fe, New Mexico April 30, 2010

This plat is strictly conformable to the approved field notes, and the survey, having been correctly executed in accordance with the requirements of law and the regulations of this Bureau, is hereby accepted.

For the Director

*Robert A. Casias*

Chief Cadastral Surveyor for New Mexico