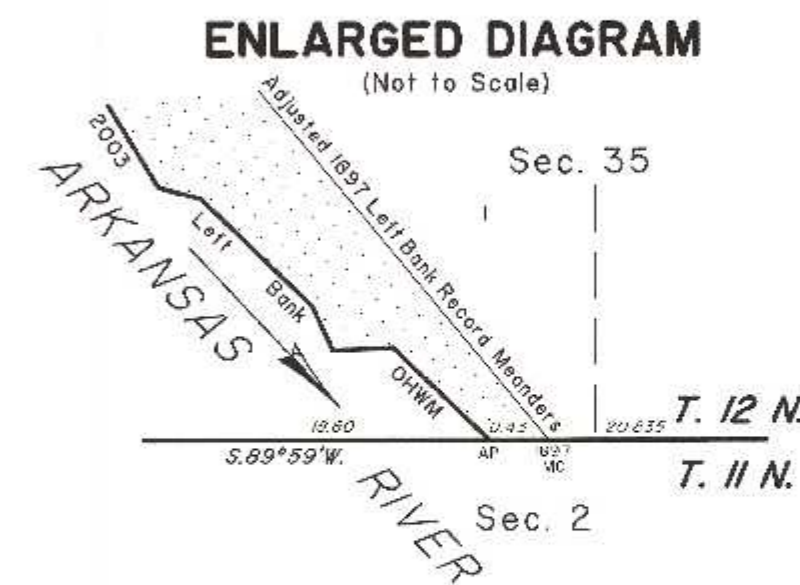
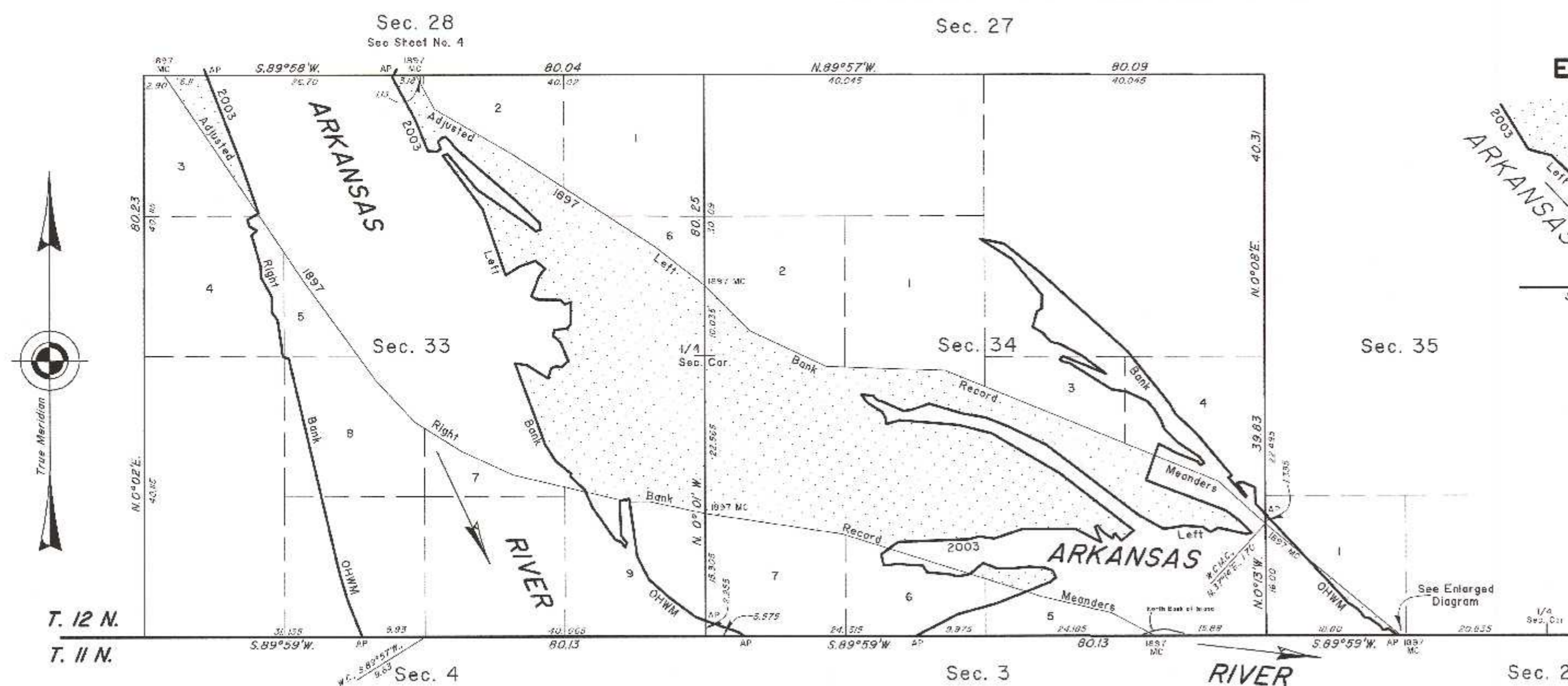


TOWNSHIP 12 NORTH, RANGE 21 EAST, OF THE INDIAN MERIDIAN, OKLAHOMA
DEPENDENT RESURVEY AND SURVEY



Adjusted 1897
Right Bank
Record Meanders
From the 1897 MC, sections 3
and 34, thence:

| | |
|-------------------------|-------------------|
| N.62°02'W. | 7.02 |
| N.77°00'W. | 10.02 |
| N.72°30'W. | 2.507 |
| 2003 Left Bank OHWM | N.72°30'W. 8.436 |
| 2003 Left Bank OHWM | N.72°30'W. 12.124 |
| 2003 Left Bank OHWM | N.72°30'W. 7.003 |
| 1897 MC Secs. 33 and 34 | N.89°29'W. 19.84 |
| 2003 Left Bank OHWM | N.77°58'W. 6.01 |
| 2003 Left Bank OHWM | N.89°57'W. 2.95 |
| 2003 Left Bank OHWM | N.89°57'W. 0.05 |
| 2003 Left Bank OHWM | N.76°58'W. 1.084 |
| 2003 Left Bank OHWM | N.76°58'W. 5.32 |
| 2003 Left Bank OHWM | N.76°58'W. 10.626 |
| 2003 Left Bank OHWM | N.64°59'W. 8.01 |
| 2003 Left Bank OHWM | N.56°00'W. 8.01 |
| 2003 Left Bank OHWM | N.43°02'W. 8.01 |
| 2003 Left Bank OHWM | N.36°02'W. 13.63 |
| Historic Bank | N.36°02'W. 3.20 |
| 2003 Right Bank OHWM | N.34°03'W. 12.235 |
| 2003 Right Bank OHWM | N.34°03'W. 23.825 |
| 1897 MC Secs. 28 and 33 | |

2003 Arkansas River in Section 33 Right Bank OHWM as Digitized

| | |
|---|------------------|
| From AP, sections 4 and 35, at 2003 Right Bank OHWM, thence upstream in section 33: | |
| N.22°04'W. | 5.56 |
| N.16°29'W. | 3.99 |
| N.13°14'W. | 31.59 |
| N.6°20'W. | 0.88 |
| N.8°09'W. | 5.23 |
| N.35°57'W. | 1.41 |
| N.0°07'E. | 2.26 |
| N.29°22'W. | 3.18 |
| N.2°27'W. | 1.68 |
| N.15°42'W. | 4.49 |
| N.45°59'E. | 0.99 |
| N.62°22'W. | 1.20 |
| N.15°42'W. | 1.02 |
| N.60°01'E. | 1.681 |
| Adj. 1897 R.B. Meander | N.60°01'E. 0.149 |
| N.19°12'W. | 7.24 |
| N.2°11'W. | 13.76 |
| AP Sections 28 and 33 | |

2003 Arkansas River in Sections 33 and 34 Left Bank OHWM as Digitized

| | |
|--|-------|
| From AP, sections 3 and 34, at 2003 Left Bank OHWM, thence upstream in sections 33 and 34: | |
| N.54°25'W. | 0.94 |
| N.70°29'W. | 5.108 |
| N.70°29'W. | 1.432 |
| N.53°43'W. | 4.56 |
| N.48°21'W. | 4.05 |
| N.27°05'W. | 3.68 |
| N.7°49'W. | 7.896 |
| N.7°49'W. | 0.494 |
| S.76°46'W. | 1.068 |
| S.76°46'W. | 0.342 |
| S.2°53'E. | 4.99 |
| S.39°13'E. | 1.26 |
| S.17°53'W. | 0.74 |
| N.37°46'W. | 0.97 |
| N.69°21'W. | 0.93 |
| N.34°54'W. | 5.60 |
| N.24°03'W. | 2.467 |
| N.24°03'W. | 0.343 |
| N.47°12'W. | 2.79 |
| N.22°07'E. | 0.39 |
| N.50°26'W. | 2.90 |
| N.31°37'W. | 2.72 |
| N.20°25'W. | 12.39 |
| S.80°38'E. | 1.76 |
| S.57°24'E. | 3.55 |
| N.16°55'E. | 1.52 |
| N.67°10'E. | 0.75 |
| S.82°23'E. | 0.77 |
| N.49°44'E. | 1.31 |
| N.22°04'W. | 2.96 |
| AP Sections 28 and 33 | |

2003 Arkansas River in Sections 34 and 35 Left Bank OHWM as Digitized

| | |
|--|------------------|
| From AP, sections 2 and 35, at 2003 Left Bank OHWM, thence upstream in sections 34 and 35: | |
| N.54°51'W. | 1.65 |
| S.78°56'W. | 0.79 |
| N.33°12'W. | 0.64 |
| N.54°39'W. | 2.00 |
| N.84°21'W. | 0.57 |
| N.39°59'W. | 1.63 |
| N.58°17'W. | 1.59 |
| N.42°54'W. | 6.73 |
| N.42°54'W. | 2.70 |
| N.42°54'W. | 2.93 |
| N.42°54'W. | 4.97 |
| N.42°54'W. | 2.06 |
| N.1°18'W. | 2.31 |
| N.67°41'W. | 1.88 |
| S.86°10'W. | 0.86 |
| S.35°31'E. | 2.31 |
| S.28°10'W. | 0.24 |
| N.41°16'W. | 3.75 |
| N.58°22'E. | 0.60 |
| N.39°52'W. | 7.68 |
| N.46°57'W. | 4.28 |
| N.28°57'W. | 1.69 |
| N.38°46'W. | 9.56 |
| N.47°51'W. | 16.81 |
| N.5°06'W. | 6.53 |
| N.78°12'W. | 3.51 |
| S.57°07'E. | 5.40 |
| S.40°08'E. | 6.68 |
| S.1°29'W. | 1.96 |
| S.60°32'W. | 0.73 |
| Continued: | S.16°25'W. 2.34 |
| Continued: | S.57°18'E. 1.63 |
| Continued: | S.43°33'E. 1.75 |
| Continued: | S.75°57'E. 1.30 |
| Continued: | S.62°27'E. 3.45 |
| Continued: | S.53°19'E. 4.43 |
| Continued: | N.68°08'W. 6.65 |
| Continued: | S.42°10'W. 0.65 |
| Continued: | S.60°04'E. 0.70 |
| Continued: | S.84°56'E. 0.65 |
| Continued: | S.57°53'E. 7.25 |
| Continued: | S.82°03'E. 2.10 |
| Continued: | S.65°28'E. 3.24 |
| Continued: | S.40°31'E. 1.60 |
| Continued: | S.32°04'E. 1.81 |
| Continued: | S.17°57'E. 1.21 |
| Continued: | S.45°16'E. 2.89 |
| Continued: | S.53°34'E. 3.77 |
| Continued: | S.37°10'E. 1.01 |
| Continued: | S.6°09'W. 0.62 |
| Continued: | N.37°38'W. 0.69 |
| Continued: | N.68°09'W. 3.19 |
| Continued: | N.62°38'W. 2.89 |
| Continued: | S.19°13'W. 1.74 |
| Continued: | S.19°13'W. 3.74 |
| Continued: | S.69°07'E. 12.08 |
| Continued: | S.54°24'E. 2.22 |
| Continued: | S.45°13'E. 2.73 |
| Continued: | S.75°57'W. 0.77 |
| Continued: | N.77°39'W. 4.11 |
| Continued: | S.53°34'W. 1.27 |
| Continued: | N.56°49'W. 1.27 |
| Continued: | N.86°34'W. 2.68 |
| Continued: | S.81°02'W. 2.92 |
| Continued: | N.61°17'W. 4.09 |
| Continued: | N.82°34'W. 16.53 |
| Continued: | N.64°30'W. 6.01 |
| Continued: | N.68°14'W. 3.49 |
| Continued: | N.79°50'W. 3.26 |
| Continued: | N.73°50'W. 5.12 |
| Continued: | S.71°06'W. 2.60 |
| Continued: | S.81°40'W. 1.17 |
| Continued: | N.66°05'W. 3.19 |
| Continued: | N.72°22'W. 1.02 |
| Continued: | N.40°18'W. 0.81 |
| Continued: | N.96°50'W. 1.73 |
| Continued: | S.40°47'E. 1.59 |
| Continued: | S.57°49'E. 2.36 |
| Continued: | S.29°02'E. 1.07 |
| Continued: | S.3°41'E. 0.79 |
| Continued: | N.73°52'E. 2.04 |
| Continued: | S.84°58'E. 6.47 |
| Continued: | S.75°44'E. 4.85 |
| Continued: | S.59°37'E. 11.34 |
| Continued: | S.52°11'E. 13.21 |
| Continued: | S.25°06'E. 11.4 |
| Continued: | S.50°12'W. 2.26 |
| Continued: | S.54°30'W. 1.09 |
| Continued: | N.41°48'W. 1.33 |
| Continued: | S.61°09'W. 0.31 |
| Continued: | S.9°50'W. 0.55 |
| Continued: | N.57°31'W. 1.47 |
| Continued: | N.41°28'W. 1.47 |
| Continued: | S.49°15'W. 0.39 |
| Continued: | S.22°01'E. 2.29 |
| Continued: | N.67°02'W. 0.94 |
| Continued: | N.62°13'W. 3.17 |

2003 Arkansas Riverbed in Section 33
Claim Area ± 295.18 Acres
1897 Arkansas Riverbed
Claim Area ± 110.65 Acres

2003 Arkansas Riverbed in Section 34
Claim Area ± 98.81 Acres (Includes Island)
1897 Arkansas Riverbed
Claim Area ± 138.41 Acres

2003 Arkansas Riverbed in Section 35
Claim Area ± 14.43 Acres
1897 Arkansas Riverbed
Claim Area ± 1.32 Acres

1897 Riverbed Claim Area

Reference should be made to sheet No. 1 for survey and disclaimer information.

UNITED STATES DEPARTMENT OF THE INTERIOR
BUREAU OF LAND MANAGEMENT

Sante Fe, New Mexico September 30, 2011

This plat is strictly conformable to the approved field notes, and the survey, having been correctly executed in accordance with the requirements of law and the regulations of this Bureau, is hereby accepted.

For the Director

John A. Casard

Chief Cadastral Surveyor for New Mexico

