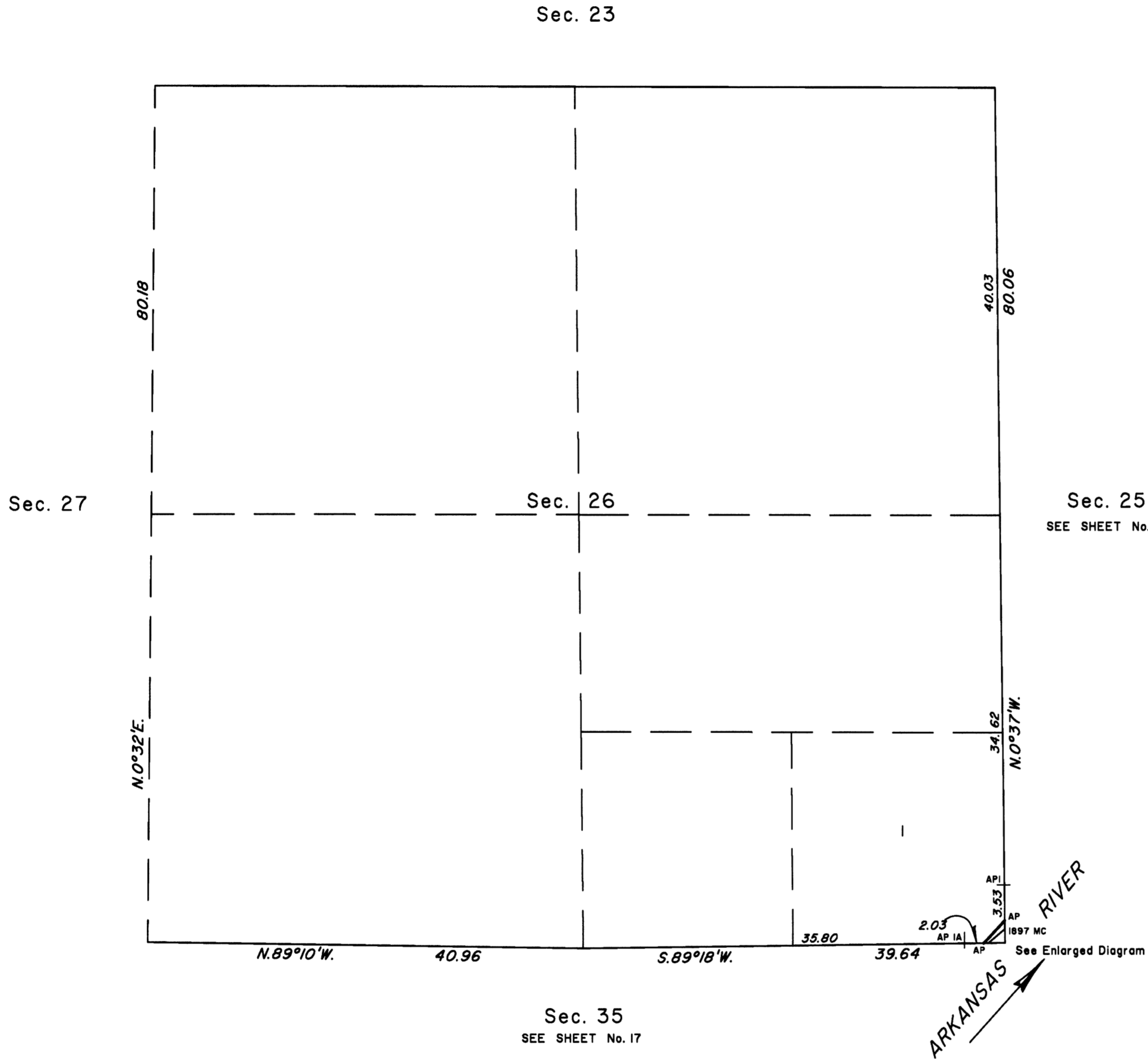


TOWNSHIP 10 NORTH, RANGE 25 EAST, OF THE INDIAN MERIDIAN, OKLAHOMA
DEPENDENT RESURVEY AND SURVEY

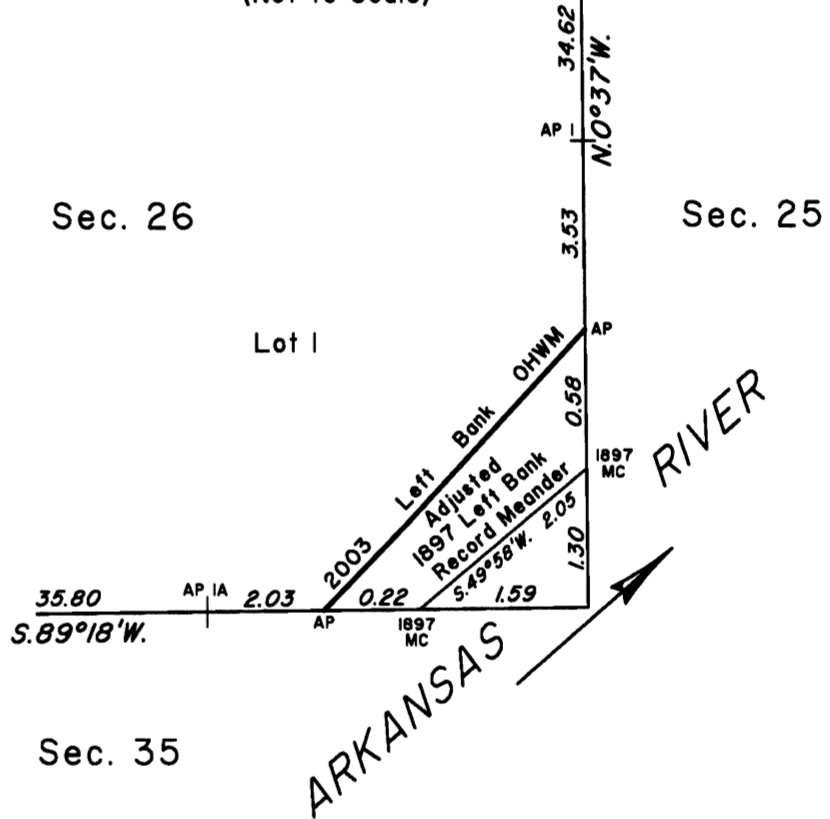


2003
Arkansas Riverbed
in Section 26
Claim Area ±0.17 Acres

2003 Arkansas River
in Section 26
Left Bank OHWM as Digitized

From AP, sections 25 and 26,
at 2003 Left Bank OHWM,
thence upstream in section 26:
S.42°36'W., 1.55
S.44°03'W., 1.07
AP, sections 26 and 35

ENLARGED DIAGRAM
(Not to Scale)



Reference should be made to sheet No. 1 for survey and disclaimer information.

UNITED STATES DEPARTMENT OF THE INTERIOR
BUREAU OF LAND MANAGEMENT

Sante Fe, New Mexico April 30, 2010

This plat is strictly conformable to the approved field notes, and the survey, having been correctly executed in accordance with the requirements of law and the regulations of this Bureau, is hereby accepted.

For the Director

Robert A. Casias

Chief Cadastral Surveyor for New Mexico

