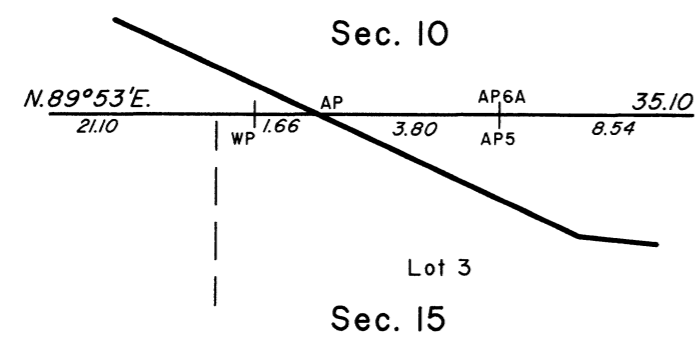
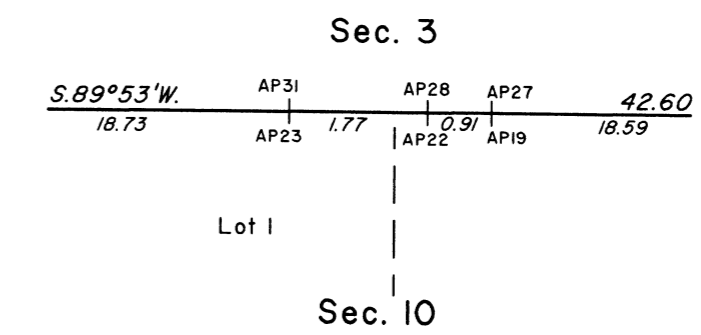


TOWNSHIP 9 NORTH, RANGE 25 EAST, OF THE INDIAN MERIDIAN, OKLAHOMA
DEPENDENT RESURVEY AND SURVEY

ENLARGED DIAGRAM No. 1
(Not to Scale)



ENLARGED DIAGRAM No. 2
(Not to Scale)



Left Bank of Slough of 2003
Arkansas River in Section 10

From AP, sections 9 and 10 at 2003 OHWM, along Left Bank of Slough, thence E'y in section 10;

- S.25°48'E. 15.23
- S.62°39'E. 1.97
- S.16°56'E. 2.28
- S.53°05'E. 2.87
- S.89°22'E. 1.81
- S.3°25'E. 0.99
- S.58°57'E. 0.95
- N.38°20'E. 0.72
- N.19°23'W. 0.80
- N.80°47'E. 1.48
- S.37°44'E. 8.81
- S.51°21'W. 1.40
- S. 9°29'W. 1.94
- N.86°51'E. 5.24
- N.76°10'E. 1.81
- S.71°43'E. 5.88

Adj. 1897 R. B. Record Meanders

- S.71°43'E. 5.42
- S.83°27'E. 6.55
- N.79°22'E. 19.15
- N.73°16'E. 9.62
- N.65°59'E. 8.51

AP sections 10 and 11

Right Bank of Slough of 2003
Arkansas River
in Sections 10 and 15

From AP, sections 10 and 11 at 2003 OHWM, along Right Bank of Slough, thence W'y in section 10;

- S.68°08'W. 4.57
- S.77°21'W. 20.98
- S.88°37'W. 13.14
- N.83°53'W. 1.65

Adj. 1897 R. B. Record Meanders

- N.83°53'W. 8.29
- N.84°15'W. 2.28
- N.65°17'W. 8.16

AP sections 10 and 15, at 2003 OHWM, along Right Bank of Slough, thence NW'y in section 10;

- N.65°17'W. 6.64
- N.52°06'W. 11.43
- N.33°32'W. 4.54
- N.23°18'W. 13.19

AP sections 9 and 10

Slough of 2003
Arkansas River in Section 9

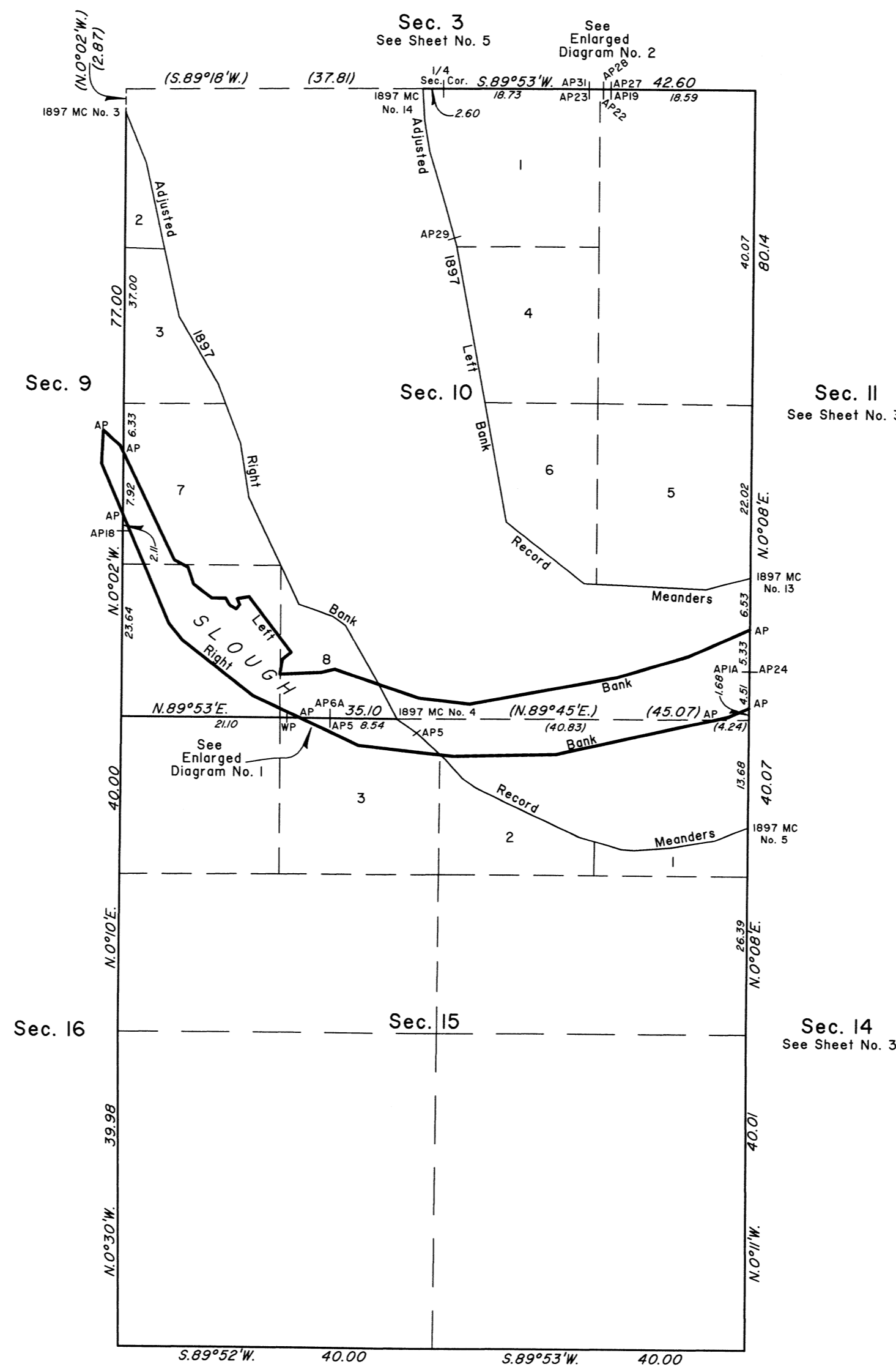
AP sections 9 and 10, at 2003 OHWM, along Right Bank of Slough, thence NW'y in section 9;

- N.23°18'W. 7.00
- N. 2°37'E. 4.27

AP, end of Slough in section 9, continue SE'y on 2003 OHWM, begin Left Bank of Slough in section 9;

- S.59°24'E. 1.99
- S.25°48'E. 1.96

AP sections 9 and 10



Adjusted 1897
Left Bank
Record Meanders

From 1897 MC No. 13, sections 10 and 11, thence;

- S. 75°07'W. 5.86
- N.87°44'W. 15.62
- N.52°12'W. 12.75
- N.10°40'W. 35.81
- N.16°12'W. 0.99
- Bdy. Historic Riverbed
- N.16°12'W. 4.17
- N.16°43'W. 7.34
- N. 9°40'W. 3.98
- N. 3°39'W. 3.99

1897 MC No. 14, Sections 3 and 10

Adjusted 1897
Right Bank
Record Meanders

From 1897 MC No. 3, sections 9 and 10, thence;

- S.22°19'E. 7.00
- S.12°34'E. 19.98
- S.30°34'E. 10.00
- S.21°04'E. 8.00
- S. 9°03'E. 6.99
- S.25°34'E. 14.99
- S.71°04'E. 4.60
- S.55°49'E. 1.90
- S.30°04'E. 8.00
- S.28°19'E. 0.65

Left Bank of Slough, 2003 OHWM

S.28°19'E. 5.00

1897 MC No. 4, Sections 10 and 15

S.55°00'E. 1.74

Bdy. Historic Riverbed

S.55°00'E. 1.36

S.47°45'E. 4.13

Right Bank of Slough, 2003 OHWM

S.47°45'E. 0.76

S.42°14'E. 3.29

S.55°15'E. 2.00

S.64°31'E. 1.40

S.64°46'E. 4.20

S.65°16'E. 9.20

S.74°31'E. 5.60

S.86°15'E. 1.70

N.85°45'E. 4.71

N.80°16'E. 5.61

N.68°18'E. 4.61

1897 MC No. 5, Sections 14 and 15

Reference should be made to sheet No. 1 for survey and disclaimer information.

UNITED STATES DEPARTMENT OF THE INTERIOR
BUREAU OF LAND MANAGEMENT

Sante Fe, New Mexico

May 26, 2010

This plat is strictly conformable to the approved field notes, and the survey, having been correctly executed in accordance with the requirements of law and the regulations of this Bureau, is hereby accepted.

For the Director

Robert A. Casias

Chief Cadastral Surveyor for New Mexico

2003 Arkansas Riverbed
in Section 9

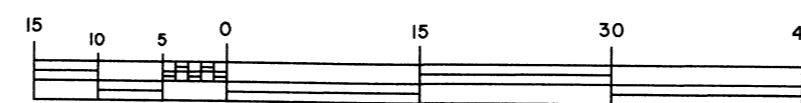
Claim Area ±1.77 Acres

2003 Arkansas Riverbed
in Section 10

Claim Area ±49.57 Acres

2003 Arkansas Riverbed
in Section 15

Claim Area ±16.90 Acres



Scale in Chains