

Tract 199: Flood Zone A

2003 Arkansas River Right Bank Ordinary High Water Mark (OHWM)

2010 Adjusted 1897 Right Bank Record Meanders

T. 10 N., R. 25 E.
Sec. 36

Sec. 35

Sec. 2

Sec. 1

Sec. 11

Sec. 12

Sec. 10

Sec. 15

Sec. 14

Sec. 13

From AP sections 2 and 35, of the 2003 Right Bank OHWM, thence upstream in section 2, through section 15, 3.39°12'W., 4.12

Point of intersection with the Adj. 1897 Right Bank Record Meanders 3.59°12'W., 3.61

2013 SMC 3.35°34'W., 4.67
3.55°34'W., 4.71
3.44°39'W., 7.17
3.10°12'W., 2.63

Slough, continue on 2003 OHWM along Right Bank of Slough

2013 SMC 3.2°15'E., 2.77
3.2°15'E., 1.65
3.2°18'W., 0.81

Point of intersection with the Adj. 1897 Left Bank Record Meanders 3.2°18'W., 4.25
3.46°57'E., 4.29
3.13°43'E., 4.81
3.7°49'E., 2.305
3.7°49'E., 4.725
3.6°24'E., 0.39

Point of intersection with the Adj. 1897 Left Bank Record Meanders 3.6°24'E., 3.78
3.6°24'E., 2.14
3.12°03'E., 0.66
3.12°03'E., 3.42
3.3°50'E., 12.25
3.3°50'E., 3.28
3.8°59'W., 13.82
3.8°59'W., 6.75
3.15°40'W., 0.10
3.15°40'W., 6.26
3.0°56'E., 1.26
3.12°18'W., 1.86
3.0°56'E., 2.77
3.70°37'W., 1.68
3.6°39'W., 3.22
3.50°54'W., 1.90
3.34°38'E., 3.07
3.7°28'W., 1.36
3.5°26'E., 1.85
3.87°46'E., 1.92
3.7°30'E., 1.92
3.86°51'E., 1.50
3.48°26'E., 1.73
3.4°37'W., 2.36
3.26°34'W., 2.64
3.53°35'W., 2.93
3.87°02'W., 3.20
3.78°25'W., 3.98
3.62°38'W., 3.15
3.44°03'W., 4.95
3.44°03'W., 6.95
3.54°38'W., 11.50
3.6°43'W., 3.32
3.47°20'W., 5.94
3.63°54'W., 6.25
3.80°09'W., 2.65
3.68°08'W., 4.57

AP sections 10 and 11, of the 2003 Right Bank OHWM, continue upstream in section 10, into section 15: 3.68°08'W., 4.57
3.77°21'W., 20.98
3.88°37'W., 13.14
3.83°53'W., 1.63

Point of intersection with the (May 26, 2010) Adj. 1897 Right Bank Record Meanders

Inverse between 9 and 20 used for partition line calculations: 3.42°07'W., 10.28

From the point of intersection with the 2003 Right Bank OHWM and the (May 26, 2010) Adjusted Record Meanders, thence section 15:

3.47°55'E., 0.75
3.42°14'E., 3.29
3.33°15'E., 2.00
3.64°31'E., 1.40
3.55°46'E., 4.20
3.65°16'E., 9.20
3.74°31'E., 5.60
3.66°15'E., 1.70
3.65°43'E., 4.71
3.80°16'E., 5.61
3.68°16'E., 4.61

1897 MC, Sections 14 and 15, thence section 14:

N.65°10'E., 1.53
N.85°29'E., 1.63
N.82°33'E., 6.41
N.80°22'E., 2.04
N.74°44'E., 3.08
N.77°03'E., 2.45
3.66°21'E., 1.73
N.78°38'E., 2.44
N.77°55'E., 3.16
N.73°59'E., 2.14
N.77°40'E., 7.64
N.70°04'E., 3.67
N.63°57'E., 3.37
N.67°52'E., 9.18
N.57°49'E., 2.50

1897 MC, Sections 1 and 12, thence section 12:

N.86°09'E., 2.79
N.57°07'E., 9.97
N.80°31'E., 3.79
N.47°55'E., 3.28
N.4°04'E., 3.59
N.39°19'E., 3.39
N.32°47'E., 1.98
N.28°37'E., 3.29
N.25°16'E., 0.67

1897 MC, Sections 1 and 12, thence section 12:

N.28°33'E., 4.39
N.20°28'E., 3.68
N. 0°21'E., 0.015
N. 0°21'E., 5.245
N. 4°53'E., 9.28
N. 2°33'W., 5.835
N. 2°33'W., 4.405
N. 3°48'W., 2.61
N. 1°19'W., 5.13
N.24°05'W., 6.05
N.22°34'W., 2.63

1897 MC, Sections 1 and 12

1897 MC, Sections 1 and 12, thence section 1:

N.12°24'W., 3.30
1897 MC, Sections 1 and 2, thence section 2:

N.23°03'W., 9.21
N.17°04'W., 4.20
N.14°34'W., 4.145
N.14°34'W., 0.255
N.20°16'W., 5.00
N.18°34'W., 5.00
N.28°33'W., 3.00
N.21°18'W., 8.095
N.21°18'W., 1.915
N.10°04'W., 4.60
N.1°34'W., 3.60
N. 0°34'W., 7.60
N.14°04'W., 1.80
N. 0°34'W., 0.885
N. 0°34'W., 4.235
N. 4°04'W., 4.90
N. 0°04'W., 4.90
N.22°03'W., 2.40
N.19°03'W., 0.62
N.19°03'W., 5.38

Point of intersection with the 2003 Right Bank OHWM:

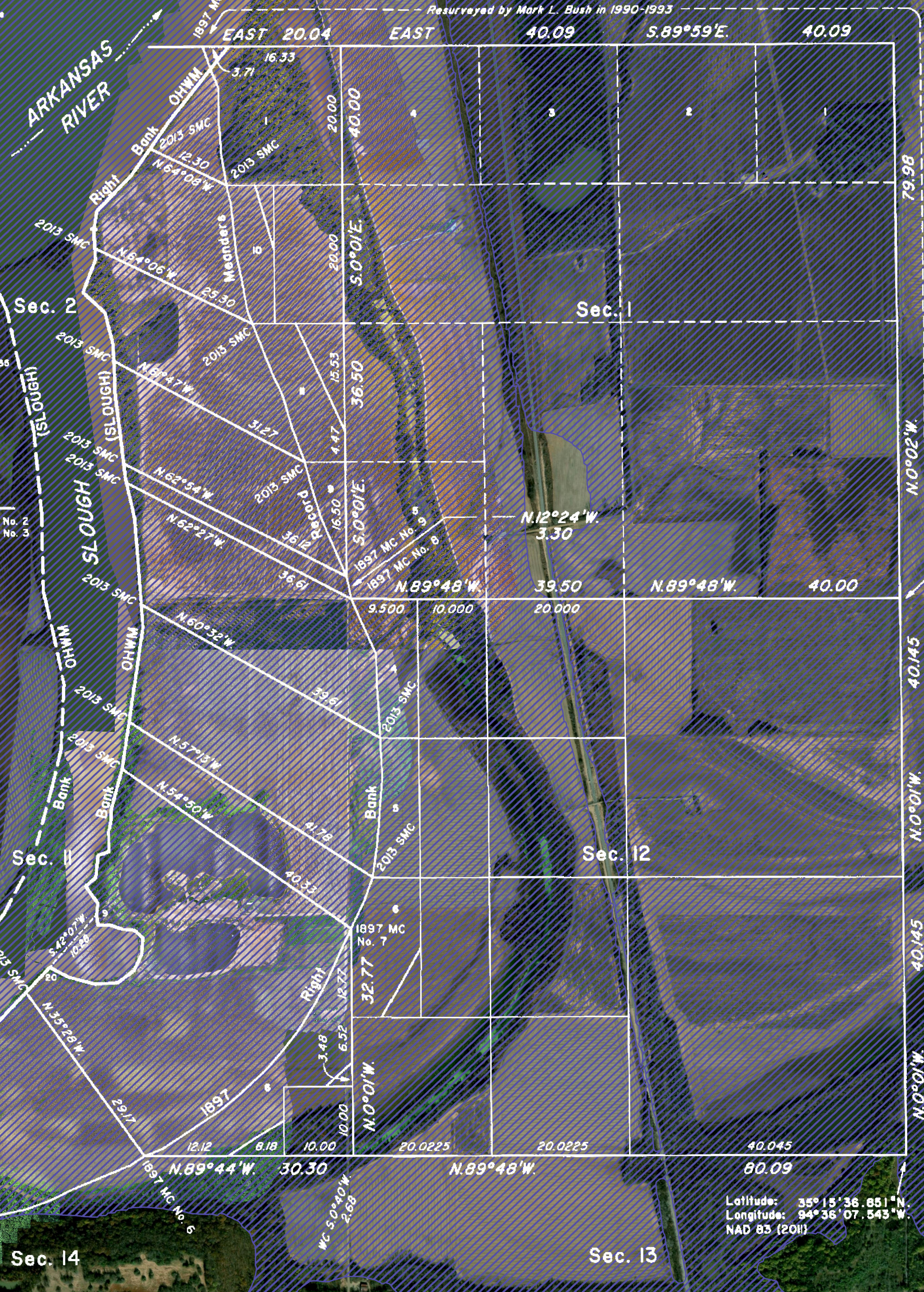
1897 MC No. 10, sections 2 and 35

INDEX OF SECTION ENLARGEMENTS

SECTION 2 See Sheet No. 2
SECTION 11 and 12 See Sheet No. 3



Date Created: 08.26.2019
Credits: Choctaw Nation GIS Department
Contact: cngis@choctawnation.com - 580.924.8280, ext. 2257
Path: Z:\ArkansasRiverBed\ArkansasRiverbed\ArkansasRiverbed.aprx
Disclaimer: The data on this map is for informational and planning purposes only. The Choctaw Nation of Oklahoma is not responsible for the misuse or misrepresentation of the data.



A history of surveys and additional information are contained in the field notes.

This plat, in three sheets, represents the dependent resurvey of a portion of the east boundary, a portion of the subdivisional lines, the 2010 adjusted record meanders of the 1897 right bank of the Arkansas River, and the informative traverse of the digitized 2003 right bank ordinary high water mark of the Arkansas River, designed to restore the corners in their true original locations according to the best available evidence, and the survey of the subdivision of sections, the metes-and-bounds surveys, and accretions to certain lots, in sections 2, 11, and 12, Township 9 North, Range 25 East, Indian Meridian, Oklahoma.

Except as indicated hereon, the lottings and areas are as shown on the plat approved November 2, 1898.

The intersections of the 2003 digitized right bank with surveyed lines were verified by this survey.

Survey executed by Donald L. Brewer, Cadastral Surveyor, beginning April 15, 2013 and completed June 17, 2013 pursuant to Special Instructions dated and approved April 15, 2013, for Group No. 220, Oklahoma.

UNITED STATES DEPARTMENT OF THE INTERIOR
BUREAU OF LAND MANAGEMENT

Santa Fe, New Mexico April 15, 2015

This plat is strictly conformable to the approved field notes, and the survey, having been correctly executed in accordance with the requirements of law and the regulations of this Bureau, is hereby accepted.

For the Director
Robert A. Carson

Latitude: 35°15'36.851"N
Longitude: 94°36'07.543"W
NAD 83 (2011)

Flood Zone A

