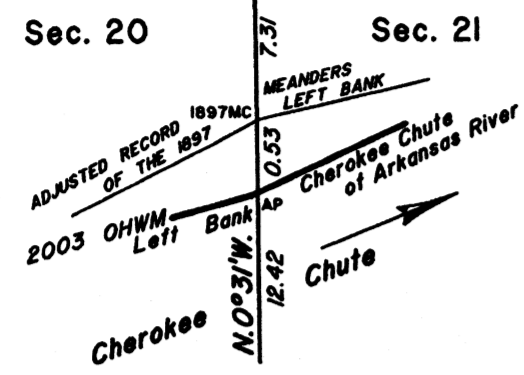


TOWNSHIP 10 NORTH, RANGE 26 EAST, OF THE INDIAN MERIDIAN, OKLAHOMA
SUPPLEMENTAL PLAT

ENLARGED DIAGRAM No. 1
(Not to Scale)



ENLARGED DIAGRAM No. 2
(Not to Scale)

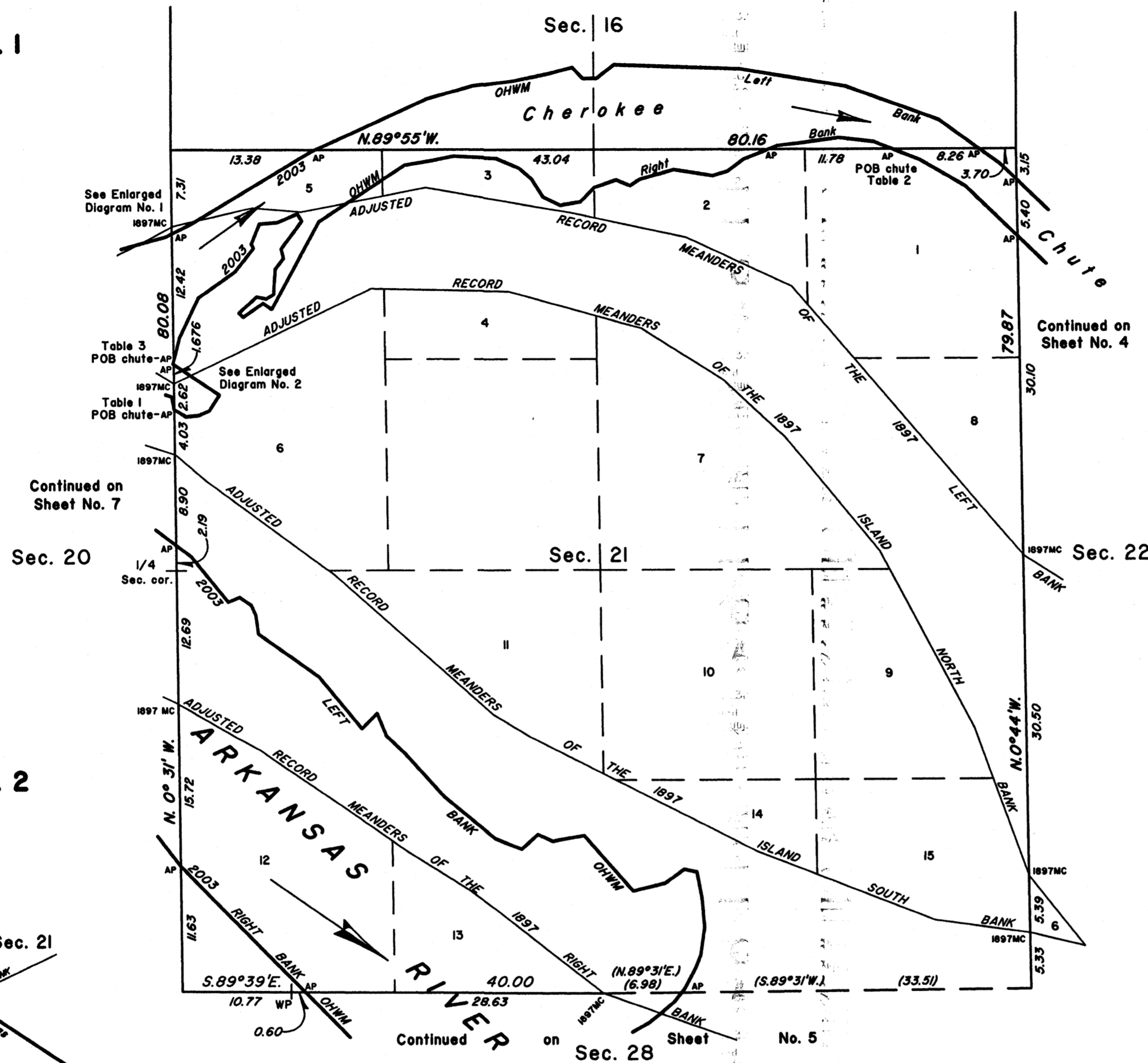
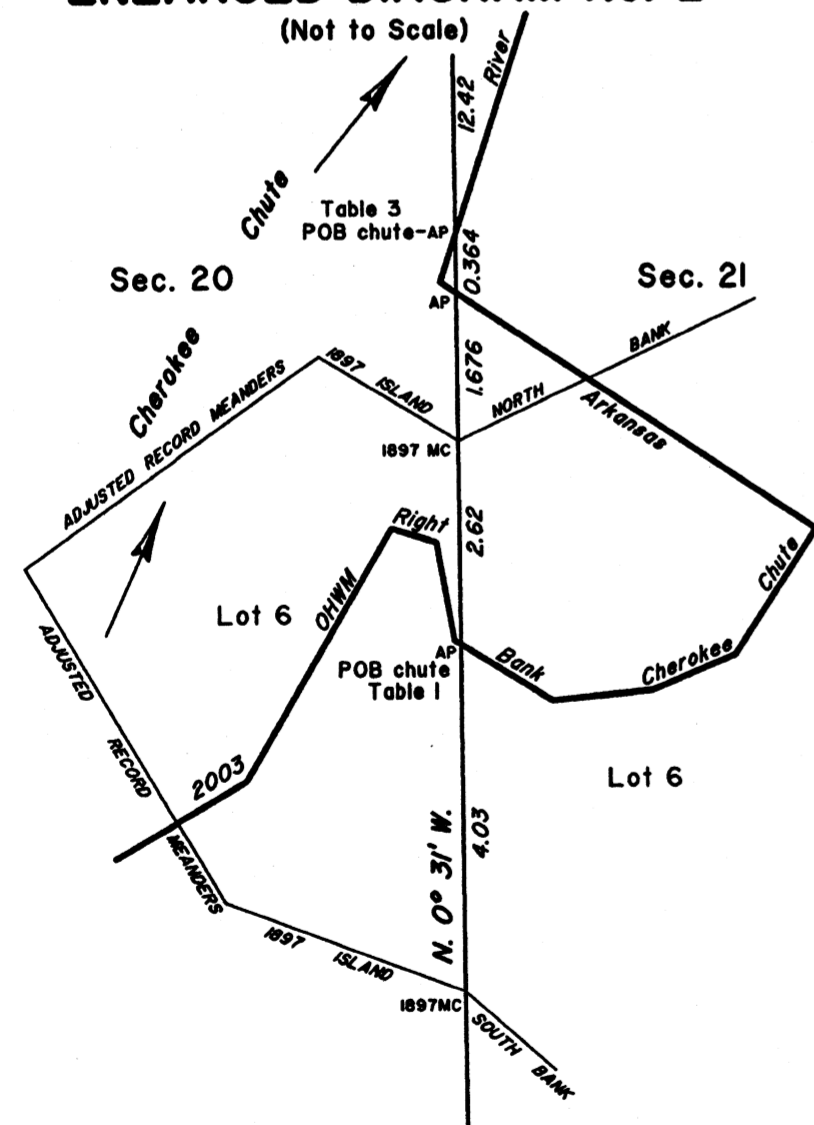


Table 1
2003 Cherokee Chute
of Arkansas River
in Section 21

From AP, sections 20 and 21, at 2003 Right Bank OHWM, thence downstream in section 21:	S.58°14'E., 0.93
	N.84°24'E., 1.21
	N.66°56'E., 1.09
	N.32°54'E., 1.81
	N.55°53'W., 4.85
AP, sections 20 and 21,	S. 0°31'E., 1.676
1897 MC, sections 20 and 21	S. 0°31'E., 2.62
AP, sections 20 and 21, at 2003 Right Bank OHWM, place of beginning, containing	±1.18 Acres Claim Area
	(See Enlarged Diagram No. 2)

Table 2
2003 Cherokee Chute
of Arkansas River
in Section 21

From AP, sections 16 and 21, at 2003 Right Bank OHWM, thence downstream in section 21:	S.68°15'E., 2.83
	S.59°42'E., 5.02
	S.45°43'E., 7.14
AP, sections 21 and 22,	N. 0°44'W., 5.40
AP, sections 21 and 22, at 2003 OHWM Left Bank Cherokee Chute, thence upstream:	N.45°52'W., 2.47
	N.53°55'W., 2.44
AP, sections 21 and 22,	N.89°55'W., 8.26
AP, sections 16 and 21, at 2003 Right Bank OHWM, place of beginning, containing	± 3.65 Acres Claim Area

Table 3
2003 Cherokee Chute of
Arkansas River in Section 21

From AP, sections 20 and 21, at 2003 Right Bank OHWM, thence downstream in section 21:	S.86°50'E., 4.02
	S.66°50'E., 2.35
	N. 8°07'E., 2.22
	S.48°32'E., 1.61
	N.23°52'E., 4.33
	S.31°57'E., 1.97
	N.54°36'E., 4.28
	S.63°35'E., 1.84
	N.38°24'E., 2.86
	N.80°38'E., 1.94
	N.27°28'W., 0.45
	N.44°02'E., 1.91
	N.2°52'E., 2.08
	N.7°18'E., 2.19
	N.85°22'E., 1.72
	S.67°36'E., 1.41
	N.66°32'E., 2.07
	N.57°16'E., 1.06
	S.30°51'E., 0.80
	N.74°07'E., 3.40
	S.36°35'W., 3.30
	S.81°00'E., 3.74
	S.13°22'E., 0.93
	N.73°35'E., 1.44
	S.37°47'W., 1.29
	N.53°29'E., 1.94
	S. 3°54'W., 2.43
	N.68°20'E., 2.52
	S.59°37'W., 0.81
	AP, sections 16 and 21, N.89°55'W., 43.04
	AP, sections 16 and 21, at 2003 OHWM Left Bank Cherokee Chute, thence upstream:
	S.65°41'W., 0.40
	S.58°56'W., 13.42
	S.63°24'W., 1.62
	AP, sections 20 and 21, S. 0°31'E., 12.42
	AP, sections 20 and 21, at 2003 Right Bank OHWM, place of beginning, containing
	± 21.39 Acres Claim Area
	continued on next column

2003 Cherokee Chute of
Arkansas River in Section 16

From AP, sections 16 and 21, at 2003 OHWM Right Bank Cherokee Chute, thence upstream in section 16:	N.78°26'E., 3.67
	N.75°45'E., 2.26
	S.43°27'E., 1.43
	N.83°15'W., 3.36
	S.82°32'W., 3.91
	S.83°55'W., 1.92
	S.68°20'W., 0.98
AP, sections 16 and 21,	N.89°55'W., 43.04
AP, sections 16 and 21, at 2003 OHWM Left Bank Cherokee Chute, thence downstream:	S.70°06'E., 9.42
	S.53°55'E., 4.73
AP, sections 16 and 21, at 2003 OHWM Right Bank Cherokee Chute, place of beginning, containing	N.89°55'W., 8.26
	± 34.10 Acres Claim Area
	continued on next column

2003 Arkansas Riverbed in Section 21

From AP, sections 21 and 28, at 2003 Left Bank OHWM, thence upstream in section 21:	N.65°12'W., 1.55	S.67°16'W., 1.17
	S.47°57'W., 2.08	N.38°44'W., 5.54
	N.38°12'E., 0.47	N.53°12'W., 1.38
	N.27°54'E., 2.29	N.68°25'W., 2.67
	N.21°30'E., 1.31	N.50°23'W., 6.29
	N. 8°30'E., 2.63	N.41°49'W., 5.45
	N. 4°40'W., 2.76	N.46°25'W., 2.50
	N.10°34'W., 2.57	N.22°39'W., 2.32
	N.77°19'W., 1.23	S.44°51'W., 2.03
	S.53°56'W., 2.24	N.39°22'W., 6.41
	S.76°27'W., 3.13	N.54°25'W., 7.02
	N.41°20'W., 7.00	N. 7°59'W., 1.82
	S.80°04'W., 3.03	N.24°14'W., 1.01
	continued on next column	N.55°04'W., 1.34
		continued on next column

Reference should be made to sheet No. 1 for survey information.

UNITED STATES DEPARTMENT OF THE INTERIOR
BUREAU OF LAND MANAGEMENT

Santa Fe, New Mexico October 2, 2008

This plat, showing amended boundaries and areas is based upon the official records and, having been correctly prepared in accordance with the regulations of this Bureau is hereby accepted.

For the Director

John A. Casian

Chief Cadastral Surveyor for New Mexico



Scale in Chains