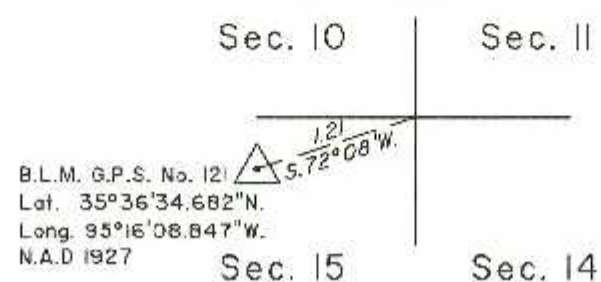


TOWNSHIP 13 NORTH, RANGE 19 EAST, OF THE INDIAN MERIDIAN, OKLAHOMA
DEPENDENT RESURVEY AND SURVEY

ENLARGED DIAGRAM
(Not to Scale)



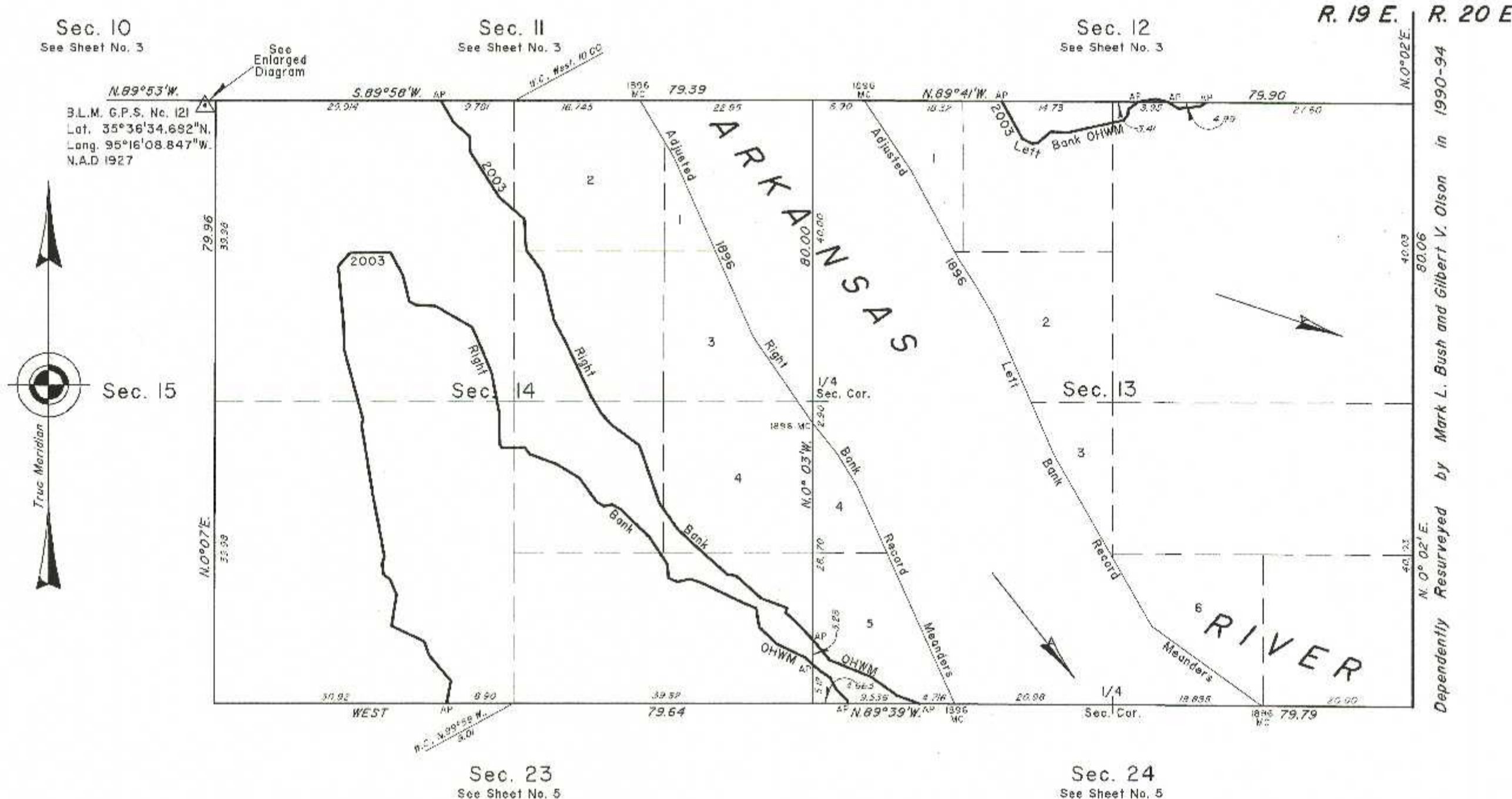
B.L.M. G.P.S. No. 121
Lat. 35°36'34.682"N
Long. 95°16'08.847"W
N.A.D. 1927

Adjusted 1896 Right Bank Record Meanders	Adjusted 1896 Left Bank Record Meanders
From the 1896 MC, sections 13 and 24 thence;	From the 1896 MC, sections 13 and 24 thence;
N.24°16'W. 31.68	N.54°12'W. 18.09
N.31°33'W. 4.97	N.29°51'W. 26.17
N.39°37'W. 5.09	N.23°36'W. 20.14
1896 MC Secs. 13 and 14	N.30°20'W. 5.03
N.34°25'W. 14.02	N.32°35'W. 4.03
N.23°56'W. 26.04	N.26°21'W. 13.09
N.30°55'W. 8.76	N.33°49'W. 11.25
1896 MC Secs. 11 and 14	1896 MC Secs. 12 and 13

2003 Arkansas River in Sections 13 and 14 Right Bank OHWM as Digitized
From AP, sections 14 and 23, at 2003 Right Bank OHWM, thence upstream in section 14;
N.11°1'E. 3.02
N.40°28'W. 4.46
N.20°36'W. 1.96
N.64°45'W. 4.81
N. 8°59' E. 4.16
N.22°13'W. 2.24
N.53°42'W. 1.01
N. 8°25'W. 1.41
N.15°01'E. 1.09
N.10°33'W. 6.32
N. 9°33'W. 9.32
N.16°46'E. 0.76
N.15°07'W. 9.60
N. 1°32'W. 3.47
N. 5°14'W. 7.70
N.41°50'E. 2.29
N.89°25'E. 5.39
S.29°20'E. 3.43
S.13°33'E. 3.56
S.62°19'E. 1.05
S.66°41'E. 2.60
S.69°37'E. 1.95
S.60°15'E. 3.62
S.24°27'E. 3.05
S.22°00'E. 3.61
S.11°09'E. 5.21
S. 1°08'E. 4.30
S.29°37'E. 0.62
N.87°41'E. 3.01
S.35°00'E. 1.19
S.70°11'E. 3.79
S.58°25'E. 3.54
S.36°30'E. 3.92
S.59°45'E. 1.08
N.77°46'E. 1.11
S.60°46'E. 1.27
S.46°07'E. 5.37
S.33°40'E. 4.29
S. 5°34'E. 1.85
S.66°32'E. 1.32
N.76°24'E. 1.67
S.71°41'E. 1.71
S.64°22'E. 5.96
S.66°35'E. 1.95
S. 9°47'E. 2.58
S.46°19'E. 3.17
S.64°33'E. 4.10
S.48°42'E. 1.48
AP sections 13 and 14
S.48°42'E. 1.04
S.54°26'E. 1.87
S.28°30'E. 1.82
S.45°12'E. 2.04
S. 8°28'E. 0.34
AP sections 13 and 24

2003 Arkansas River in Sections 13 and 14 Right Bank OHWM as Digitized
From AP, sections 13 and 24, at 2003 Right Bank OHWM, thence upstream in section 13;
N.69°38'W. 3.18
N.54°26'W. 1.40
N.54°28'W. 2.92
N.67°58'W. 5.87
N.40°02'W. 3.04
N.42°39'W. 0.46
AP sections 13 and 14
N.42°39'W. 2.78
N.46°09'W. 2.33
N.12°18'E. 0.69
N.69°59'W. 3.61
N.48°20'W. 4.49
N.78°39'W. 1.20
N.48°08'W. 5.88
N.47°45'W. 2.96
N.35°23'W. 4.22
N.19°16'W. 8.16
N.53°18'W. 4.41
N.43°40'W. 2.13
N.30°48'W. 2.60
N.25°33'W. 8.20
N.27°08'W. 3.22
N.13°35'W. 6.51
N.36°22'W. 3.71
N. 3°28'W. 4.08
N.49°06'W. 4.33
N.32°46'W. 7.11
N. 4°33'W. 2.14
N.48°14'W. 2.79
N.30°52'W. 3.40
AP sections 11 and 14

2003 Arkansas River in Sections 12 and 13 Left Bank OHWM as Digitized
From AP, sections 12 and 13, at 2003 Left Bank OHWM, thence upstream in section 13;
S.64°47'W. 0.90
S.84°01'W. 2.90
N.58°07'W. 1.61
AP sections 12 and 13
N.75°44'W. 1.70
S.80°13'W. 2.34
AP sections 12 and 13
S.53°29'W. 1.62
S. 7°51'W. 0.83
S.39°58'W. 0.86
S.77°40'W. 7.49
N.88°28'W. 2.39
S.49°20'W. 2.18
S.77°12'W. 0.79
N.62°54'W. 1.47
N.28°41'W. 5.70
AP sections 12 and 13



S.62°19'E. 1.05	N.30°48'W. 2.60
S.66°41'E. 2.60	N.25°33'W. 8.20
S.69°37'E. 1.95	N.27°08'W. 3.22
S.60°15'E. 3.62	N.13°35'W. 6.51
S.24°27'E. 3.05	N.36°22'W. 3.71
S.22°00'E. 3.61	N. 3°28'W. 4.08
S.11°09'E. 5.21	N.49°06'W. 4.33
S. 1°08'E. 4.30	N.32°46'W. 7.11
S.29°37'E. 0.62	N. 4°33'W. 2.14
N.87°41'E. 3.01	N.48°14'W. 2.79
S.35°00'E. 1.19	N.30°52'W. 3.40
S.70°11'E. 3.79	AP sections 11 and 14
S.58°25'E. 3.54	
S.36°30'E. 3.92	
S.59°45'E. 1.08	
N.77°46'E. 1.11	
S.60°46'E. 1.27	
S.46°07'E. 5.37	
S.33°40'E. 4.29	
S. 5°34'E. 1.85	
S.66°32'E. 1.32	
N.76°24'E. 1.67	
S.71°41'E. 1.71	
S.64°22'E. 5.96	
S.66°35'E. 1.95	
S. 9°47'E. 2.58	
S.46°19'E. 3.17	
S.64°33'E. 4.10	
S.48°42'E. 1.48	
AP sections 13 and 14	
S.48°42'E. 1.04	
S.54°26'E. 1.87	
S.28°30'E. 1.82	
S.45°12'E. 2.04	
S. 8°28'E. 0.34	
AP sections 13 and 24	

Reference should be made to sheet No. 1 for survey and disclaimer information.

UNITED STATES DEPARTMENT OF THE INTERIOR
BUREAU OF LAND MANAGEMENT

Sante Fe, New Mexico April 20, 2012

This plat is strictly conformable to the approved field notes, and the survey, having been correctly executed in accordance with the requirements of law and the regulations of this Bureau, is hereby accepted.

For the Director
John A. Casan

Chief Cadastral Surveyor for New Mexico

2003 Arkansas Riverbed in Section 13
Claim Area ±628.78 Acres

2003 Arkansas Riverbed in Section 14
Claim Area ±377.59 Acres

