

TOWNSHIP 9 NORTH, RANGE 25 EAST, OF THE INDIAN MERIDIAN, OKLAHOMA
DEPENDENT RESURVEY AND SURVEY

2003 Arkansas River Right Bank Ordinary High Water Mark (OHWM)

From AP, sections 2 and 35, at the 2003 Right Bank OHWM, thence upstream in section 2, through section II, S.39°12'W., 4.12

Point of intersection with the Adj. 1897 Right Bank Record Meanders

2013 SMC	S.39°12'W.	9.61
	S.35°34'W.	4.87
	S.35°34'W.	4.72
	S.44°39'W.	7.17
	S.10°12'W.	2.65

Slough, continue on 2003 OHWM along Right Bank of Slough

2013 SMC	S. 2°13'E.	2.77
	S. 2°13'E.	1.65
	S.2°18'W.	0.81

Point of intersection with the Adj. 1897 Left Bank Record Meanders

2013 SMC	S.2°18'W.	4.25
	S.46°57'E.	4.29
	S.13°45'E.	4.81
	S.°49'E.	2.305
	S.°49'E.	4.725
	S. 6°24'E.	6.39

Point of intersection with the Adj. 1897 Left Bank Record Meanders

2013 SMC	S. 6°24'E.	3.78
	S. 6°24'E.	2.14
	S.12°03'E.	0.66
	S.12°03'E.	5.42
	S. 3°50'E.	12.25
	S. 3°50'E.	3.29
	S. 8°59'W.	13.82
	S. 8°59'W.	6.75
	S.15°40'W.	0.10
	S.15°40'W.	6.26
	S. 0°56'E.	1.28
	S.12°18'W.	1.86
	S. 0°56'E.	2.77
	S.70°37'W.	1.68
	S. 6°39'W.	3.22
	S.50°54'W.	1.90
	S.34°38'E.	3.07
	S. 7°28'W.	1.56
	S. 5°26'E.	1.55
	S.87°46'E.	1.92
	S.77°30'E.	1.92
	S.86°51'E.	1.50
	S.48°26'E.	1.73
	S. 4°37'W.	2.36
	S.26°34'W.	2.64
	S.53°35'W.	2.93
	S.87°02'W.	3.20
	N.75°25'W.	3.98
	N.62°38'W.	3.15
	S.44°03'W.	4.95
	S.44°03'W.	6.95
	S.54°38'W.	11.50
	S.61°43'W.	3.32
	S.4°20'W.	5.94
	S.63°54'W.	6.25
	S.80°09'W.	2.63
	S.68°08'W.	4.57

AP sections 10 and 11, at the 2003 Right Bank OHWM, continue upstream in section 10, into section 15:

	S.68°08'W.	4.57
	S.77°21'W.	20.99
	S.88°37'W.	13.14
	N.83°53'W.	1.63

Point of intersection with the (May 26, 2010) Adj. 1897 Right Bank Record Meanders

Inverse between 9 and 20 used for partition line calculations; S.42°07'W. 10.28

2010 Adjusted 1897 Right Bank Record Meanders

From the point of intersection with the 2003 Right Bank OHWM and the (May 26, 2010) Adjusted Record Meanders, thence section 15:

	S.47°45'E.	0.76
	S.42°14'E.	3.29
	S.55°15'E.	2.00
	S.64°31'E.	1.40
	S.64°46'E.	4.20
	S.65°16'E.	9.20
	S.74°31'E.	5.60
	S.86°15'E.	1.70
	N.89°45'E.	4.71
	N.80°16'E.	5.61
	N.68°18'E.	4.61

1897 MC, Sections 14 and 15, thence section 14:

	N.65°10'E.	1.53
	N.88°29'E.	1.63
	N.82°35'E.	6.41
	N.80°22'E.	2.04
	N.74°44'E.	3.06
	N.77°03'E.	2.45
	N.79°03'W.	1.73
	N.79°38'E.	2.44
	N.77°55'E.	3.16
	N.73°59'E.	2.14
	N.77°40'E.	7.64
	N.70°04'E.	3.67
	N.63°57'E.	3.37
	N.67°52'E.	9.18
	N.57°49'E.	2.50

1897 MC, Sections 14 and 15, thence section 15:

	N.68°09'E.	2.79
	N.57°07'E.	9.97
	N.50°51'E.	3.79
	N.47°51'E.	5.28
	N.4°04'E.	3.99
	N.39°19'E.	3.39
	N.32°47'E.	4.98
	N.28°31'E.	3.29
	N.25°16'E.	6.67

1897 MC, Sections 11 and 12, thence section 12:

	N.26°33'E.	4.39
	N.20°28'E.	3.66
	N. 8°21'E.	0.015
	N. 8°21'E.	5.245
	N. 4°53'E.	9.28
	N. 2°33'W.	5.635
	N. 2°33'W.	4.405
	N. 3°48'W.	2.61
	N. 1°19'W.	5.13
	N.24°05'W.	6.05
	N.22°34'W.	2.63

1897 MC, Sections 1 and 12

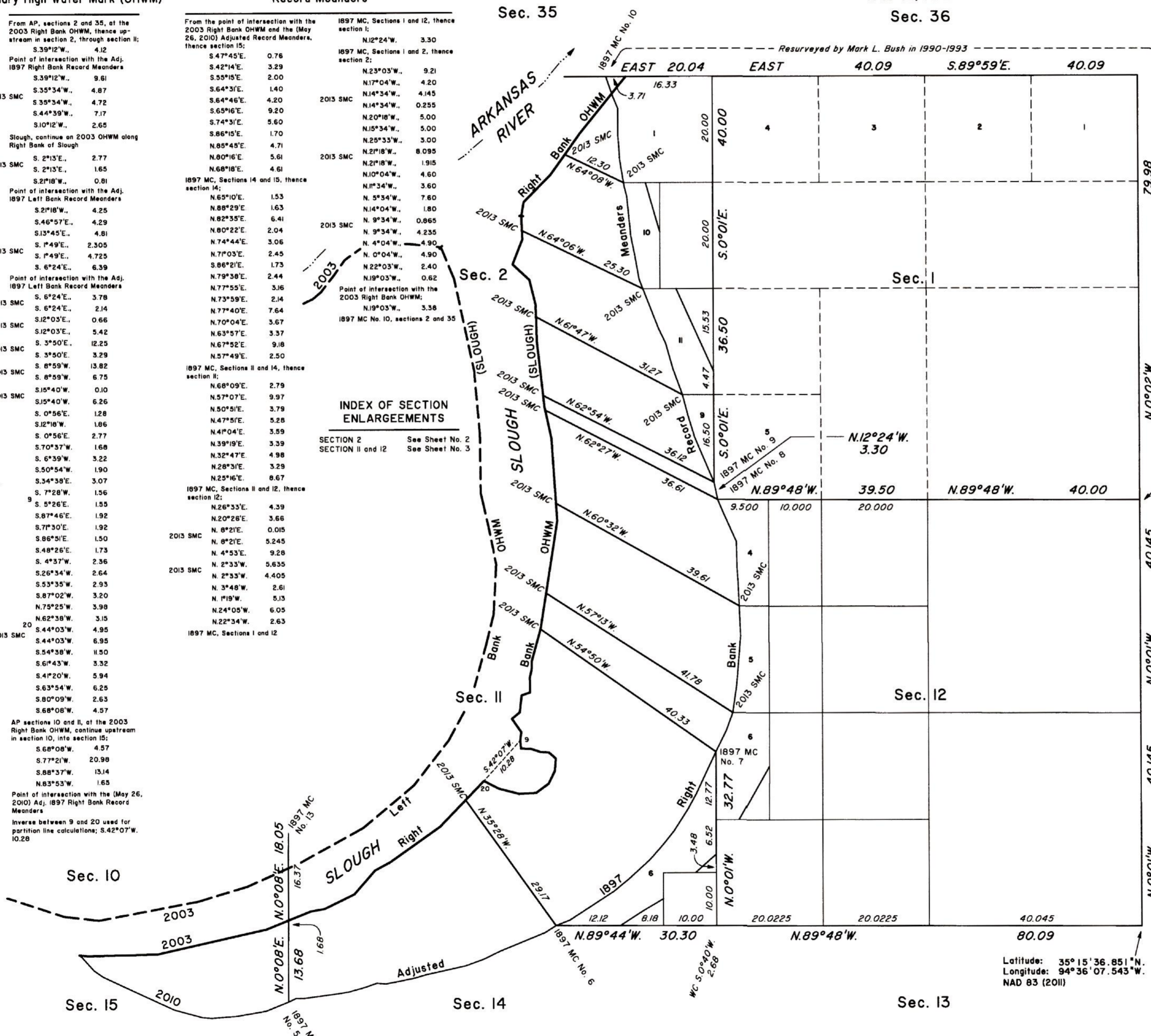
INDEX OF SECTION ENLARGEMENTS

SECTION 2 See Sheet No. 2
SECTION 11 and 12 See Sheet No. 3

T. 10 N., R. 25 E.

Sec. 36

Sec. 35



A history of surveys and additional information are contained in the field notes.

This plat, in three sheets, represents the dependent resurvey of a portion of the east boundary, a portion of the subdivisional lines, the 2010 adjusted record meanders of the 1897 right bank of the Arkansas River, and the informative traverse of the digitized 2003 right bank ordinary high water mark of the Arkansas River, designed to restore the corners in their true original locations according to the best available evidence, and the survey of the subdivision of sections, the metes-and-bounds surveys, and accretions to certain lots, in sections 2, 11, and 12, Township 9 North, Range 25 East, Indian Meridian, Oklahoma.

Except as indicated hereon, the lottings and areas are as shown on the plat approved November 2, 1898.

The intersections of the 2003 digitized right bank with surveyed lines were verified by this survey.

Survey executed by Donald L. Brewer, Cadastral Surveyor, beginning April 15, 2013 and completed June 17, 2013 pursuant to Special Instructions dated and approved April 15, 2013, for Group No. 220, Oklahoma.

UNITED STATES DEPARTMENT OF THE INTERIOR
BUREAU OF LAND MANAGEMENT

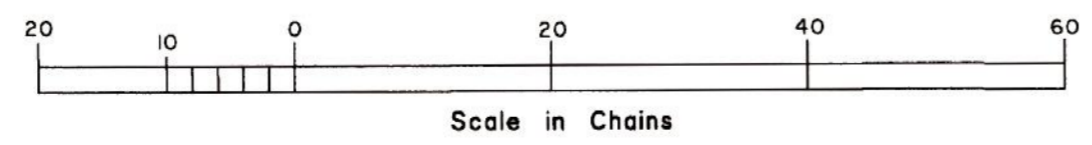
Santa Fe, New Mexico April 15, 2015

This plat is strictly conformable to the approved field notes, and the survey, having been correctly executed in accordance with the requirements of law and the regulations of this Bureau, is hereby accepted.

For the Director

Robert A. Cannon

Acting Chief Cadastral Surveyor for New Mexico



Latitude: 35° 15' 36.851" N.
Longitude: 94° 36' 07.543" W.
NAD 83 (2011)