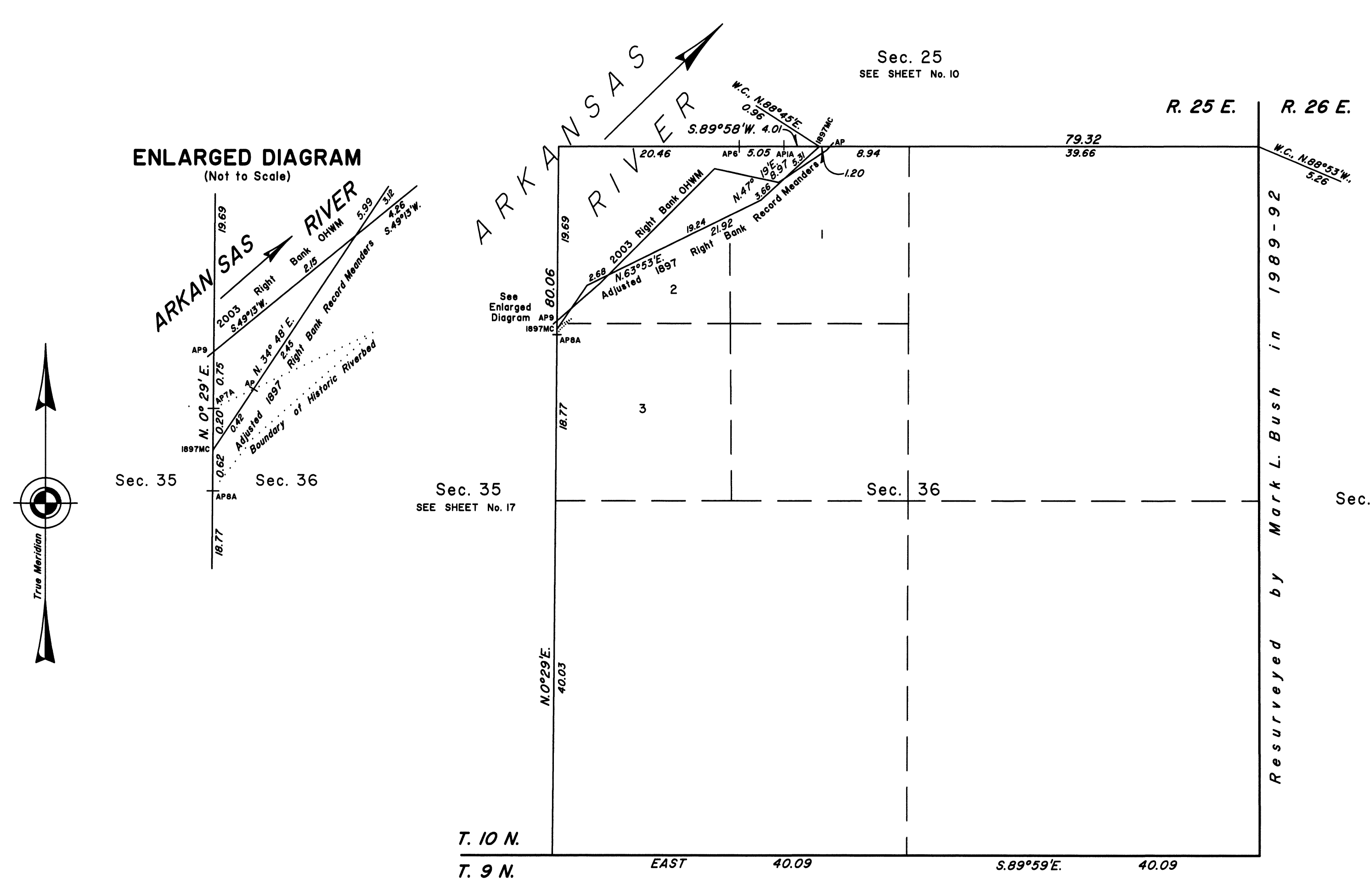
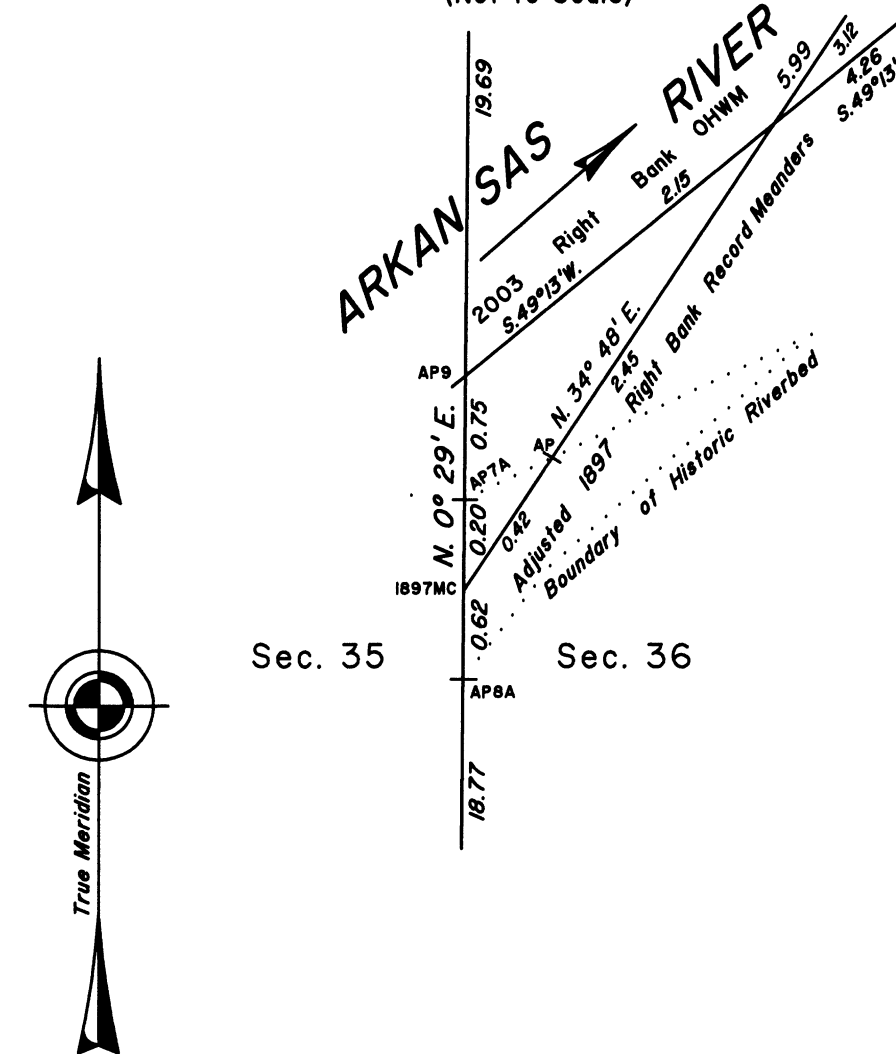


TOWNSHIP 10 NORTH, RANGE 25 EAST, OF THE INDIAN MERIDIAN, OKLAHOMA
DEPENDENT RESURVEY AND SURVEY



ENLARGED DIAGRAM
(Not to Scale)



2003 Arkansas River in Section 20 Right Bank OHWM as Digitized

From AP, sections 25 and 36, at 2003 Right Bank OHWM, thence upstream in section 36;

- S. 42° 31' W., 0.58
- S. 56° 03' W., 5.69
- Adj. 1897 R. B. Meanders
- S. 56° 03' W., 0.85
- N. 77° 52' W., 7.39
- S. 45° 01' W., 17.02
- Adj. 1897 R. B. Meanders
- S. 45° 01' W., 1.35
- S. 49° 13' W., 4.26
- Adj. 1897 R. B. Meanders
- S. 49° 13' W., 2.15
- AP, sections 35 and 36

Reference should be made to sheet No. 1 for survey and disclaimer information.

UNITED STATES DEPARTMENT OF THE INTERIOR
BUREAU OF LAND MANAGEMENT

Sante Fe, New Mexico April 30, 2010

This plat is strictly conformable to the approved field notes, and the survey, having been correctly executed in accordance with the requirements of law and the regulations of this Bureau, is hereby accepted.

For the Director

Robert A. Casias

Chief Cadastral Surveyor for New Mexico

2003
Arkansas Riverbed
in Section 36
Claim Area ± 23.71 Acres

