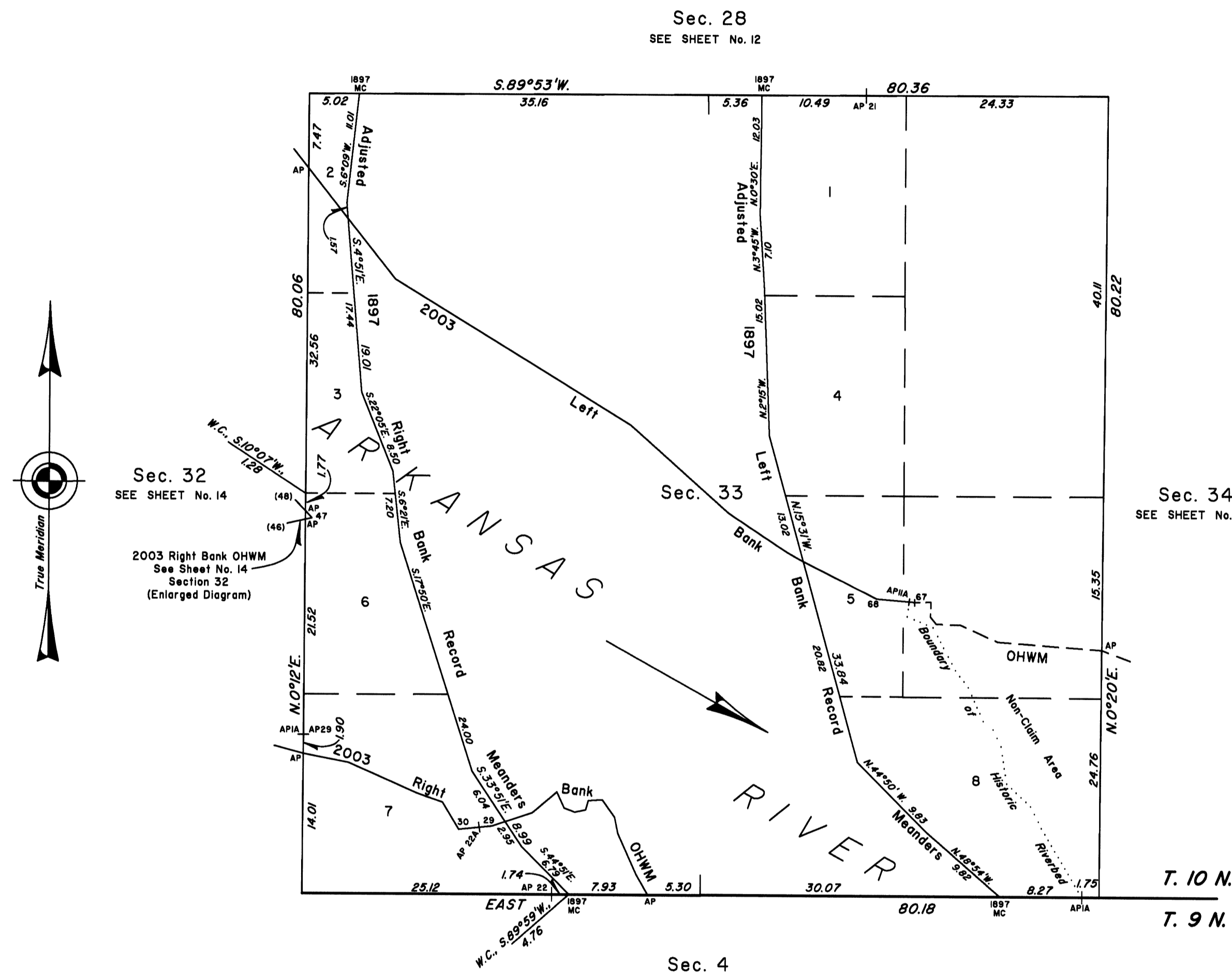


TOWNSHIP 10 NORTH, RANGE 25 EAST, OF THE INDIAN MERIDIAN, OKLAHOMA  
DEPENDENT RESURVEY AND SURVEY



Boundary of Historic Riverbed  
in Section 33

From AP IA, sections 33 and 4, at Bdy. of Historic Riverbed, thence:

N.30°40'W.,	8.04
N.26°36'W.,	2.44
N.47°25'W.,	3.32
N. 8°37'W.,	3.78
N.25°34'W.,	1.87
N.49°52'W.,	1.28
N.24°35'W.,	3.71
N.37°35'W.,	2.15
N.27°40'W.,	4.83
N.67°03'W.,	2.83
N. 6°38'E.,	1.43
N.2°11'W.,	0.06

AP IIA, 2003 Left Bank OHWM

2003 Arkansas River  
in Section 33  
Left Bank OHWM as Digitized

From AP, sections 33 and 34, at 2003 Left Bank OHWM, thence upstream in section 33:

N.85°46'W.,	10.51
N.65°56'W.,	4.12
N.87°50'W.,	2.45
N.38°06'W.,	0.94
N. 2°15'E.,	1.46
S.88°56'W.,	1.64
N.84°51'W.,	0.59
AP IIA, Bdy. Historic Riverbed	
N.84°51'W.,	3.25
N.63°32'W.,	8.26
Adj. 1897 L. B. Meanders	
N.61°01'W.,	1.85
N.56°42'W.,	7.07
N.48°23'W.,	13.22
N.58°41'W.,	8.87
N.58°42'W.,	18.98
N.38°29'W.,	7.73
Adj. 1897 L. B. Meanders	
N.38°29'W.,	6.43
AP, sections 32 and 33	

2003 Arkansas River  
in Section 33  
Right Bank OHWM as Digitized

From AP, sections 4 and 33, at 2003 Right Bank OHWM, thence upstream in section 33:

N.30°02'W.,	2.36
N.24°13'W.,	4.49
N.11°33'W.,	1.66
N.35°44'W.,	2.14
S.86°53'W.,	1.40
S.16°15'W.,	0.98
S.78°15'W.,	1.12
N.68°33'W.,	1.14
N.24°50'W.,	1.75
S.49°46'W.,	3.26
S.71°40'W.,	2.85
Adj. 1897 R. B. Meanders	
S.71°40'W.,	1.39
N.48°23'W.,	13.22
S.83°54'W.,	1.25
AP22A, Bdy. Historic Riverbed	
S.83°54'W.,	2.13
N.31°10'W.,	3.18
N.71°05'W.,	2.69
N.66°16'W.,	7.58
N.78°56'W.,	4.66
AP, sections 32 and 33	

Sec. 32  
SEE SHEET No. 14  
2003 Right Bank OHWM  
See Sheet No. 14  
Section 32  
(Enlarged Diagram)

Sec. 34  
SEE SHEET No. 16

2003  
Arkansas Riverbed  
in Section 33  
Claim Area ± 285.91 Acres  
Non-Claim Area ± 24.12 Acres

Reference should be made to sheet No. 1 for survey and disclaimer information.

UNITED STATES DEPARTMENT OF THE INTERIOR  
BUREAU OF LAND MANAGEMENT

Sante Fe, New Mexico April 30, 2010

This plat is strictly conformable to the approved field notes, and the survey, having been correctly executed in accordance with the requirements of law and the regulations of this Bureau, is hereby accepted.

For the Director

*Robert A. Casias*

Chief Cadastral Surveyor for New Mexico

