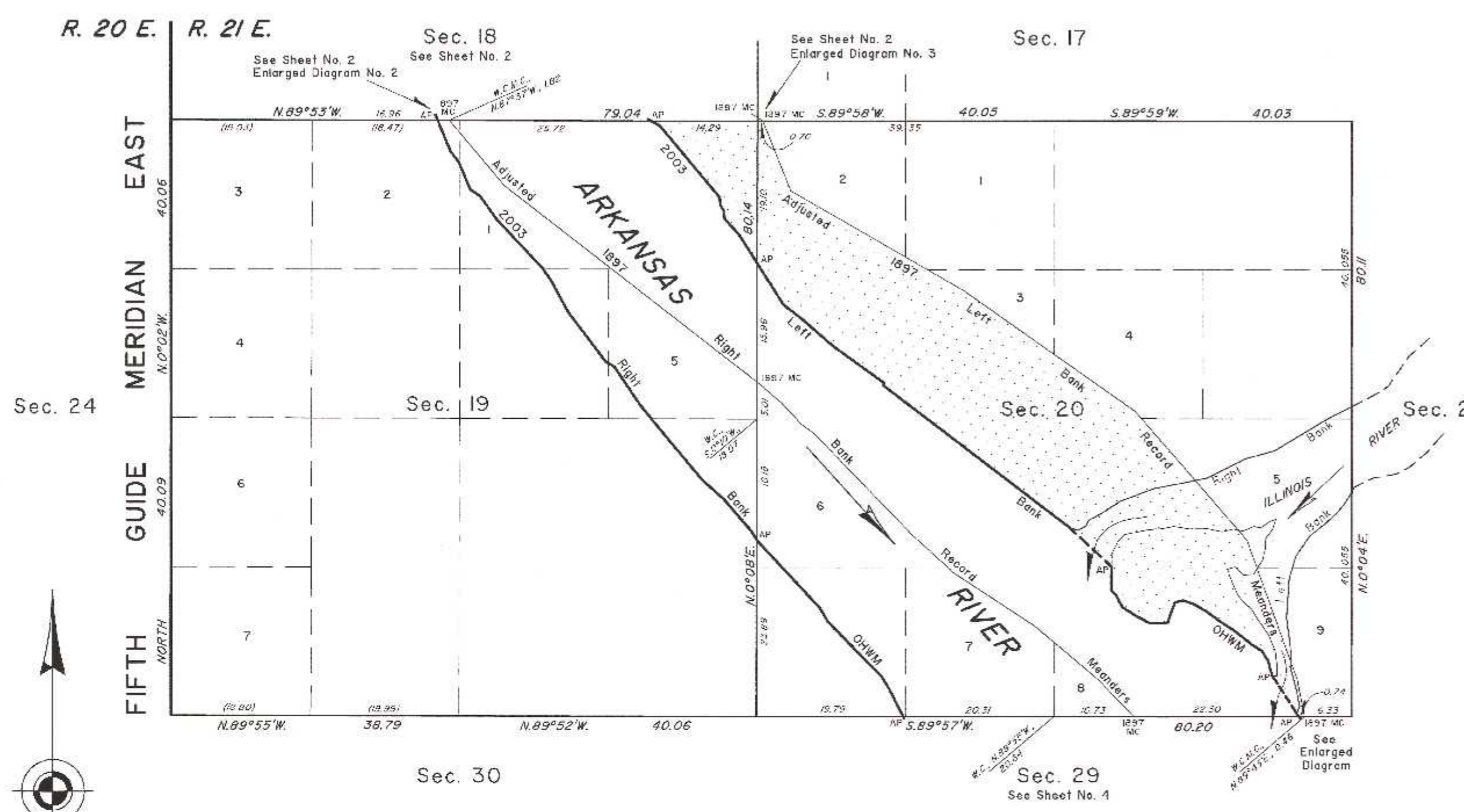


# TOWNSHIP 12 NORTH, RANGE 21 EAST, OF THE INDIAN MERIDIAN, OKLAHOMA

## DEPENDENT RESURVEY AND SURVEY



**2003 Arkansas River in Section 20 Right Bank OHWM as Digitized**

From AP, sections 20 and 29, at 2003 Right Bank OHWM, thence upstream in section 20;

N.27°16'W.	4.30
N.30°43'W.	1.84
N.44°28'W.	10.33
N.31°01'W.	2.09
N.42°46'W.	12.18
N.33°20'W.	0.43

AP sections 19 and 20

**2003 Arkansas River in Section 19 Right Bank OHWM as Digitized**

From AP, sections 19 and 20, at 2003 Right Bank OHWM, thence upstream in section 19;

N.33°20'W.	1.28
N.41°02'W.	5.55
N.47°35'W.	2.09
N.47°14'W.	1.95
N.39°52'W.	9.70
N.38°38'W.	3.56
N.34°02'W.	6.05
N.59°29'W.	1.37
N.36°47'W.	3.27
N.37°41'W.	5.00
N.28°18'W.	4.74
N.34°34'W.	2.18
N.43°11'W.	8.91
N.36°16'W.	3.87
N.53°26'W.	1.63
N.23°30'W.	4.01
N.37°45'W.	1.78
N.22°10'W.	4.54

AP sections 18 and 19

**2003 Arkansas River in Section 19 Left Bank OHWM as Digitized**

From AP, sections 19 and 20, at 2003 Left Bank OHWM, thence upstream in section 19;

N.32°30'W.	4.58
N.43°19'W.	2.82
N.3°15'W.	1.08
N.32°30'W.	0.83
N.7°23'W.	1.18
N.39°52'W.	12.52
N.60°40'W.	1.332

AP sections 18 and 19

**2003 Arkansas River in Section 20 Left Bank OHWM as Digitized**

From AP, sections 20 and 29, at 2003 Left Bank OHWM, thence upstream in section 20;

N.34°55'W.	0.53
L.B. Illinois River	
N.33°02'W.	6.07
AP South Bank of Island	
N.7°10'W.	0.83
N.13°06'W.	1.10
N.32°11'W.	1.66
N.56°24'W.	1.59
N.52°23'W.	2.99
N.56°07'W.	2.57
N.54°21'W.	1.99
N.59°13'W.	2.14
N.72°47'W.	1.44
S.76°15'W.	1.05
S.25°21'W.	1.02
S.19°20'W.	0.97
S.17°13'W.	0.90
S.79°19'W.	0.69
S.88°47'W.	1.70
N.61°41'W.	1.96
N.58°19'W.	2.30
N.27°47'W.	1.91
N.46°13'W.	0.88
N.1°04'E.	1.42
N.0°37'E.	1.76
AP North Bank of Island	
N.47°19'W.	0.74
Historic Boundary	
N.47°19'W.	4.87
Historic Boundary	
N.47°19'W.	2.10
R.B. Illinois River	
N.52°34'W.	31.55
N.0°45'E.	0.38
N.54°08'W.	8.46
N.48°40'W.	5.21
N.52°03'W.	3.44
N.32°30'W.	6.58

AP sections 19 and 20

**Adjusted 1897 Right Bank Record Meanders**

From the 1897 MC, sections 20 and 29 thence;

N.43°49'W.	6.98
N.49°50'W.	10.97
N.56°51'W.	12.96
N.47°49'W.	7.98
N.44°04'W.	18.96
N.54°20'W.	1.99
N.42°49'W.	3.99
N.49°20'W.	4.24
1897 MC Secs. 19 and 20	
N.52°4'W.	43.03
N.40°15'W.	11.52

1897 MC Secs. 18 and 19

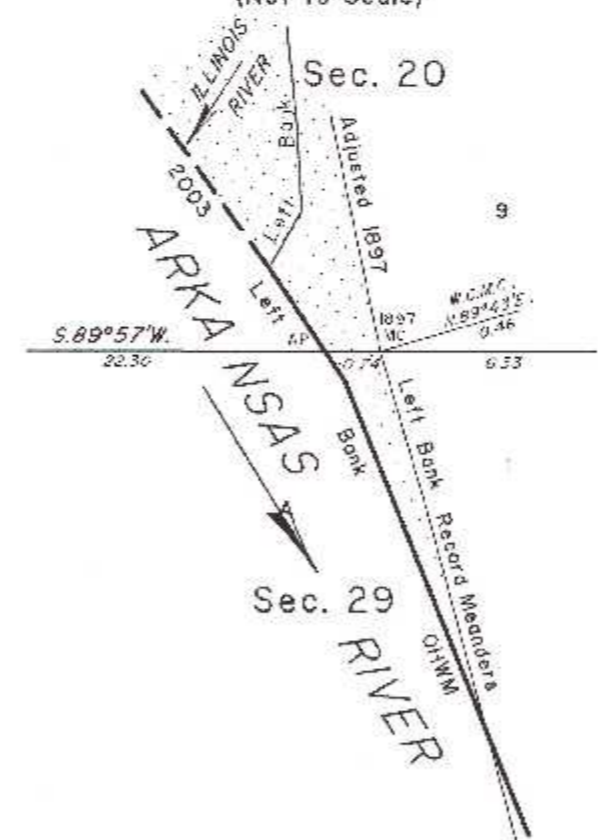
**Adjusted 1897 Left Bank Record Meanders**

From the 1897 MC, sections 20 and 29 thence;

N.10°59'W.	5.00
N.19°58'W.	2.47
L.B. Illinois River	
N.19°58'W.	13.48
South Bank of Island	
N.19°58'W.	4.06
N.40°57'W.	1.82
North Bank of Island	
N.40°57'W.	3.88
Historic Boundary	
N.40°57'W.	4.12
Historic Boundary	
N.40°57'W.	0.78
R.B. Illinois River	
N.40°57'W.	12.41
Historic Boundary	
N.54°57'W.	28.01
N.59°57'W.	27.01
N.21°58'W.	10.11

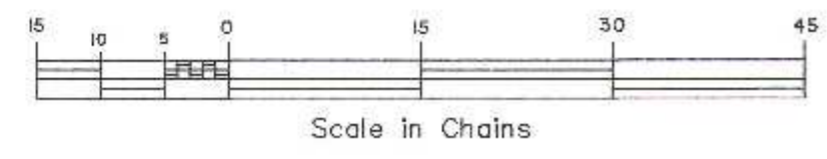
1897 MC Secs. 17 and 20

### ENLARGED DIAGRAM (Not to Scale)



<b>2003 Arkansas Riverbed in Section 19</b>	<b>2003 Arkansas Riverbed in Section 20</b>
Claim Area ±117.20 Acres	Claim Area ±192.50 Acres
<b>1897 Arkansas Riverbed</b>	<b>1897 Arkansas Riverbed</b>
Claim Area ±12.20 Acres	Claim Area ±138.42 Acres

1897 Riverbed Claim Area



Reference should be made to sheet No. 1 for survey and disclaimer information.

UNITED STATES DEPARTMENT OF THE INTERIOR  
BUREAU OF LAND MANAGEMENT

Sante Fe, New Mexico September 30, 2011

This plat is strictly conformable to the approved field notes, and the survey, having been correctly executed in accordance with the requirements of law and the regulations of this Bureau, is hereby accepted.

For the Director

Chief Cadastral Surveyor for New Mexico