

# EXHIBIT "A"

-BASIS OF BEARING-  
As shown on the official BLM plat, approved July 22, 2011, referenced to the true meridian.

# LEGAL DESCRIPTION EXHIBIT

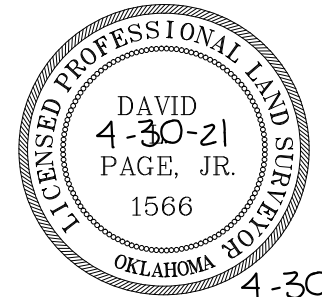
SECTION 20, TOWNSHIP 11 NORTH, RANGE 22 EAST  
HASKELL AND SEQUOYAH COUNTY, STATE OF OKLAHOMA.



124 SOUTH 8th AVENUE  
DURANT, OKLAHOMA 74701  
(580) 920-9101 OR (580) 239-0176  
FAX (580) 920-9121

DAVID L. PAGE JR. © 2020  
PROFESSIONAL LAND SURVEYOR #1566  
C.A. # 1991, EXPIRES 6-30-2021

Surveyor's Seal



4-30-21  
DATE SIGNED

*David L. Page*  
DAVID L. PAGE, JR. P.L.S. #1566

LOCATION  
SECTION 20  
TOWNSHIP 11 NORTH, RANGE 22 EAST  
HASKELL AND HASKELL COUNTY

**GENERAL NOTES**

SUBJECT TO EASEMENTS AND/OR RIGHTS-OF-WAY, EITHER RECORDED, OR IMPLIED, THEREOF.  
NO UTILITIES OF ANY KIND HAVE BEEN LOCATED EXCEPT THOSE SHOWN ON THE ABOVE PLAT  
CONTROLLING CORNERS FOR THIS LEGAL DESCRIPTION ARE AS INDICATED ON THE LOCATION MAP  
THIS IS NOT A VALID LEGAL DESCRIPTION WITHOUT THE SURVEYORS ORIGINAL SIGNATURE AND ORIGINAL SEAL  
PORTIONS OF THIS PLAT ARE IN COLOR. PHOTO AND ELECTRONIC COPIES OF THIS PLAT MAKE IT INVALID AND MAY ALTER ITS MEANING  
THIS EXHIBIT AND LEGAL DESCRIPTION MEETS THE OKLAHOMA MINIMUM STANDARDS FOR THE PRACTICE OF LAND SURVEYING AS ADOPTED BY THE OKLAHOMA STATE BOARD OF LICENSURE FOR PROFESSIONAL ENGINEERS AND LAND SURVEYORS.

NO.	REVISION/ISSUE	DATE

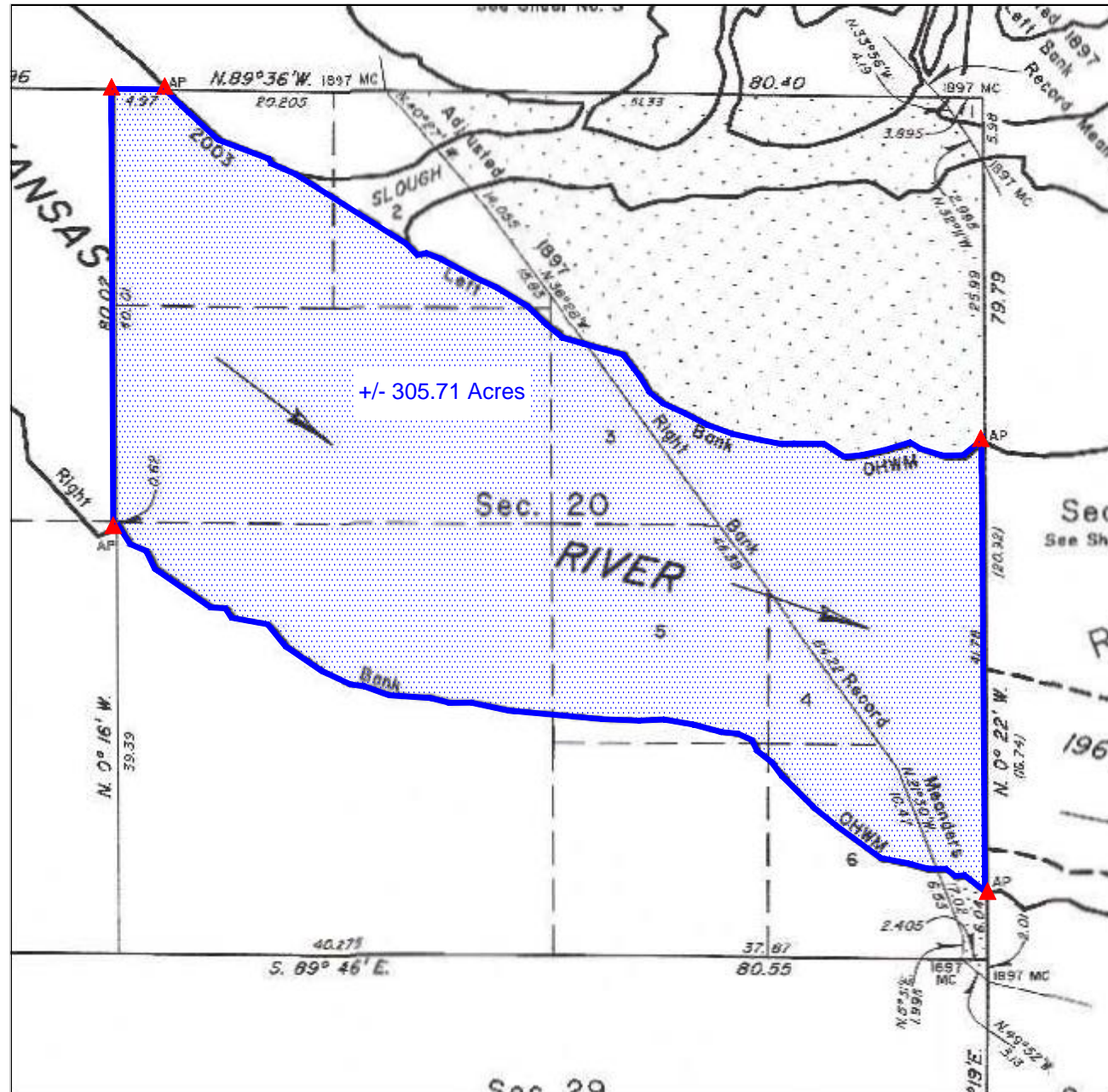
SURVEY INFORMATION	
FIELD WORK PERFORMED:	NONE
DATE OF LAST SITE VISIT:	NONE
EXHIBIT COMPLETED:	4-30-21

Project Name and Address  
ARKANSAS RIVER EXHIBIT  
SECTION 20, TOWNSHIP 11 NORTH, RANGE 22 EAST  
HASKELL AND SEQUOYAH COUNTY, STATE OF OKLAHOMA.

SCALE 1" = 1000'

SHEET NO. 1 OF 2

DATE 7-30-20



**LEGAL DESCRIPTION:**

A parcel of land situated in section 20 of township 11 north, range 22 east, Indian Meridian, Haskell and Sequoyah County, Oklahoma, and being more particularly described as follows:

**BEGINNING** at the angle point of sections 20 and 21, at the digitized 2003 left bank ordinary high-water mark, upstream along said mark in section 20;

**THENCE**, upstream along aforesaid mark, S. 50°59' W., 146.52 feet;

**THENCE**, S. 88°55' W., 125.40 feet;

**THENCE**, N. 72°39' W., 143.22 feet;

**THENCE**, N. 57°24' W., 72.60 feet;

**THENCE**, S. 73°12' W., 166.98 feet;

**THENCE**, S. 77°36' W., 153.78 feet;

**THENCE**, S. 85°54' W., 95.70 feet;

**THENCE**, N. 57°24' W., 145.20 feet;

**THENCE**, N. 89°32' W., 186.12 feet;

**THENCE**, S. 88°55' W., 80.52 feet;

**THENCE**, N. 78°49' W., 118.14 feet;

**THENCE**, N. 77°51' W., 175.56 feet;

**THENCE**, N. 70°32' W., 171.60 feet;

**THENCE**, N. 62°47' W., 148.50 feet;

**THENCE**, N. 65°23' W., 150.48 feet;

**THENCE**, N. 49°54' W., 106.92 feet;

**THENCE**, N. 31°10' W., 110.22 feet;

**THENCE**, N. 37°37' W., 168.96 feet;

**THENCE**, N. 74°42' W., 178.20 feet;

**THENCE**, N. 73°59' W., 74.58 feet to the Adjusted 1887 Right Bank Record Meanders;

**THENCE**, N. 73°59' W., 130.68 feet;

**THENCE**, N. 50°59' W., 124.74 feet;

**THENCE**, N. 46°05' W., 163.68 feet;

**THENCE**, N. 58°49' W., 225.72 feet;

**THENCE**, N. 65°27' W., 139.26 feet;

**THENCE**, N. 61°21' W., 242.88 feet;

**THENCE**, N. 68°43' W., 92.40 feet;

**THENCE**, S. 78°36' W., 56.10 feet;

**THENCE**, N. 43°58' W., 95.70 feet;

**THENCE**, N. 57°54' W., 798.60 feet;

**THENCE**, N. 66°31' W., 74.58 feet;

**THENCE**, N. 66°31' W., 88.44 feet;

**THENCE**, N. 26°22' W., 32.34 feet;

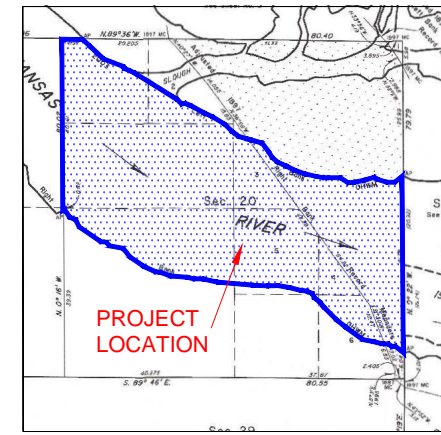
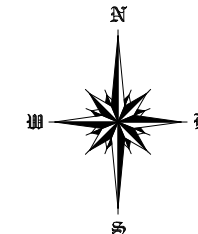
**THENCE**, N. 69°22' W., 331.98 feet;

**THENCE**, N. 46°58' W., 306.24 feet;

**THENCE**, N. 45°25' W., 141.24 feet to the angle point of sections 17 and 20 at the digitized 2003 left bank ordinary high-water mark;

**THENCE**, N. 89°36' W., along the line between sections 17 and 20, 328.02 feet to the corner of sections 17, 18, 19, and 20;

**THENCE**, S. 00°16' E., along the line between sections 19, and 20, 2681.58 feet to the angle point of sections 19 and 20 at the digitized 2003 right bank ordinary high-water mark, downstream along said mark in section 20;



LOCATION MAP

**SURVEYOR'S SPECIAL NOTE:**  
1. MEANING AND INTENDING TO DESCRIBE THE PARCEL DERIVED FROM THE OFFICIAL BUREAU OF LAND MANAGEMENT PLATS AND FIELDNOTES OF THE DEPENDENT RESURVEY AND SURVEY OF THE ARKANSAS RIVER BED APPROVED JULY 22, 2011. THE PURPOSE OF THIS DESCRIPTION IS TO DESCRIBE THE WET BED AREAS AS SHOWN ON THE PLAT. THIS IS EXCLUSIVELY FOR USE BY THE ARKANSAS RIVERBED AUTHORITY AND THE CHOCTAW, CHICKASAW AND CHEROKEE NATIONS OF OKLAHOMA. ACCURACY AND ACREAGES DEFINED BY THE ORIGINAL SURVEY DOCUMENTATION.

2. THIS IS NOT A BOUNDARY SURVEY AND IS NOT INTENDED TO BE USED AS A BOUNDARY SURVEY. NO FIELD WORK HAS BEEN DONE AND NO MONUMENTS HAVE BEEN VERIFIED.

**LEGEND**  
These standard symbols may be found in the drawing.

— CALCULATED AREA LIMITS  
▲ CALCULATED CORNER

0' 1000' 2000'



**LEGAL DESCRIPTION:**

A parcel of land situated in section 20 of township 11 north, range 22 east, Indian Meridian, Haskell and Sequoyah County, Oklahoma, and being more particularly described as follows:

**BEGINNING** at the angle point of sections 20 and 21, at the digitized 2003 left bank ordinary high-water mark, upstream along said mark in section 20;

**THENCE**, upstream along aforesaid mark, S. 50°59' W., 146.52 feet;

**THENCE**, S. 88°55' W., 125.40 feet;

**THENCE**, N. 72°39' W., 143.22 feet;

**THENCE**, N. 57°24' W., 72.60 feet;

**THENCE**, S. 73°12' W., 166.98 feet;

**THENCE**, S. 77°36' W., 153.78 feet;

**THENCE**, S. 85°54' W., 95.70 feet;

**THENCE**, N. 57°24' W., 145.20 feet;

**THENCE**, N. 89°32' W., 186.12 feet;

**THENCE**, S. 88°55' W., 80.52 feet;

**THENCE**, N. 78°49' W., 118.14 feet;

**THENCE**, N. 77°51' W., 175.56 feet;

**THENCE**, N. 70°32' W., 171.60 feet;

**THENCE**, N. 62°47' W., 148.50 feet;

**THENCE**, N. 65°23' W., 150.48 feet;

**THENCE**, N. 49°54' W., 106.92 feet;

**THENCE**, N. 31°10' W., 110.22 feet;

**THENCE**, N. 37°37' W., 168.96 feet;

**THENCE**, N. 74°42' W., 178.20 feet;

**THENCE**, N. 73°59' W., 74.58 feet to the Adjusted 1887 Right Bank Record Meanders;

**THENCE**, N. 73°59' W., 130.68 feet;

**THENCE**, N. 50°59' W., 124.74 feet;

**THENCE**, N. 46°05' W., 163.68 feet;

**THENCE**, N. 58°49' W., 225.72 feet;

**THENCE**, N. 65°27' W., 139.26 feet;

**THENCE**, N. 61°21' W., 242.88 feet;

**THENCE**, N. 68°43' W., 92.40 feet;

**THENCE**, S. 78°36' W., 56.10 feet;

**THENCE**, N. 43°58' W., 95.70 feet;

**THENCE**, N. 57°54' W., 798.60 feet;

**THENCE**, N. 66°31' W., 74.58 feet;

**THENCE**, N. 66°31' W., 88.44 feet;

**THENCE**, N. 26°22' W., 32.34 feet;

**THENCE**, N. 69°22' W., 331.98 feet;

**THENCE**, N. 46°58' W., 306.24 feet;

**THENCE**, N. 45°25' W., 141.24 feet to the angle point of sections 17 and 20 at the the digitized 2003 left bank ordinary high-water mark;

**THENCE**, N. 89°36' W., along the line between sections 17 and 20, 328.02 feet to the corner of sections 17, 18, 19, and 20;

**THENCE**, S. 00°16' E., along the line between sections 19, and 20, 2681.58 feet to the angle point of sections 19 and 20 at the digitized 2003 right bank ordinary high-water mark, downstream along said mark in section 20;

THENCE, downstream along aforesaid mark, N. 67°00' E., 33.66;

THENCE, S 32°42' E., 134.64 feet;

THENCE, S 67°21' E., 105.60 feet;

THENCE, S 25°23' E., 120.78 feet;

THENCE, S 55°19' E., 416.46 feet;

THENCE, S 86°13' E., 90.42 feet;

THENCE, S 33°01' E., 67.32 feet;

THENCE, S 79°33' E., 224.40 feet;

THENCE, S 39°13' E., 172.26 feet;

THENCE, S 55°30' E., 264.66 feet;

THENCE, S 64°56' E., 198.66 feet;

THENCE, S 82°57' E., 84.14 feet;

THENCE, S 69°58' E., 161.04 feet;

THENCE, S 86°04' E., 254.76 feet;

THENCE, S 76°14' E., 121.44 feet;

THENCE, N 89°13' E., 130.02 feet;

THENCE, S 77°48' E., 230.34 feet;

THENCE, S 84°43' E., 572.88 feet;

THENCE, S 87°53' E., 227.70 feet;

THENCE, N 87°33' E., 153.78 feet;

THENCE, S 80°04' E., 180.18 feet;

THENCE, S 75°10' E., 182.82 feet;

THENCE, S 85°02' E., 98.34 feet;

THENCE, S 65°46' E., 95.04 feet;

THENCE, S 25°16' E., 72.60 feet;

THENCE, S 51°48' E., 112.20 feet;

THENCE, S 37°22' E., 104.28 feet;

THENCE, S 45°11' E., 281.82 feet;

THENCE, S 51°19' E., 170.94 feet;

THENCE, S 53°52' E., 333.96 feet;

THENCE, S 78°58' E., 172.92 feet;

THENCE, S 74°32' E., 121.44 feet;

THENCE, S 89°24' E., 50.16 feet to the Adjusted 1887 Left Bank Record Meanders;

THENCE, S 89°24' E., 63.36 feet;

THENCE, S 51°58' E., 72.60 feet;

THENCE, N 81°50' E., 56.76 feet;

THENCE, S 51°39' E., 158.40 feet to the angle point of sections 20 and 21 at the the digitized 2003 right bank ordinary high-water mark ;

THENCE, N 0°22' W., along the section line between sections 20 and 21 , 2757.48 feet to the **POINT OF BEGINNING** , containing +/- 305.71 acres.

**BASIS OF BEARINGS:** As shown on the official BLM plat, approved July 22, 2011, referenced to the true meridian.

Meaning and intending to describe the parcel derived from the Official Bureau of Land Management plats and field notes of the Dependent Resurvey and Survey of the Arkansas River Bed approved July 22, 2011. The purpose of this description is to describe the wet bed areas as shown on the plat. This is exclusively for use by the Arkansas Riverbed Authority and the Choctaw, Chickasaw and Cherokee Nations of Oklahoma. Accuracy and acreages defined by the original survey documentation.

**Note:** See Exhibit "A" enlargement of the official Bureau of Land Management Plat attached.

*David L. Page*  
DAVID L. PAGE, JR. P.L.S. #1566

4-30-21  
DATE SIGNED





# EXHIBIT "A"

~BASIS OF BEARING~  
As shown on the official BLM plat, approved July 22, 2011, referenced to the true meridian.

# LEGAL DESCRIPTION EXHIBIT

SECTION 19, TOWNSHIP 11 NORTH, RANGE 22 EAST  
HASKELL AND SEQUOYAH COUNTY, STATE OF OKLAHOMA.



124 SOUTH 8th AVENUE  
DURANT, OKLAHOMA 74701  
(580) 920-9101 OR (580) 239-0176  
FAX (580) 920-9121

DAVID L. PAGE JR. © 2020  
PROFESSIONAL LAND SURVEYOR #1566  
C.A. # 1991, EXPIRES 6-30-2021

Surveyor's Seal



4-30-21  
DATE SIGNED

*David L. Page*  
DAVID L. PAGE, JR. P.L.S. #1566

LOCATION  
SECTION 20  
TOWNSHIP 11 NORTH, RANGE 22 EAST  
HASKELL COUNTY

**GENERAL NOTES**  
SUBJECT TO EASEMENTS AND/OR RIGHTS-OF-WAY, EITHER RECORDED, OR IMPLIED, THEREOF.  
NO UTILITIES OF ANY KIND HAVE BEEN LOCATED EXCEPT THOSE SHOWN ON THE ABOVE PLAT  
CONTROLLING CORNERS FOR THIS LEGAL DESCRIPTION ARE AS INDICATED ON THE LOCATION MAP  
THIS IS NOT A VALID LEGAL DESCRIPTION WITHOUT THE SURVEYORS ORIGINAL SIGNATURE AND ORIGINAL SEAL  
PORTIONS OF THIS PLAT ARE IN COLOR, PHOTO AND ELECTRONIC COPIES OF THIS PLAT MAKE IT INVALID AND MAY ALTER ITS MEANING  
THIS EXHIBIT AND LEGAL DESCRIPTION MEETS THE OKLAHOMA MINIMUM STANDARDS FOR THE PRACTICE OF LAND SURVEYING AS ADOPTED BY THE OKLAHOMA STATE BOARD OF LICENSURE FOR PROFESSIONAL ENGINEERS AND LAND SURVEYORS.

NO.	REVISION/ISSUE	DATE

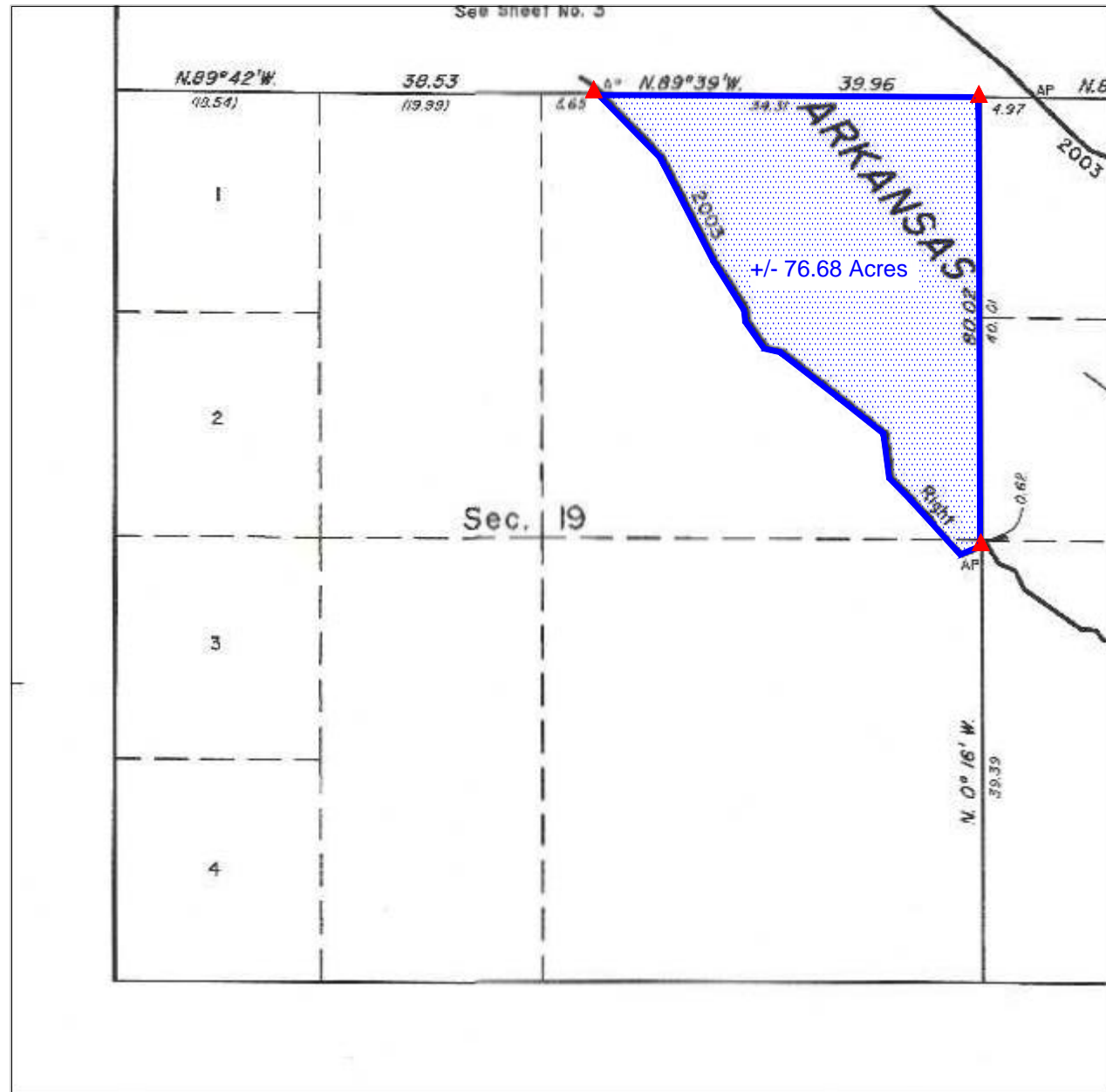
SURVEY INFORMATION	
FIELD WORK PERFORMED:	NONE
DATE OF LAST SITE VISIT:	NONE
EXHIBIT COMPLETED:	4-30-21

Project Name and Address  
ARKANSAS RIVER EXHIBIT  
SECTION 20, TOWNSHIP 11 NORTH, RANGE 22 EAST  
HASKELL AND SEQUOYAH COUNTY, STATE OF OKLAHOMA.

SCALE 1" = 1000'

SHEET NO. 1 OF 1

DATE 7-30-20



**LEGAL DESCRIPTION:**

A parcel of land situated in section 19 of township 11 north, range 22 east, Indian Meridian, Haskell and Sequoyah County, Oklahoma, and being more particularly described as follows:

**BEGINNING** at the angle point of sections 19 and 20, at the digitized 2003 right bank ordinary high-water mark, upstream along said mark in section 19;

**THENCE**, upstream along aforesaid mark, S. 67°00' W., 128.70 feet;

**THENCE**, N. 42°12' W., 444.18 feet;

**THENCE**, N. 44°32' W., 178.20 feet;

**THENCE**, N. 07°39' W., 269.28 feet;

**THENCE**, N. 51°27' W., 353.10 feet;

**THENCE**, N. 52°01' W., 432.30 feet;

**THENCE**, N. 77°14' W., 97.02 feet;

**THENCE**, N. 35°05' W., 196.02 feet;

**THENCE**, N. 06°14' W., 68.64 feet;

**THENCE**, N. 32°05' W., 347.82 feet;

**THENCE**, N. 27°15' W., 693.00 feet;

**THENCE**, N. 44°15' W., 524.04 feet to the angle point of sections 18 and 19, at the digitized 2003 right bank ordinary high-water mark;

**THENCE**, S. 89°39' E., along the line between sections 18 and 19, 2264.46 feet to the corner of sections 17, 18, 19, and 20;

**THENCE**, S. 00°16' E., along the line between sections 19 and 20, 2681.58 feet to the **POINT OF BEGINNING**, containing +/- 76.68 acres.

**BASIS OF BEARINGS:** As shown on the official BLM plat, approved July 22, 2011, referenced to the true meridian.

Meaning and intending to describe the parcel derived from the Official Bureau of Land Management plats and field notes of the Dependent Resurvey and Survey of the Arkansas River Bed approved July 22, 2011. The purpose of this description is to describe the wet bed areas as shown on the plat. This is exclusively for use by the Arkansas Riverbed Authority and the Choctaw, Chickasaw and Cherokee Nations of Oklahoma. Accuracy and acreages defined by the original survey documentation.

**Note:** See Exhibit "A" enlargement of the official Bureau of Land Management Plat attached.

David L. Page, Jr. (4/30/21)  
LS #1566

**SURVEYOR'S SPECIAL NOTE:**

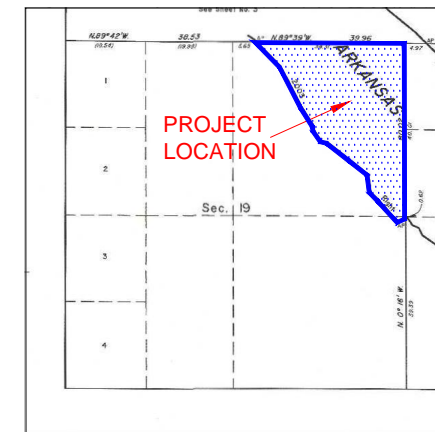
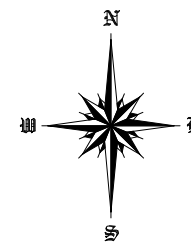
1. MEANING AND INTENDING TO DESCRIBE THE PARCEL DERIVED FROM THE OFFICIAL BUREAU OF LAND MANAGEMENT PLATS AND FIELDNOTES OF THE DEPENDENT RESURVEY AND SURVEY OF THE ARKANSAS RIVER BED APPROVED JULY 22, 2011. THE PURPOSE OF THIS DESCRIPTION IS TO DESCRIBE THE WET BED AREAS AS SHOWN ON THE PLAT. THIS IS EXCLUSIVELY FOR USE BY THE ARKANSAS RIVERBED AUTHORITY AND THE CHOCTAW, CHICKASAW AND CHEROKEE NATIONS OF OKLAHOMA. ACCURACY AND ACREAGES DEFINED BY THE ORIGINAL SURVEY DOCUMENTATION.

2. THIS IS NOT A BOUNDARY SURVEY AND IS NOT INTENDED TO BE USED AS A BOUNDARY SURVEY. NO FIELD WORK HAS BEEN DONE AND NO MONUMENTS HAVE BEEN VERIFIED.

**LEGEND**

These standard symbols may be found in the drawing.

- CALCULATED AREA LIMITS
- CALCULATED CORNER



LOCATION MAP

**LEGAL DESCRIPTION:**

A parcel of land situated in section 19 of township 11 north, range 22 east, Indian Meridian, Haskell and Sequoyah County, Oklahoma, and being more particularly described as follows:

**BEGINNING** at the angle point of sections 19 and 20, at the digitized 2003 right bank ordinary high-water mark, upstream along said mark in section 19;

**THENCE**, upstream along aforesaid mark, S. 67°00' W., 128.70 feet;

**THENCE**, N. 42°12' W., 444.18 feet;

**THENCE**, N. 44°32' W., 178.20 feet;

**THENCE**, N. 07°39' W., 269.28 feet;

**THENCE**, N. 51°27' W., 353.10 feet;

**THENCE**, N. 52°01' W., 432.30 feet;

**THENCE**, N. 77°14' W., 97.02 feet;

**THENCE**, N. 35°05' W., 196.02 feet;

**THENCE**, N. 06°14' W., 68.64 feet;

**THENCE**, N. 32°05' W., 347.82 feet;

**THENCE**, N. 27°15' W., 693.00 feet;

**THENCE**, N. 44°15' W., 524.04 feet to the angle point of sections 18 and 19, at the digitized 2003 right bank ordinary high-water mark;

**THENCE**, S. 89°39' E., along the line between sections 18 and 19, 2264.46 feet to the corner of sections 17, 18, 19, and 20;

**THENCE**, S. 00°16' E., along the line between sections 19 and 20, 2681.58 feet to the **POINT OF BEGINNING**, containing +/- 76.68 acres.

**BASIS OF BEARINGS:** As shown on the official BLM plat, approved July 22, 2011, referenced to the true meridian.

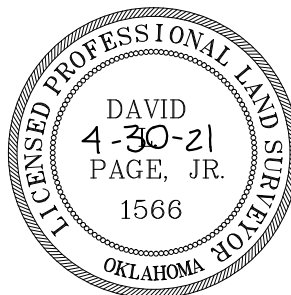
Meaning and intending to describe the parcel derived from the Official Bureau of Land Management plats and field notes of the Dependent Resurvey and Survey of the Arkansas River Bed approved July 22, 2011. The purpose of this description is to describe the wet bed areas as shown on the plat. This is exclusively for use by the Arkansas Riverbed Authority and the Choctaw, Chickasaw and Cherokee Nations of Oklahoma. Accuracy and acreages defined by the original survey documentation.

**Note:** See Exhibit "A" enlargement of the official Bureau of Land Management Plat attached.

David L. Page, Jr. (4/30/21)  
LS #1566

*David L. Page Jr.*  
\_\_\_\_\_  
DAVID L. PAGE, JR. P.L.S. #1566

4-30-21  
\_\_\_\_\_  
DATE SIGNED



# EXHIBIT "A"

-BASIS OF BEARING-  
As shown on the official BLM plat, approved July 22, 2011, referenced to the true meridian.

# LEGAL DESCRIPTION EXHIBIT

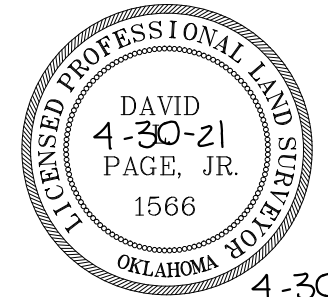
SECTION 17, TOWNSHIP 11 NORTH, RANGE 22 EAST  
HASKELL AND SEQUOYAH COUNTY, STATE OF OKLAHOMA.



124 SOUTH 8th AVENUE  
DURANT, OKLAHOMA 74701  
(580) 920-9101 OR (580) 239-0176  
FAX (580) 920-9121

DAVID L. PAGE JR. © 2020  
PROFESSIONAL LAND SURVEYOR #1566  
C.A. # 1991, EXPIRES 6-30-2021

Surveyor's Seal



4-30-21  
DATE SIGNED

*David L. Page*  
DAVID L. PAGE, JR. P.L.S. #1566

LOCATION  
SECTION 17  
TOWNSHIP 11 NORTH, RANGE 22 EAST  
SEQUOYAH COUNTY

**GENERAL NOTES**  
SUBJECT TO EASEMENTS AND/OR RIGHTS-OF-WAY, EITHER RECORDED, OR IMPLIED, THEREOF.  
NO UTILITIES OF ANY KIND HAVE BEEN LOCATED EXCEPT THOSE SHOWN ON THE ABOVE PLAT  
CONTROLLING CORNERS FOR THIS LEGAL DESCRIPTION ARE AS INDICATED ON THE LOCATION MAP  
THIS IS NOT A VALID LEGAL DESCRIPTION WITHOUT THE SURVEYORS ORIGINAL SIGNATURE AND ORIGINAL SEAL  
PORTIONS OF THIS PLAT ARE IN COLOR, PHOTO AND ELECTRONIC COPIES OF THIS PLAT MAKE IT INVALID AND MAY ALTER ITS MEANING  
THIS EXHIBIT AND LEGAL DESCRIPTION MEETS THE OKLAHOMA MINIMUM STANDARDS FOR THE PRACTICE OF LAND SURVEYING AS ADOPTED BY THE OKLAHOMA STATE BOARD OF LICENSURE FOR PROFESSIONAL ENGINEERS AND LAND SURVEYORS.

NO.	REVISION/ISSUE	DATE

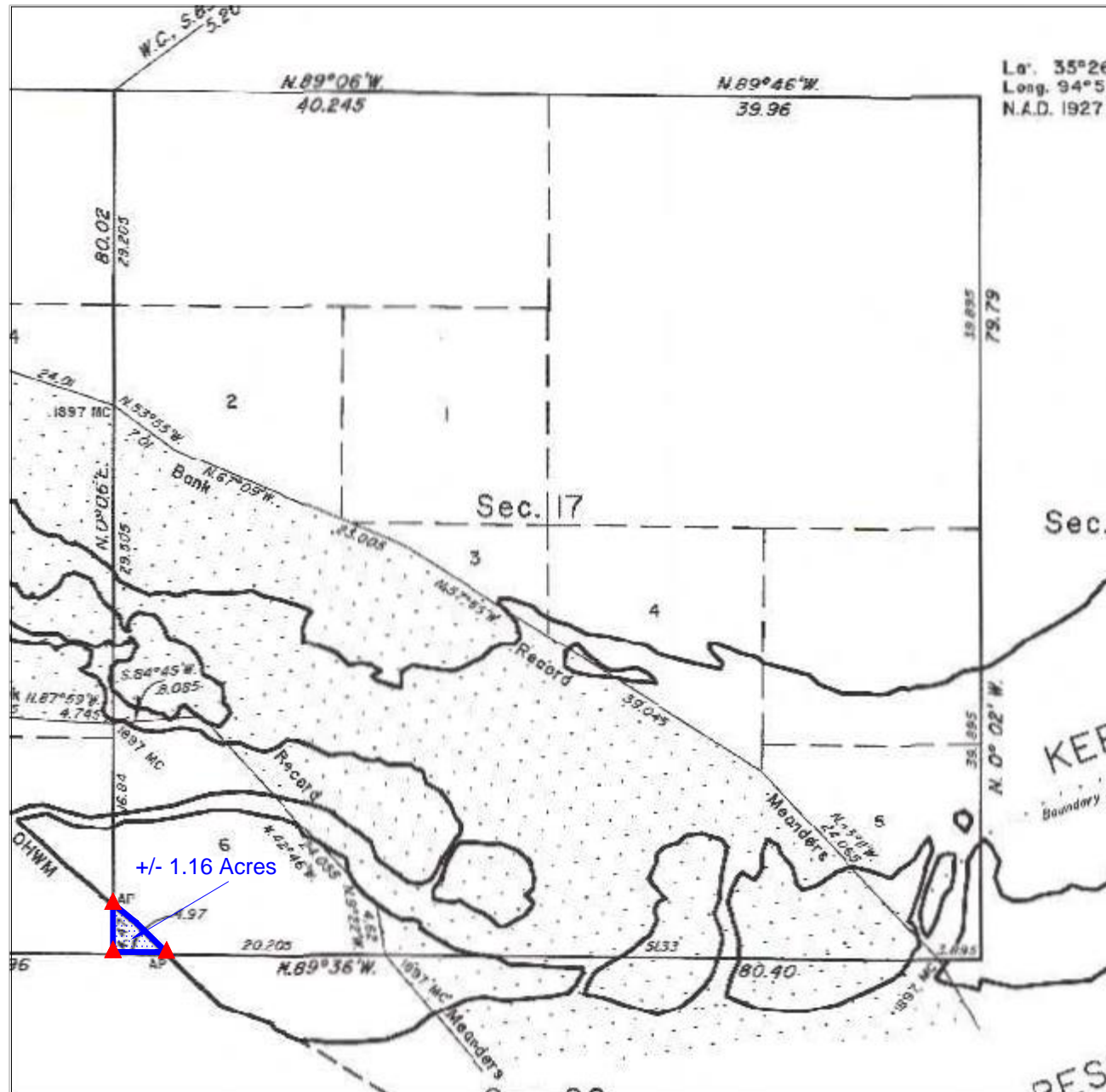
SURVEY INFORMATION	
FIELD WORK PERFORMED:	NONE
DATE OF LAST SITE VISIT:	NONE
EXHIBIT COMPLETED:	4-30-21

Project Name and Address  
ARKANSAS RIVER EXHIBIT  
SECTION 17, TOWNSHIP 11 NORTH, RANGE 22 EAST  
HASKELL AND SEQUOYAH COUNTY, STATE OF OKLAHOMA.

SCALE 1" = 1000'

SHEET NO. 1 OF 1

DATE 4-30-21



### LEGAL DESCRIPTION:

A parcel of land situated in section 17 of township 11 north, range 22 east, Indian Meridian, Haskell and Sequoyah County, Oklahoma, and being more particularly described as follows:

**BEGINNING** at the angle point of sections 17 and 20, at the digitized 2003 left bank ordinary high-water mark, upstream along said mark in section 17;

**THENCE**, upstream along aforesaid mark, N. 45°25' W., 256.74 feet;

**THENCE**, N. 50°51' W., 186.12 feet to the angle point of sections 17 and 18 at the the digitized 2003 left bank ordinary high-water mark;

**THENCE**, S. 00°06' W., along the line between sections 17 and 18, 295.02 feet to the corner of sections 17, 18, 19 and 20;

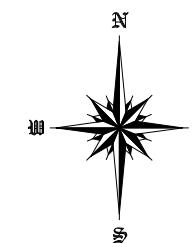
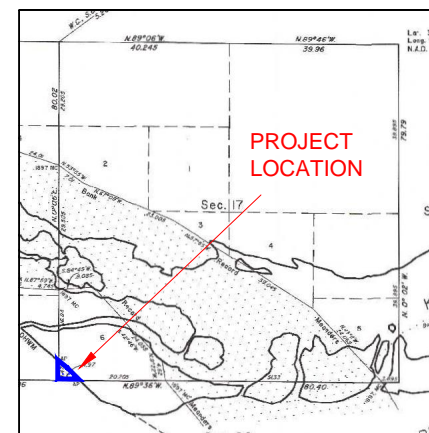
**THENCE**, S. 89°36' E., along the line between sections 17 and 20, 328.02 feet to the **POINT OF BEGINNING**, containing +/- 1.16 acres.

**BASIS OF BEARINGS:** As shown on the official BLM plat, approved July 22, 2011, referenced to the true meridian.

Meaning and intending to describe the parcel derived from the Official Bureau of Land Management plats and field notes of the Dependent Resurvey and Survey of the Arkansas River Bed approved July 22, 2011. The purpose of this description is to describe the wet bed areas as shown on the plat. This is exclusively for use by the Arkansas Riverbed Authority and the Choctaw, Chickasaw and Cherokee Nations of Oklahoma. Accuracy and acreages defined by the original survey documentation.

**Note:** See Exhibit "A" enlargement of the official Bureau of Land Management Plat attached.

David L. Page, Jr. (4/30/21)  
LS #1566



### LEGEND

These standard symbols may be found in the drawing.

- CALCULATED AREA LIMITS
- ▲ CALCULATED CORNER



### SURVEYOR'S SPECIAL NOTE:

1. MEANING AND INTENDING TO DESCRIBE THE PARCEL DERIVED FROM THE OFFICIAL BUREAU OF LAND MANAGEMENT PLATS AND FIELDNOTES OF THE DEPENDENT RESURVEY AND SURVEY OF THE ARKANSAS RIVER BED APPROVED JULY 22,2011. THE PURPOSE OF THIS DESCRIPTION IS TO DESCRIBE THE WET BED AREAS AS SHOWN ON THE PLAT. THIS IS EXCLUSIVELY FOR USE BY THE ARKANSAS RIVERBED AUTHORITY AND THE CHOCTAW, CHICKASAW AND CHEROKEE NATIONS OF OKLAHOMA. ACCURACY AND ACREAGES DEFINED BY THE ORIGINAL SURVEY DOCUMENTATION.

2. THIS IS NOT A BOUNDARY SURVEY AND IS NOT INTENDED TO BE USED AS A BOUNDARY SURVEY. NO FIELD WORK HAS BEEN DONE AND NO MONUMENTS HAVE BEEN VERIFIED.

**LEGAL DESCRIPTION:**

A parcel of land situated in section 17 of township 11 north, range 22 east, Indian Meridian, Haskell and Sequoyah County, Oklahoma, and being more particularly described as follows:

**BEGINNING** at the angle point of sections 17 and 20, at the digitized 2003 left bank ordinary high-water mark, upstream along said mark in section 17;

**THENCE**, upstream along aforesaid mark, N. 45°25' W., 256.74 feet;

**THENCE**, N. 50°51' W., 186.12 feet to the angle point of sections 17 and 18 at the digitized 2003 left bank ordinary high-water mark;

**THENCE**, S. 00°06' W., along the line between sections 17 and 18, 295.02 feet to the corner of sections 17, 18, 19 and 20;

**THENCE**, S. 89°36' E., along the line between sections 17 and 20, 328.02 feet to the **POINT OF BEGINNING**, containing +/- 1.16 acres.

**BASIS OF BEARINGS:** As shown on the official BLM plat, approved July 22, 2011, referenced to the true meridian.

Meaning and intending to describe the parcel derived from the Official Bureau of Land Management plats and field notes of the Dependent Resurvey and Survey of the Arkansas River Bed approved July 22, 2011. The purpose of this description is to describe the wet bed areas as shown on the plat. This is exclusively for use by the Arkansas Riverbed Authority and the Choctaw, Chickasaw and Cherokee Nations of Oklahoma. Accuracy and acreages defined by the original survey documentation.

**Note:** See Exhibit "A" enlargement of the official Bureau of Land Management Plat attached.

David L. Page, Jr. (4/30/21)  
LS #1566

*David L. Page Jr.*  
\_\_\_\_\_  
DAVID L. PAGE, JR. P.L.S. #1566

4-30-21  
DATE SIGNED

