

# TOWNSHIP 10 NORTH, RANGE 24 EAST, OF THE INDIAN MERIDIAN, OKLAHOMA

## DEPENDENT RESURVEY AND SURVEY

A history of surveys and additional information are contained in the field notes.

This plat, in four sheets, representing the dependent resurvey of a portion of the subdivisional lines, and the adjusted record meanders of the 1897 right and left banks of the Arkansas River, designed to restore the corners in their true original locations according to the best available evidence, the informative traverse of the 2003 right and left banks ordinary high water mark (OHWM) of the Arkansas River, as digitized from aerial photography (identifying said riverbed as instructed by Public Law No. 107-331, enacted December 13, 2002), and the informative survey of the boundary of the historic riverbed of the Arkansas River, Township 10 North, Range 24 East, Indian Meridian, Oklahoma.

Except as indicated hereon, the lottings and areas are as shown on the plat approved November 1, 1898.

Survey executed by Mark L. Bush, Supervisory Cadastral Surveyor, beginning August 7, 1989 and completed February 3, 1993, pursuant to Special Instructions dated June 23, 1989, and Supplemental Special Instructions dated July 5, 1989, January 22, 1990 and February 26, 1990 for Group No. 61, Oklahoma.

Bearings and distances depicted in parentheses on certain lines represents calculated data. The intersections of the 2003 digitized banks with surveyed lines were not verified by a field survey.

### DISCLAIMER WITH EXCLUSION

This disclaimer, as set forth in Public Law No. 107-331, Sec 603, dated December 13, 2002, provides: "...that the Indian Nations are forever disclaiming any right, title, or interest in the Disclaimed Drybed Lands, which are contiguous to the channel of the Arkansas River as of the date of the enactment of this title in certain townships in eastern Oklahoma". Sec. 604, of said title, lists the affected townships and defines the term "Drybed Lands". Sec. 605(b)(2)(A), of said title, provides: "Notwithstanding any provision of this title, the Indian Nations do not relinquish any right, title, or interest in any lands which constitute the Wetbed Lands subject to the navigational servitude exercised by the United States on the Wetbed Lands." Sec. 604, defines "Wetbed Lands as ...those Riverbed Lands which lie below the mean high water mark of the Arkansas River...".

UNITED STATES DEPARTMENT OF THE INTERIOR  
BUREAU OF LAND MANAGEMENT

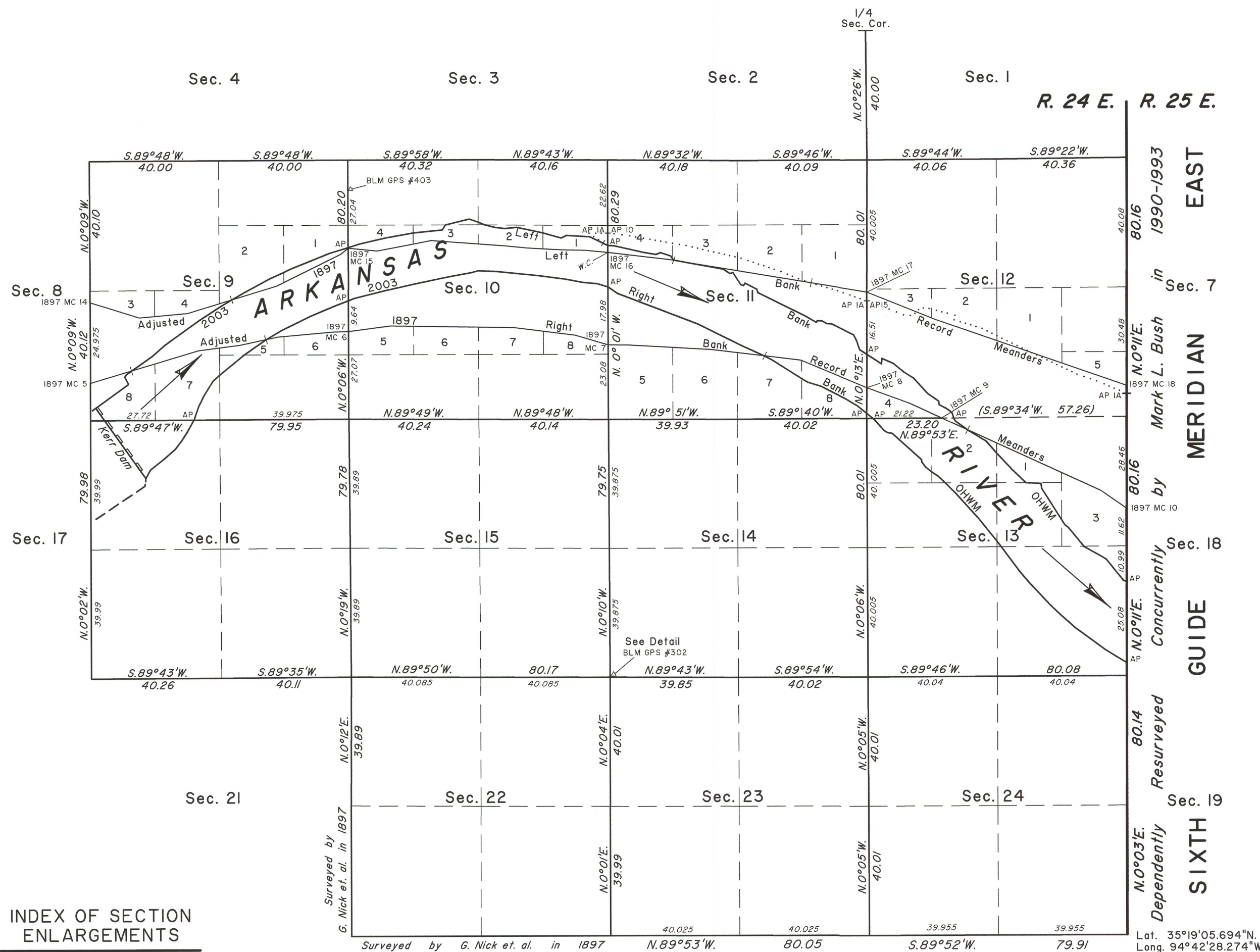
Santa Fe, New Mexico July 22, 2010

This plat is strictly conformable to the approved field notes, and the survey, having been correctly executed in accordance with the requirements of law and the regulations of this Bureau, is hereby accepted.

For the Director



Chief Cadastral Surveyor for New Mexico

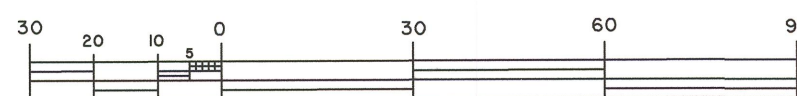
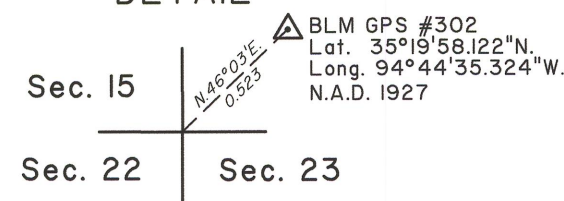


### INDEX OF SECTION ENLARGEMENTS

- SECTION 9 See Sheet No. 2
- SECTION 10 See Sheet No. 3
- SECTION 11 See Sheet No. 3
- SECTION 12 See Sheet No. 4
- SECTION 13 See Sheet No. 4
- SECTION 16 See Sheet No. 2

Boundary of Historic Riverbed .....

### DETAIL



Scale in Chains